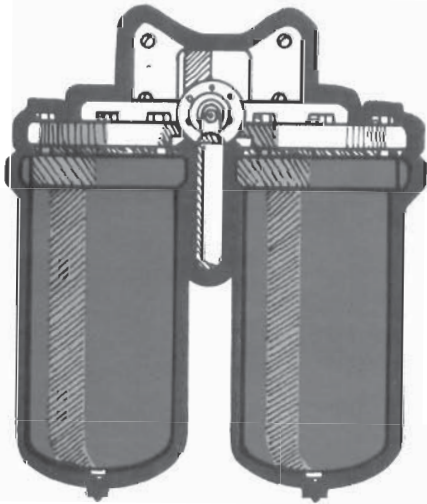




NUGENT

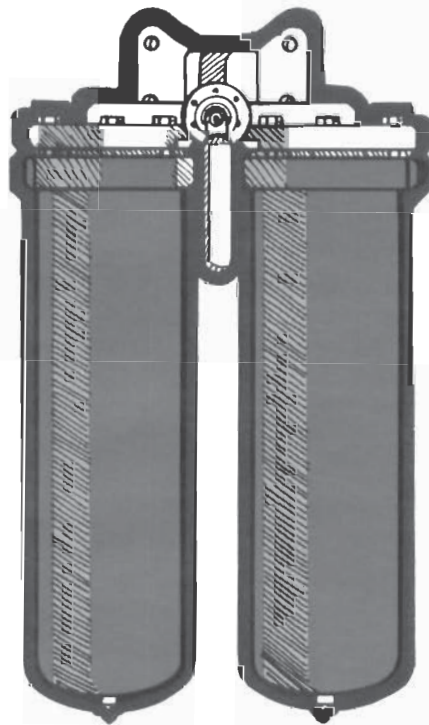
ECONOMY DUPLEX FILTERS

SERIES 1577 Pleated Paper Filters
Ideal for 5 to 50 GPM



5-10 GPM

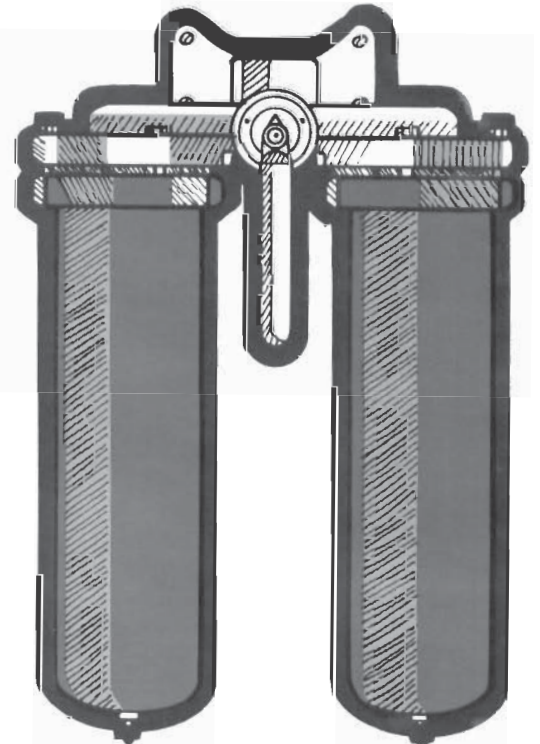
N COMPACT



10-20 GPM

N COST
EFFECTIVE

N EFFICIENT



20-50 GPM

BULLETIN 7H-2

NUGENT Series 1577 Eco

These compact duplex filters are designed for positive removal of solid contaminants from pressure liquid systems. The duplex filters provide continuous filtration and uninterrupted flow when either element is being replaced. The one piece cover contains a straight bore transfer valve with "O" ring seals. 180° movement of valve handle diverts flow from one shell to the other. The valve can be positioned to utilize both elements simultaneously but this defeats the purpose of the duplex feature and is intended only for emergency service. An arrow cast onto the handle indicates which filter is in use.

Each filter shell contains one disposable element.

A mounting bracket is part of the one-piece cast cover. The duplex filters are designed for operating pressures up to 300 psig.

All filters are shipped with elements, replacement parts list, dimensional drawing and operation manual.

Specifications

Standard Materials:

Cover	Cast Iron (Optional Cast Steel for API Specifications.)
Shell	Drawn Carbon Steel
Valve Rotor (Plug)	Ductile Iron (Optional Stainless Steel)
Finish	Textured Enamel Gray
Cover Seal	Non Asbestos

Design Parameters:

Design Pressure	200 PSIG – 300 PSIG
Test Pressure	300 PSIG – 450 PSIG
Design Temperature	250° continuous (275°F intermittent)

Recommended Differential Pressure when clean 5 PSID Max.

Recommended Differential Pressure for element change 20 PSID

Differential Pressure Relief Valve (1R & 1S only) 22 PSID

Minimum Element Collapse Differential Pressure 100 PSID

Element Flow Direction outside-in

Standard Connections:

Inlet-Outlet	1", 1¼", 1½" NPT
Drain/Vent	1/8" NPT

Options

- Pressure Gauge Connections
- Inlet-Outlet ANSI B16.5 Flange Connections
- 1/4" Crossover Fill Line
- Cast Steel Cover
- Stainless Steel Rotor (Plug)
- ASME "U" Stamp (Size 1SS only)

Additional Specifications on page 4

SIZE
1R



5-10 GPM

SIZE
1S



10-20 GPM

SIZE
1SS

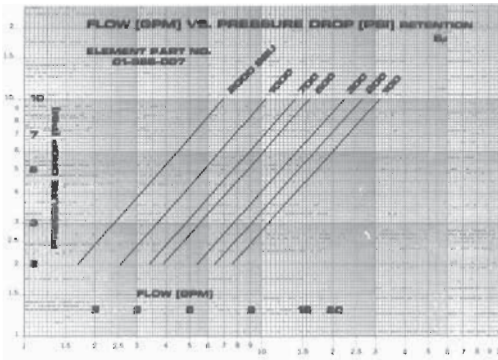


20-50 GPM

Thermal Products Duplex Liquid Filters

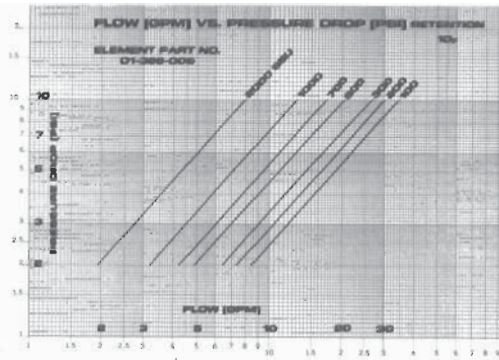


5 MICRON



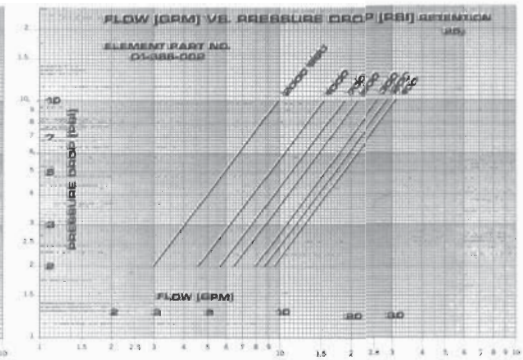
1577 - 1RH - DN* - RA5
1577 - 1RH - DY* - RA5

10 MICRON



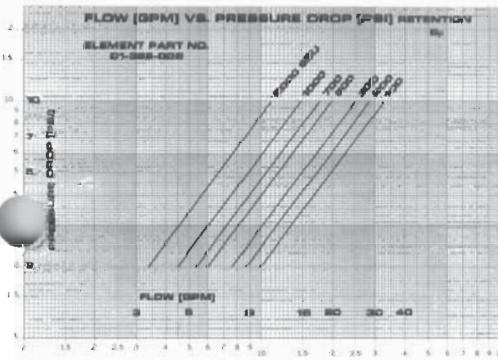
1577 - 1RH - DN* - RA10
1577 - 1RH - DY* - RA10

25 MICRON



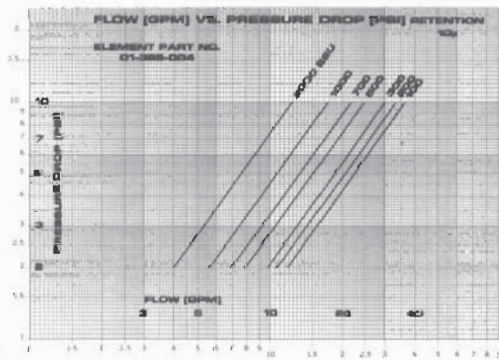
1577 - 1RH - DN* - RA25
1577 - 1RH - DY* - RA25

5 MICRON



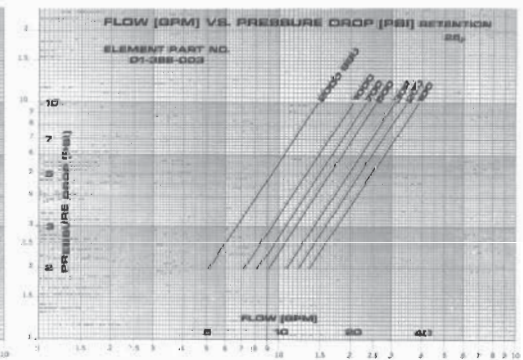
1577 - 1SH - DN* - RB5
1577 - 1SH - DY* - RB5

10 MICRON



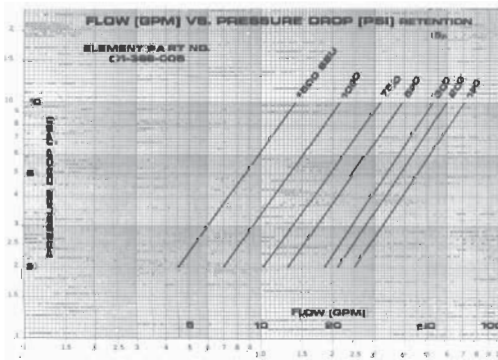
1577 - 1SH - DN* - RB10
1577 - 1SH - DY* - RB10

25 MICRON



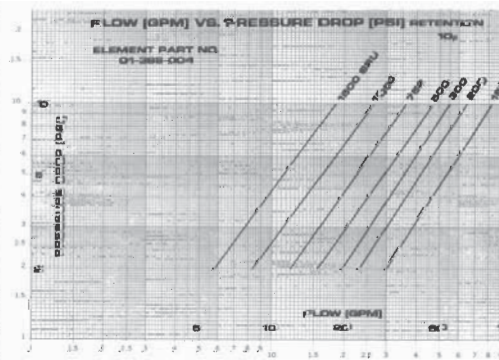
1577 - 1SH - DN* - RB25
1577 - 1SH - DY* - RB25

5 MICRON



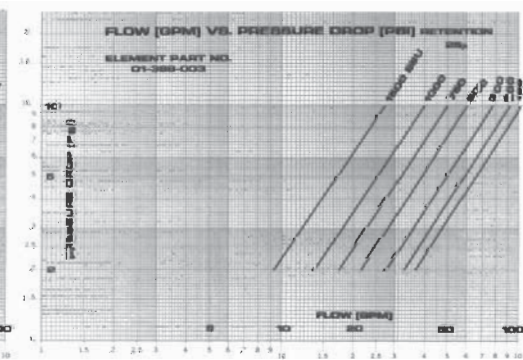
1577 - 1SSH - DN* - RB5

10 MICRON



1577 - 1SSH - DN* - RB10

25 MICRON



1577 - 1SSH - DN* - RB25

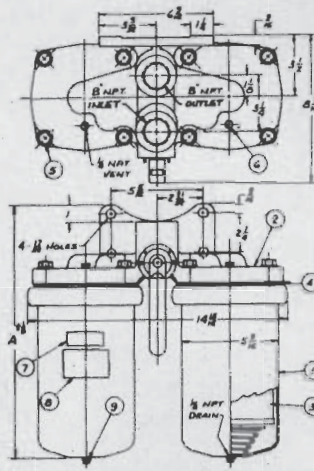
Size 1SS available with ASME Code "U" and "UM" Stamp.

N* = without internal differential pressure relief valve
Y* = includes internal differential pressure relief valve

SIZE 1R

Dimensions (inches)

"A" Length	15 ¹¹ / ₁₆ "
(Add 1" to remove element)	
Width	14 ¹⁵ / ₁₆ "
Depth	8 ⁷ / ₁₆ "
Approx. Weight Empty	45
Approx. Weight Full	55
Approx. Initial Fill	6 Qts.



Replacement Parts

Shell Assembly	22-002-202
Cover & Valve Assbl'y (Cast Iron)	33-018-204*
Cover & Valve Assbl'y (Cast Steel)	33-018-243*
Cover Seal	01-047-009
Valve "O" Rings (1 required)	01-061-003
Valve "O" Rings (2 required)	01-061-007
Valve Rotor (Ductile Iron)	33-020-001
Valve Rotor (Stainless Steel)	33-020-003
Valve Handle	33-019-002

Cartridge Assembly 33-229

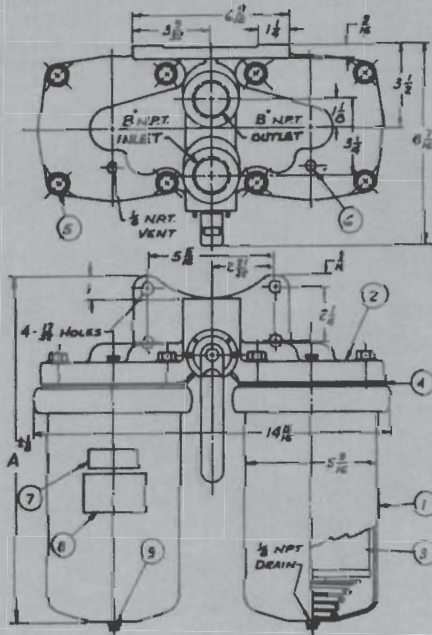
Including	
Spring Plate	33-034-208
Gasket	01-047-026
"O" Ring	01-061-016
Tube	33-032-003
Spool (Relief Valve)	33-029-201
Spool (No Relief Valve)	33-030-201
Ring	01-058-004
Plus Elements	
01-388-007 or 006 or 002	

*Specify connection size

SIZE 1S

Dimensions (inches)

"A" Length	24 ¹⁵ / ₁₆ "
(Add 1" to remove element)	
Width	14 ¹⁵ / ₁₆ "
Depth	8 ⁷ / ₁₆ "
Approx. Weight Empty	60
Approx. Weight Full	72
Approx. Initial Fill	8 Qts.



Replacement Parts

Shell Assembly	22-002-203
Cover & Valve Assbl'y (Cast Iron)	33-018-204*
Cover & Valve Assbl'y (Cast Steel)	33-018-243*
Cover Seal	01-047-009
Valve "O" Rings (1 required)	01-061-003
Valve "O" Rings (2 required)	01-061-007
Valve Rotor (Ductile Iron)	33-020-001
Valve Rotor (Stainless Steel)	33-020-003
Valve Handle	33-019-002

Cartridge Assembly 33-229

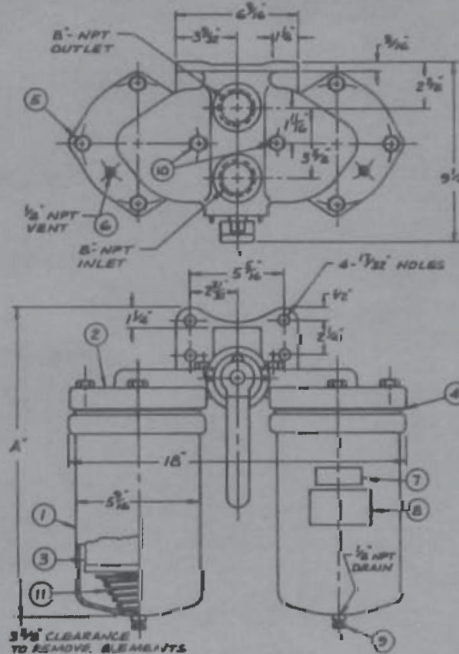
Including	
Spring Plate	33-034-208
Gasket	01-047-026
"O" Ring	01-061-016
Tube	33-032-004
Spool (Relief Valve)	33-029-202
Spool (No Relief Valve)	33-030-202
Ring	01-058-004
Plus Elements	
01-388-005 or 004 or 003	

*Specify connection size

SIZE 1SS

Dimensions (inches)

"A" Length	25 ⁵ / ₈ "
(Add 1" to remove element)	
Width	18"
Depth	9 ¹ / ₄ "
Approx. Weight Empty	60
Approx. Weight Full	90
Approx. Initial Fill	8 Qts.



Replacement Parts

Shell Assembly	22-002-203
Cover & Valve Assbl'y (Cast Iron)	33-252-201*
Cover Seal	01-047-009
Valve "O" Rings (3 required)	01-061-006
Valve Rotor (Ductile Iron)	35-009-004
Valve Rotor (Stainless Steel)	35-009-005
Valve Handle	35-010-001

Cartridge Assembly

(None Required)

Complete Internal Assembly consists of: Spring Plate 33-258-201 plus Elements 01-388-005 or 004 or 003

*Specify connection size

