



**GT**<sup>TM</sup>  
**EXHAUST**



# Accessory Catalog and Specifications



**Silex**  
**INNOVATIONS**



# **THERMAL PRODUCTS** INC.

Engineered Solutions To  
Industrial Applications

# TRUSTED

[www.thermalproducts.com](http://www.thermalproducts.com) / [sales@thermalproducts.com](mailto:sales@thermalproducts.com)

# EMPOWERED

# ENERGIZED

**World Headquarters**  
Stoughton Wisconsin  
United States



1560 Williams Drive  
Stoughton, WI 53589  
Tel: 608-719-1800  
[nelsonglobalproducts.com](http://nelsonglobalproducts.com)

*GT Exhaust and Silex are divisions of Nelson Global Products*

# Accessory Specifications

## Table of Contents

Part	Assembled Accessories	Page
-	Table of Contents	1
-	Corrugated Flex Specifications	2
3ACI-10	Corrugated Flex Connectors	3-6
-	Bellows/Expansion Joint Specifications	7
3ACI-11	Expansion Joint / Bellows	8-11
3ACI-13	Wyes (Cummins)	12
3ACI-14	Wyes (MTU)	13
3ACI-15	Wyes (Caterpillar)	14
3ACI-20-C	Thimbles (Combustible Walls Only)	15
3ACI-20-NC	Thimbles (Roof & Non-Combustible Walls)	15
3ACI-21	Roof Jacks	16
3ACI-22	Rain Caps	17-18
3ACI-23	90° Tube Elbows (Short Rad: Flanged One End)	19
3ACI-24	90° Mitred Elbows (Short Rad: Flanged One End)	19
3ACI-25	Outlet Extensions (Tube: Flanged One End)	20
3ACI-25	Outlet Extensions (Tube: 45° w/ Bird Screen)	20
3ACI-25	Outlet Extensions (Tube: Flanged Both Ends)	21
3ACI-26	90° Tube Elbows (Short Rad: Flanged Both Ends)	21
3ACI-26-M	90° Mitred Elbows (Short Rad: Flanged Both Ends)	21

Part	Stock Accessories	Page
3ACI-27	Pipe Hangers	22
3ACI-28	Brackets	23
3ACI-31	Clamps (Circle)	24
3ACI-32	Clamps (Round Bolt)	24
3ACI-33	Clamps (TruSeal)	24
3ACI-35	Clamps (V-Band)	24
3ACI-36	Flanges (Flared)	25
3ACI-37	Flanges (Machined Turbo)	25
3ACI-38-40	Flanges (Engine)	25
3ACI-41	Flanges (ANSI)	26

Part	Stock Accessories	Page
3ACI-45	Flanges (Threaded Raised)	27
3ACI-46	Flanges (Reducing/Increasing: Pipe & Tube)	27
-	Gasket Specifications	28
3ACI-47	Nut Bolt Gasket Kits	29
3ACI-48	Gaskets	30
3ACI-49	Tube Fittings (Cuffed One End)	31
3ACI-50	Tube Fittings (Cuffed Both Ends)	31
3ACI-51	Tube Fittings (Reducer/Expanders)	31-32
3ACI-52	Tube Fittings (Tube Connectors/Stack Breakers)	32
3ACI-53	90° Tube Elbows (Long Rad.: Cuffed One End)	33
3ACI-54	90° Tube Elbows (Long Rad.: OD Tube Ends)	33
3ACI-55	90° Tube Elbows (Short Rad.: Tangent Cut)	33
3ACI-55-M	90° Mitred Elbows	33
3ACI-56	90° Tube Elbows (Short Rad.: Cuffed One End)	34
3ACI-57	90° Tube Elbows (Short Rad.: OD Tube Ends)	34
3ACI-58	45° Tube Elbows (Long Rad.: Cuffed One End)	34
3ACI-59	45° Tube Elbows (Long Rad.: OD Tube Both Ends)	34
3ACI-60	45° Tube Elbows (Short Rad.: Cuffed One End)	35
3ACI-61	45° Tube Elbows (Short Rad.: OD Tube Both Ends)	35
3ACI-62	45° Tube Elbows (Short Rad.: Tangent Cuts)	35
3ACI-63	Stainless Steel Flex Hose (Interlocking)	36
3ACI-64	Tubing	36
3ACI-65	Stainless Steel Flex Hose (Corrugated)	36
3ACI-67	Cones	37
3ACI-80-81	Rain Guards	38
3ACI-82	Drain Cocks	38
-	Velcro Wrap Specifications	39
3ACI-103	Velcro Wrap (Tubing)	40
3ACI-104	Velcro Wrap (Flex & Bellows)	40
3ACI-105	Velcro Wrap (Elbows)	41
3ACI-106	Velcro Wrap (Flange)	42
Accessory Part Number Assignments and more		43-51

For further information on quotes, please contact a Product Specialist



Silex: 1-800-387-7818  
 Sales/Quote Email: [Silex.Sales@nelsongp.com](mailto:Silex.Sales@nelsongp.com)  
 Order Email: [Silex.Orders@nelsongp.com](mailto:Silex.Orders@nelsongp.com)

[silex.com](http://silex.com)

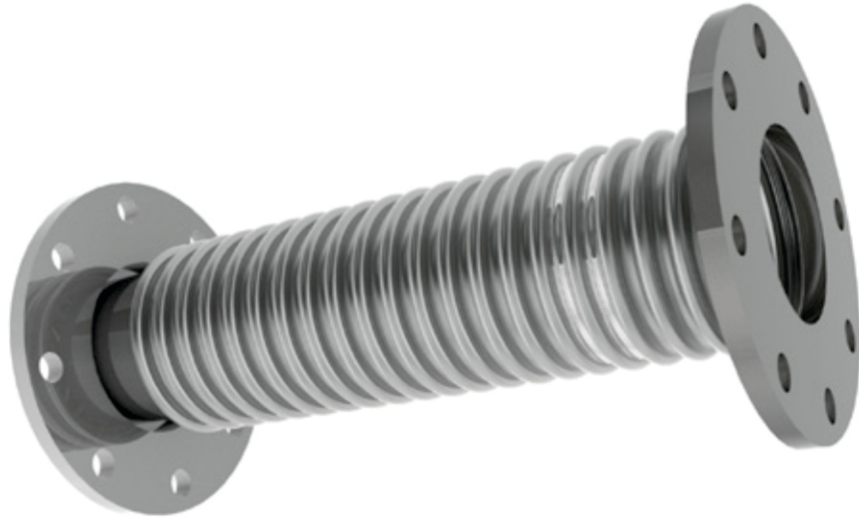
GT Phone: 1-888-894-3726  
 Sales/Quote Email: [GTExhaust.Sales@nelsongp.com](mailto:GTExhaust.Sales@nelsongp.com)  
 Order Email: [GTExhaust.Orders@nelsongp.com](mailto:GTExhaust.Orders@nelsongp.com)

[gtexhaust.com](http://gtexhaust.com)



## 10—Flex Specifications

### Corrugated Flex - Technical Specifications



Nominal Hose ID (in.)	Nominal Hose OD (in.)	Max Lateral Offset / Foot	Max Axial Movement / Foot	Max Operating Temperature (°F)
2	2.75	0.96	0.14	1500°
2.5	3.17	0.82	0.22	1500°
3	3.75	0.74	0.22	1500°
4	4.82	0.60	0.22	1500°
5	5.87	0.47	0.22	1500°
6	6.94	0.42	0.22	1500°
8	9	0.30	0.22	1500°
10	11	0.20	0.22	1500°
12	13	0.17	0.22	1500°

**World Headquarters**  
Stoughton Wisconsin  
United States



1560 Williams Drive  
Stoughton, WI 53589  
Tel: 608-719-1800  
nelsonglobalproducts.com

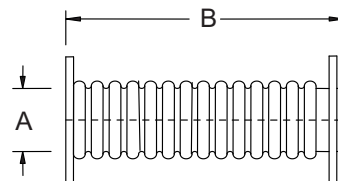
*GT Exhaust and Silex are divisions of Nelson Global Products*

# 10—Flex Connectors

## Corrugated Flex Connectors

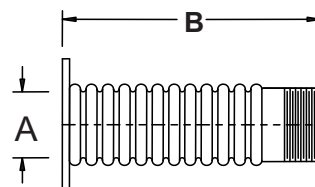
### Floating ANSI Flange / ANSI Flange

Part Number	A	B	WT
3ACI-10-1F1-3518	3.5	18	18
3ACI-10-1F1-418	4	18	20
3ACI-10-1F1-518	5	18	24
3ACI-10-1F1-618	6	18	28
3ACI-10-1F1-818	8	18	39
3ACI-10-1F1-1018	10	18	51
3ACI-10-1F1-1218	12	18	64



### Male NPT / ANSI Flange

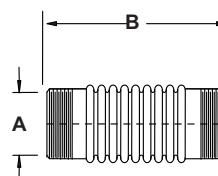
Part Number	A	B	WT
3ACI-10-21-218	2	18	9
3ACI-10-21-2518	2.5	18	10
3ACI-10-21-318	3	18	12
3ACI-10-21-3518	3.5	18	14
3ACI-10-21-418	4	18	16



Threaded pipe nipples may be replaced with plain pipe stubs.

### Male NPT / Male NPT

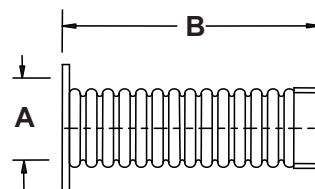
Part Number	A	B	WT
3ACI-10-22-218	2	18	6
3ACI-10-22-2518	2.5	18	6
3ACI-10-22-318	3	18	8
3ACI-10-22-3518	3.5	18	10
3ACI-10-22-418	4	18	11



Threaded pipe nipples may be replaced with plain pipe stubs.

### Female Half Coupling / ANSI Flange

Part Number	A	B	WT
3ACI-10-31-218	2	18	9
3ACI-10-31-2518	2.5	18	10
3ACI-10-31-318	3	18	12
3ACI-10-31-3518	3.5	18	15
3ACI-10-31-418	4	18	16



All dimensions are in inches. All weights are in pounds. Weights are approximate. Larger sizes available. Call Product Specialist for details.

All ANSI flanges may be replaced with a standard Caterpillar, Cummins, or MTU engine flanges.

Flex is 321 stainless steel. End connections are carbon steel. Connections available in stainless steel. Call Product Specialist for details.

[For further information on quotes, please contact a Product Specialist](#)



Silex: 1-800-387-7818  
 Sales/Quote Email: [Silex.Sales@nelsongp.com](mailto:Silex.Sales@nelsongp.com)  
 Order Email: [Silex.Orders@nelsongp.com](mailto:Silex.Orders@nelsongp.com)

[silex.com](http://silex.com)

GT Phone: 1-888-894-3726  
 Sales/Quote Email: [GTExhaust.Sales@nelsongp.com](mailto:GTExhaust.Sales@nelsongp.com)  
 Order Email: [GTExhaust.Orders@nelsongp.com](mailto:GTExhaust.Orders@nelsongp.com)

[gtexhaust.com](http://gtexhaust.com)

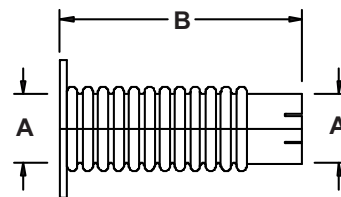


# 10—Flex Connectors

## Corrugated Flex Connectors

### Slotted ID Cuff / ANSI Flange

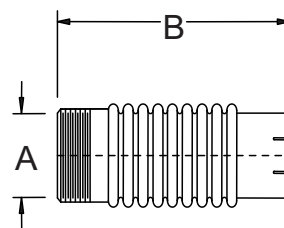
Part Number	A	B	WT
3ACI-10-41-218	2	18	9
3ACI-10-41-2518	2.5	18	10
3ACI-10-41-318	3	18	10
3ACI-10-41-3518	3.5	18	13
3ACI-10-41-418	4	18	14
3ACI-10-41-518	5	18	16
3ACI-10-41-618	6	18	19



### Slotted ID Cuff / Male NPT

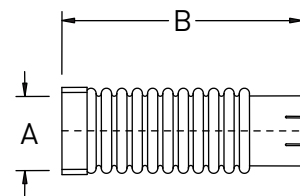
Part Number	A	B	WT
3ACI-10-42-218	2	18	5
3ACI-10-42-2518	2.5	18	6
3ACI-10-42-318	3	18	7
3ACI-10-42-3518	3.5	18	8
3ACI-10-42-418	4	18	9

Threaded pipe nipples may be replaced with plain pipe stubs.



### Slotted ID Cuff / Female Half Coupling

Part Number	A	B	WT
3ACI-10-43-218	2	18	5
3ACI-10-43-2518	2.5	18	6
3ACI-10-43-318	3	18	6
3ACI-10-43-3518	3.5	18	8
3ACI-10-43-418	4	18	9



All dimensions are in inches. All weights are in pounds. Weights are approximate. Other sizes available. Call Product Specialist for details.

All ANSI flanges may be replaced with a standard Caterpillar, Cummins, or MTU engine flanges.

Flex is 321 stainless steel. End connections are carbon steel. Connections available in stainless steel. Call Product Specialist for details.

World Headquarters  
Stoughton Wisconsin  
United States



1560 Williams Drive  
Stoughton, WI 53589  
Tel: 608-719-1800  
nelsonglobalproducts.com

GT Exhaust and Silex are divisions of Nelson Global Products

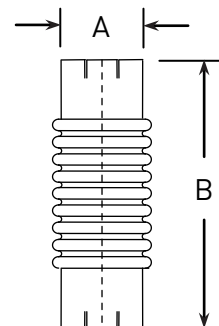
# 10—Flex Connectors

## Corrugated Flex Connectors

### Slotted ID Cuff / Slotted ID Cuff

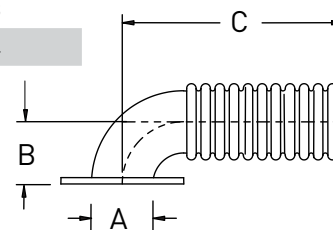
Part Number	A	B	WT
3ACI-10-44-218	2	18	5
3ACI-10-44-2518	2.5	18	5
3ACI-10-44-318	3	18	5
3ACI-10-44-3518	3.5	18	6
3ACI-10-44-418	4	18	7
3ACI-10-44-518	5	18	8
3ACI-10-44-618	6	18	10
3ACI-10-44-818	8	18	12
3ACI-10-44-1018	10	18	17

Tube ends may be substituted.



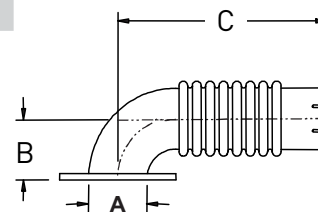
### Floating ANSI Flange / 90° Elbow / Floating ANSI Flange

Part Number	A	B	C	WT
3ACI-10-1F61F-600-B625C18	6	6.25	18	27
3ACI-10-1F61F-800-B10C24	8	10	24	48
3ACI-10-1F61F-1000-B11C24	10	11	24	63
3ACI-10-1F61F-1200-B12C24	12	12	24	84



### Floating ANSI Flange / 90° Elbow / Slotted ID Cuff

Part Number	A	B	C	WT
3ACI-10-1F64-400-B425C18	4	4.25	18	14
3ACI-10-1F64-500-B525C19	5	5.25	19	18
3ACI-10-1F64-600-B625C20	6	6.25	20	22



All dimensions are in inches. All weights are in pounds. Weights are approximate. Larger sizes available. Call Product Specialist for details.

All ANSI flanges may be replaced with a standard Caterpillar, Cummins, or MTU engine flanges.

Flex is 321 stainless steel. End connections are carbon steel. Connections available in stainless steel. Call Product Specialist for details.

[For further information on quotes, please contact a Product Specialist](#)



Silex: 1-800-387-7818  
 Sales/Quote Email: [Silex.Sales@nelsongp.com](mailto:Silex.Sales@nelsongp.com)  
 Order Email: [Silex.Orders@nelsongp.com](mailto:Silex.Orders@nelsongp.com)

[silex.com](http://silex.com)

GT Phone: 1-888-894-3726  
 Sales/Quote Email: [GTExhaust.Sales@nelsongp.com](mailto:GTExhaust.Sales@nelsongp.com)  
 Order Email: [GTExhaust.Orders@nelsongp.com](mailto:GTExhaust.Orders@nelsongp.com)

[gtexhaust.com](http://gtexhaust.com)

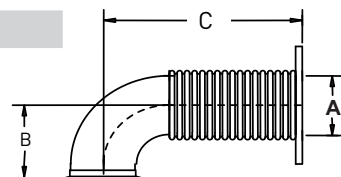


# 10—Flex Connectors

## Corrugated Flex Connectors

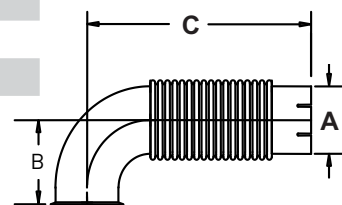
### Flared Flange / 90° Elbow / Floating ANSI Flange

Part Number	A	B	C	WT
3ACI-10-761F-500-B8C23.25	6	8	23.25	19
3ACI-10-761F-600-B9C24.50	8	9	24.50	23



### Flared Flange / 90° Elbow / Slotted ID Cuff

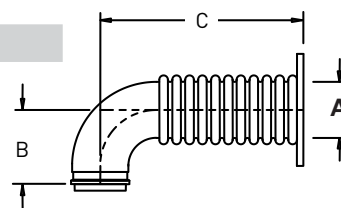
Part Number	A	B	C	WT
3ACI-10-764-350-B5C18	3.5	5	18	7
3ACI-10-764-400-B5.5C18	4	5.5	18	9
3ACI-10-764-500-B8C20	5	8	20	12
3ACI-10-764-600-B9C22	6	9	22	16



### Machined Turbo Flange / 90° Elbow / Floating ANSI Flange

Part Number	A	B	C	WT
3ACI-10-861F-500-B6.63C23.25	5	6.63	23.25	21
3ACI-10-861F-600-B7.63C24.50	6	7.63	24.50	26

Both 5" and 6" connectors are equipped with a 5" machined turbo flange.



All dimensions are in inches. All weights are in pounds. Weights are approximate. Larger sizes available. Call Product Specialist for details.  
 All ANSI flanges may be replaced with a standard Caterpillar, Cummins, or MTU engine flanges.  
 Flex is 321 stainless steel. End connections are carbon steel. Connections available in stainless steel. Call Product Specialist for details.

World Headquarters  
 Stoughton Wisconsin  
 United States



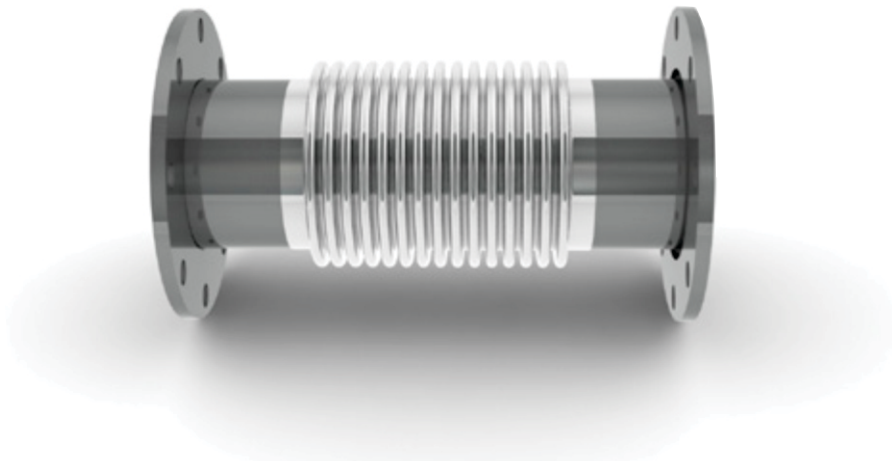
1560 Williams Drive  
 Stoughton, WI 53589  
 Tel: 608-719-1800  
 nelsonglobalproducts.com

GT Exhaust and Silex are divisions of Nelson Global Products



# 11—Bellows Specifications

## Bellows / Expansion Joint - Technical Specifications



Specifications for Single Ply Bellows (Expansion Joints)

Nominal Size (in.)	PSIG	Temp ( ° F )	Axial Comp		Lateral Offset		Axial Spring Rate lbs./in.		Lateral Spring Rate lbs./in.**		Fatigue* (Cycle)
			S	L	S	L	S	L	S	L	
3"	5	1200°	1.0	2.0	.125	.50	261	156	249	53	10,000
4"	5	1200°	1.0	2.0	.125	.50	239	111	442	51	10,000
5"	5	1200°	1.0	2.0	.062	.50	459	202	1201	133	10,000
6"	5	1200°	1.0	2.0	.062	.50	542	239	1964	218	10,000
8"	5	1200°	1.0	2.0	.031	.50	712	317	4361	488	10,000
10"	5	1200°	1.0	2.0	.031	.25	693	322	7351	854	10,000
12"	5	1200°	1.0	2.0	.031	.25	828	385	12,266	1428	10,000
14"	5	1200°	1.0	2.0	.031	.25	661	308	12,445	1448	10,000
16"	5	1200°	1.0	2.0	.031	.25	753	351	18,189	2114	10,000
18"	5	1200°	1.0	2.0	.031	.25	845	393	25,420	2958	10,000
20"	5	1200°	1.0	2.0	.031	.25	936	436	34,370	3996	10,000
22"	5	1200°	1.0	2.0	.031	.25	1,027	478	45,161	5255	10,000
24"	5	1200°	1.0	2.0	.031	.25	1,118	520	58,048	6753	10,000

Movements are Concurrent

Numbers presented are for 8"-12" and 12"-24" size bellows capsules.

\*Numbers vary depending upon overall length.

\*\*All Bellows designs are per Expansion Joint Manufacturers Association 9th Edition.

For specific requirements contact a Product Specialist.

All dimensions are in inches.

Consult a Product Specialist if greater movement is needed.

Larger diameters available upon request.

[For further information on quotes, please contact a Product Specialist](#)



Silex: 1-800-387-7818  
 Sales/Quote Email: [Silex.Sales@nelsongp.com](mailto:Silex.Sales@nelsongp.com)  
 Order Email: [Silex.Orders@nelsongp.com](mailto:Silex.Orders@nelsongp.com)

[silex.com](http://silex.com)

GT Phone: 1-888-894-3726  
 Sales/Quote Email: [GTExhaust.Sales@nelsongp.com](mailto:GTExhaust.Sales@nelsongp.com)  
 Order Email: [GTExhaust.Orders@nelsongp.com](mailto:GTExhaust.Orders@nelsongp.com)

[gtexhaust.com](http://gtexhaust.com)

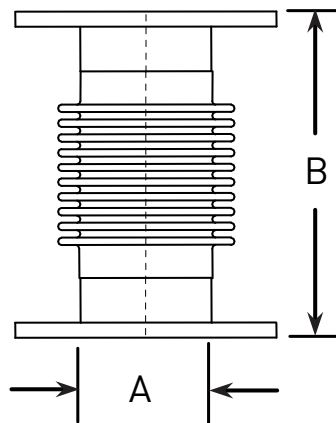


# 11—Bellows

## Bellows / Expansion Joints

### Floating ANSI Flange / ANSI Flange

Part Number	A	B
3ACI-11-1F1-3512	3.5	12
3ACI-11-1F1-412	4	12
3ACI-11-1F1-514	5	14
3ACI-11-1F1-612	6	12
3ACI-11-1F1-618	6	18
3ACI-11-1F1-812	8	12
3ACI-11-1F1-818	8	18
3ACI-11-1F1-1012	10	12
3ACI-11-1F1-1018	10	18
3ACI-11-1F1-1212	12	12
3ACI-11-1F1-1218	12	18
3ACI-11-1F1-1412	14	12
3ACI-11-1F1-1418	14	18
3ACI-11-1F1-1612	16	12
3ACI-11-1F1-1618	16	18
3ACI-11-1F1-1812	18	12
3ACI-11-1F1-1818	18	18
3ACI-11-1F1-2012	20	12
3ACI-11-1F1-2018	20	18
3ACI-11-1F1-2212	22	12
3ACI-11-1F1-2218	22	18
3ACI-11-1F1-2412	24	12
3ACI-11-1F1-2418	24	18
3ACI-11-1F1-2612	26	12
3ACI-11-1F1-2618	26	18
3ACI-11-1F1-2812	28	12
3ACI-11-1F1-2818	28	18
3ACI-11-1F1-3012	30	12
3ACI-11-1F1-3018	30	18



All ANSI flanges may be replaced with a standard Caterpillar, Cummins, or MTU engine flanges.

Bellows are 321 stainless steel. End connections are carbon steel. Connections available in stainless steel. Call Product Specialist for details.

Bellows flow liners are recommended for exhaust 6" and below when gas/stream flow conditions are greater than or equal to 4 feet / second / inch of diameter.

Bellows flow liners are recommended for exhaust 8" and above when gas/stream flow conditions are greater than or equal to 25 feet / second.

World Headquarters  
Stoughton Wisconsin  
United States



1560 Williams Drive  
Stoughton, WI 53589  
Tel: 608-719-1800  
nelsonglobalproducts.com

GT Exhaust and Silex are divisions of Nelson Global Products

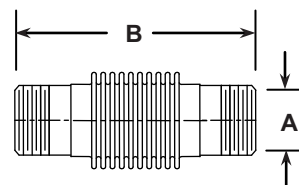
# 11—Bellows

## Bellows / Expansion Joints

### Male NPT / Male NPT

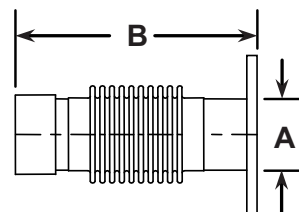
Part Number	A	B
3ACI-11-22-3514	3.5	14
3ACI-11-22-414	4	14
3ACI-11-22-516	5	16
3ACI-11-22-618	6	18

Threaded pipe nipples may be replaced with plain pipe stubs.



### Female Half Coupling / ANSI Flange

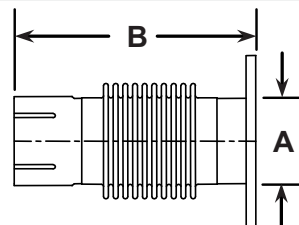
Part Number	A	B
3ACI-11-31-3514	3.5	14
3ACI-11-31-414	4	14
3ACI-11-31-516	5	16
3ACI-11-31-618	6	18



### Slotted ID Cuff / ANSI Flange

Part Number	A	B
3ACI-11-41-3514	3.5	14
3ACI-11-41-414	4	14
3ACI-11-41-514	5	14
3ACI-11-41-618	6	18

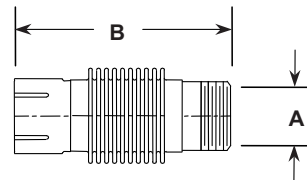
Cuff may be replaced by plain tube.



### Slotted ID Cuff / Male NPT

Part Number	A	B
3ACI-11-42-3514	3.5	14
3ACI-11-42-414	4	14
3ACI-11-42-516	5	16
3ACI-11-42-618	6	18

Threaded pipe nipples may be replaced with plain pipe stubs.



All dimensions are in inches. Larger sizes available. Call Product Specialist for details.

All ANSI flanges may be replaced with a standard Caterpillar, Cummins, or MTU engine flanges.

Bellows are 321 stainless steel. End connections are carbon steel. Connections available in stainless steel. Call Product Specialist for details.

Bellows flow liners are recommended for exhaust 6" and below when gas/stream flow conditions are greater than or equal to 4 feet / second / inch of diameter.

Bellows flow liners are recommended for exhaust 8" and above when gas/stream flow conditions are greater than or equal to 25 feet / second.



Silex: 1-800-387-7818  
 Sales/Quote Email: [Silex.Sales@nelsongp.com](mailto:Silex.Sales@nelsongp.com)  
 Order Email: [Silex.Orders@nelsongp.com](mailto:Silex.Orders@nelsongp.com)

[silex.com](http://silex.com)

[For further information on quotes, please contact a Product Specialist](#)

GT Phone: 1-888-894-3726  
 Sales/Quote Email: [GTExhaust.Sales@nelsongp.com](mailto:GTExhaust.Sales@nelsongp.com)  
 Order Email: [GTExhaust.Orders@nelsongp.com](mailto:GTExhaust.Orders@nelsongp.com)

[gtexhaust.com](http://gtexhaust.com)

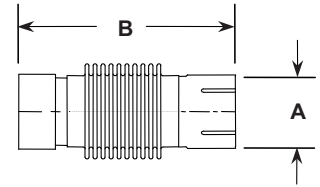


# 11—Bellows

## Bellows / Expansion Joints

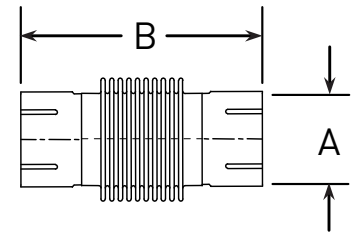
### Slotted ID Cuff / Female Half Coupling

Part Number	A	B
3ACI-11-43-3514	3.5	14
3ACI-11-43-414	4	14



### Slotted ID Cuff / Slotted ID Cuff

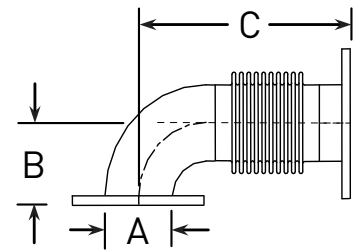
Part Number	A	B
3ACI-11-44-3518	3.5	18
3ACI-11-44-418	4	18
3ACI-11-44-518	5	18
3ACI-11-44-618	6	18
3ACI-11-44-818	8	18
3ACI-11-44-1018	10	18
3ACI-11-44-1218	12	18



Tube ends may be substituted.

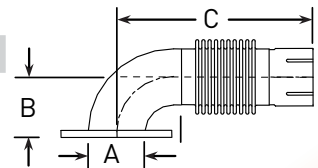
### Floating ANSI Flange / 90° Elbow / Floating ANSI Flange

Part Number	A	B	C
3ACI-11-1F61F-400-B425C16	4	4.25	16
3ACI-11-1F61F-500-B525C16	5	5.25	16
3ACI-11-1F61F-600-B625C18	6	6.25	18
3ACI-11-1F61F-800-B10C18	8	10	18
3ACI-11-1F61F-1000-B11C24	10	11	24
3ACI-11-1F61F-1200-B12C24	12	12	24



### Floating ANSI Flange / 90° Elbow / Slotted ID Cuff

Part Number	A	B	C
3ACI-11-1F64-400-B425C18	4	4.25	18
3ACI-11-1F64-500-B525C18	5	5.25	18
3ACI-11-1F64-600-B625C20	6	6.25	20



Tube ends may be substituted.

World Headquarters  
Stoughton Wisconsin  
United States



1560 Williams Drive  
Stoughton, WI 53589  
Tel: 608-719-1800  
nelsonglobalproducts.com

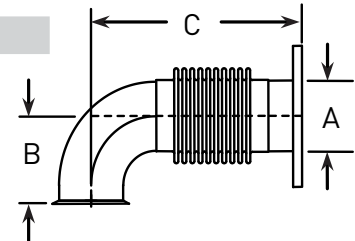
GT Exhaust and Silex are divisions of Nelson Global Products

# 11—Bellows

## Bellows / Expansion Joints

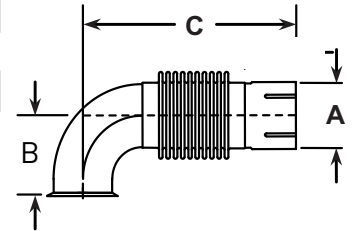
### Flared Flange / 90° Elbow / Floating ANSI Flange

Part Number	A	B	C
3ACI-11-761F-500-B8C18	5	8	18
3ACI-11-761F-600-B9C18	6	9	18



### Flared Flange / 90° Elbow / Slotted ID Cuff

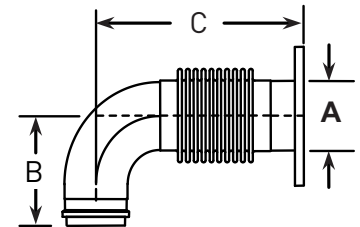
Part Number	A	B	C
3ACI-11-764-350-B5C18	3.5	5	18
3ACI-11-764-400-B5.5C18	4	5.5	18
3ACI-11-764-500-B8C20	5	8	20
3ACI-11-764-600-B9C22	6	9	22



### Machined Turbo Flange / 90° Elbow / Floating ANSI Flange

Part Number	A	B	C
3ACI-11-861F-500-B6.63C18	5	6.63	18
3ACI-11-861F-600-B7.63C18	6	7.63	18
3ACI-11-DD-861F-600-B9.47C20	6	9.47	20

Both 5" and 6" connectors are equipped with a 5" machined turbo flange.



For further information on quotes, please contact a Product Specialist



Silex: 1-800-387-7818  
 Sales/Quote Email: [Silex.Sales@nelsongp.com](mailto:Silex.Sales@nelsongp.com)  
 Order Email: [Silex.Orders@nelsongp.com](mailto:Silex.Orders@nelsongp.com)

[silex.com](http://silex.com)

GT Phone: 1-888-894-3726  
 Sales/Quote Email: [GTExhaust.Sales@nelsongp.com](mailto:GTExhaust.Sales@nelsongp.com)  
 Order Email: [GTExhaust.Orders@nelsongp.com](mailto:GTExhaust.Orders@nelsongp.com)

[gtexhaust.com](http://gtexhaust.com)



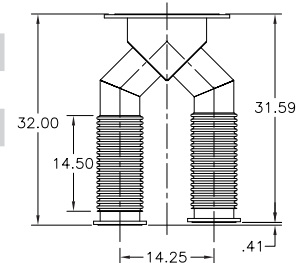
# 13—Wyes

## Cummins Engine Wyes

### Cummins QST 30

Part Number	Gen Set Model	Size	WT
3ACI-13-34296	DQFAA 750	6 X 6 X 10	57
3ACI-13-34296	DQFAB 800	6 X 6 X 10	57
3ACI-13-33671	DQFAC 900	6 X 6 X 12	69
3ACI-13-37290	DQFAD 1000	6 X 6 X 14	75

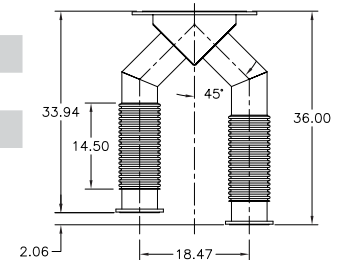
Floating Cummins flanged inlets. Floating ANSI flanged outlet.



### Cummins QSK 50

Part Number	Gen Set Model	Size	WT
3ACI-13-37291	DQKAA 1250	6 X 6 X 12	72
3ACI-13-36209	DQKAB 1250	6 X 6 X 14	78
3ACI-13-36209	DQKAB 1500	6 X 6 X 14	78
3ACI-13-39349	DQKAB 1500	8 X 8 X 14	91

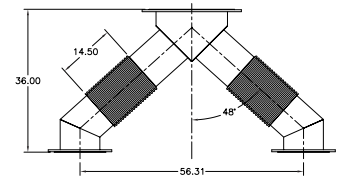
Floating Cummins flanged inlets. Floating ANSI flanged outlet.



### Cummins QSK 60

Part Number	Gen Set Model	Size	WT
3ACI-13-37294	DQKAA 1750	10 X 10 X 14	157
3ACI-13-37295	DQKAA 1750	10 X 10 X 16	162
3ACI-13-37295	DQKAB 2000	10 X 10 X 16	162
3ACI-13-37296	DQKAB 2000	10 X 10 X 18	163
3ACI-13-37297	DQKAB 2000	10 X 10 X 20	176
3ACI-13-14913	DQKH 2250	10 X 10 X 18	163
3ACI-13-37645	DQKH 2250	10 X 10 X 20	176

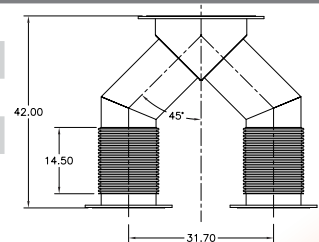
Floating ANSI flanged inlets and outlet, unless otherwise noted.



### Cummins QSK 78

Part Number	Gen Set Model	Size	WT
3ACI-13-22527	DQLA 2700 & DQLC 2500	12 X 12 X 18	187
3ACI-13-23243	DQLA 2700 & DQLC 2500	12 X 12 X 20	203
3ACI-13-23260	DQLA 2700 & DQLC 2500	12 X 12 X 22	212
3ACI-13-23261	DQLA 2700 & DQLC 2500	12 X 12 X 24	226

Floating ANSI flanged inlets. Floating ANSI flanged outlet.



PLEASE ENSURE FIT AND FUNCTION FOR WYE BEFORE ORDERING.

All dimensions are in inches. All weights are in pounds. Weights are approximate. Larger sizes available. Call Product Specialist for details.

All ANSI flanges may be replaced with a standard Caterpillar, Cummins, or MTU engine flanges.

Wyes are carbon steel construction with 321 stainless steel corrugated flex hose. Connections available in stainless steel. Call Product Specialist for details.

World Headquarters  
Stoughton Wisconsin  
United States



1560 Williams Drive  
Stoughton, WI 53589  
Tel: 608-719-1800  
nelsonglobalproducts.com

GT Exhaust and Silex are divisions of Nelson Global Products

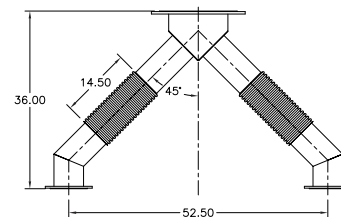
# 14—Wyes

## MTU Engine Wyes

MTU 2000 Series		650-1000 DSEC	12V-2000 & 16V-2000
Part Number	kW	Size	WT

3ACI-14-35467	650	6 X 6 X 10	70
3ACI-14-35467	750	6 X 6 X 10	70
3ACI-14-36227	900	6 X 6 X 12	82
3ACI-14-36227	1000	6 X 6 X 12	82

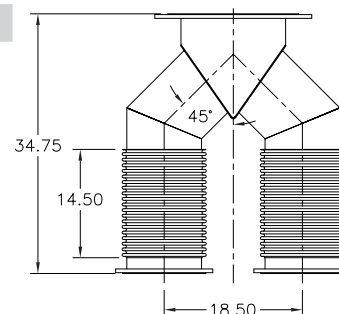
Floating 6" MTU flanged inlets. Floating ANSI flanged outlet.



MTU 4000 Series			12V-4000
Part Number	kW	Size	WT

3ACI-14-14910	1250, 1350, 1500, & 1750	10 X 10 X 14	118
3ACI-14-18457	1250, 1350, 1500, & 1750	10 X 10 X 16	127

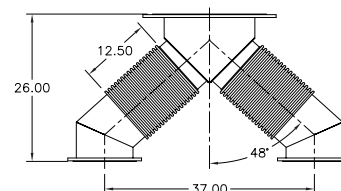
Floating 10" MTU flanged inlets. Floating ANSI flanged outlet.



MTU 4000 Series			16V-4000
Part Number	kW	Size	WT

3ACI-14-13692	2000	10 X 10 X 16	117
3ACI-14-14911	2000	10 X 10 X 18	118

Floating 10" MTU flanged inlets. Floating ANSI flanged outlet.



All dimensions are in inches. All weights are in pounds. Weights are approximate. Larger sizes available. Call Product Specialist for details.  
 10" MTU flanged inlets and ANSI flanged outlet, unless otherwise noted. All ANSI flanges may be replaced with a standard Caterpillar, Cummins, or MTU engine flanges.  
 Wyes are carbon steel construction with 321 stainless steel corrugated flex hose. Connections available in stainless steel. Call Product Specialist for details.

[For further information on quotes, please contact a Product Specialist](#)



Silex: 1-800-387-7818  
 Sales/Quote Email: [Silex.Sales@nelsongp.com](mailto:Silex.Sales@nelsongp.com)  
 Order Email: [Silex.Orders@nelsongp.com](mailto:Silex.Orders@nelsongp.com)

[silex.com](http://silex.com)

GT Phone: 1-888-894-3726  
 Sales/Quote Email: [GTExhaust.Sales@nelsongp.com](mailto:GTExhaust.Sales@nelsongp.com)  
 Order Email: [GTExhaust.Orders@nelsongp.com](mailto:GTExhaust.Orders@nelsongp.com)

[gtexhaust.com](http://gtexhaust.com)



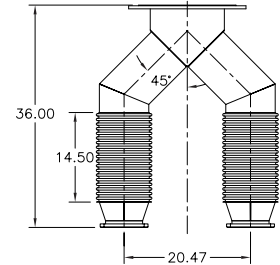
# 15—Wyes

## Caterpillar Engine Wyes

### Caterpillar 3508 B 6" CAT Flanged Inlets

Part Number	kW	Size	WT
3ACI-15-9330	910	8 X 8 X 12	90

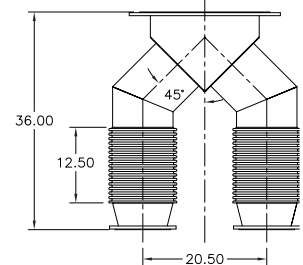
Floating CAT flanged inlets and floating ANSI flanged outlet, unless otherwise noted.



### Caterpillar 3512 C 8" CAT Flanged Inlets

Part Number	kW	Size	WT
3ACI-15-9326	1275	8 X 8 X 14	102
3ACI-15-9326	1360	8 X 8 X 14	102
3ACI-15-9327	1360	8 X 8 X 16	113
3ACI-15-9326	1400	8 X 8 X 14	102
3ACI-15-9327	1400	8 X 8 X 16	113
3ACI-15-9328	1500	10 X 10 X 14	117
3ACI-15-9329	1500	10 X 10 X 16	126

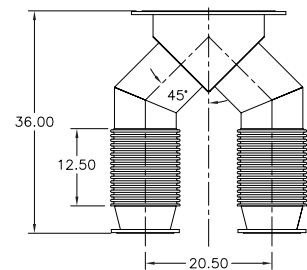
Floating CAT flanged inlets and floating ANSI flanged outlet, unless otherwise noted.



### Caterpillar 3516 C 8" CAT Flanged Inlets

Part Number	kW	Size	WT
3ACI-15-8571	1640	10 X 10 X 16	126
3ACI-15-8572	1640	10 X 10 X 18	128
3ACI-15-8571	1825	10 X 10 X 16	126
3ACI-15-8572	1825	10 X 10 X 18	128
3ACI-15-8571	2000	10 X 10 X 16	126
3ACI-15-8572	2000	10 X 10 X 18	128

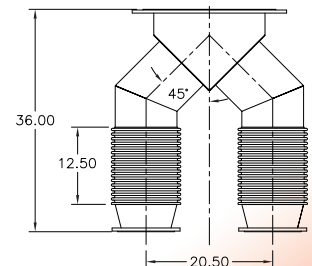
Floating CAT flanged inlets and floating ANSI flanged outlet, unless otherwise noted.



### Caterpillar 3516 Quad Turbo 8" CAT Flanged Inlets

Part Number	kW	Size	WT
3ACI-15-8570	1500	10 X 10 X 14	117
3ACI-15-8571	1500	10 X 10 X 16	126
3ACI-15-8571	1750	10 X 10 X 16	126
3ACI-15-8572	1750	10 X 10 X 18	128

Floating CAT flanged inlets and floating ANSI flanged outlet, unless otherwise noted.



All dimensions are in inches. All weights are in pounds.

All ANSI flanges may be replaced with a standard Caterpillar, Cummins, or MTU engine flanges.

Wyes are carbon steel construction with 321 stainless steel corrugated flex hose. Connections available in stainless steel. Call Product Specialist for details.

**World Headquarters**  
Stoughton Wisconsin  
United States



1560 Williams Drive  
Stoughton, WI 53589  
Tel: 608-719-1800  
nelsonglobalproducts.com

GT Exhaust and Silex are divisions of Nelson Global Products



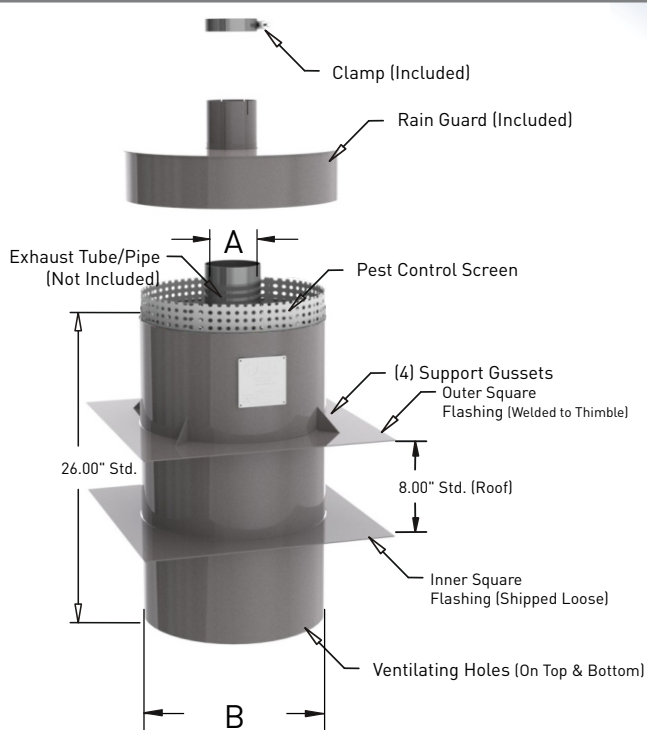
## 20—Thimbles

### Wall and Roof Thimbles

Type C		Combustible Walls		
Part Number	A	B	WT	
3ACI-20-C-200	2	14	52	
3ACI-20-C-238	2.38	15	53	
3ACI-20-C-250	2.5	15	53	
3ACI-20-C-288	2.88	15	57	
3ACI-20-C-300	3	15	57	
3ACI-20-C-350	3.5	16	58	
3ACI-20-C-400	4	16	66	
3ACI-20-C-450	4.5	17	68	
3ACI-20-C-500	5	17	88	
3ACI-20-C-556	5.56	18	90	
3ACI-20-C-600	6	18	98	
3ACI-20-C-663	6.63	19	100	
3ACI-20-C-800	8	20	114	
3ACI-20-C-863	8.63	21	117	
3ACI-20-C-1000	10	22	130	
3ACI-20-C-1075	10.75	23	136	
3ACI-20-C-1200	12	24	146	
3ACI-20-C-1275	12.75	25	150	
3ACI-20-C-1400	14	26	159	
3ACI-20-C-1600	16	28	175	
3ACI-20-C-1800	18	30	218	

Type NC		Roof & Non-Combustible Walls		
Part Number	A	B	WT	
3ACI-20-NC-200	2	9	38	
3ACI-20-NC-238	2.38	9	39	
3ACI-20-NC-250	2.5	9	39	
3ACI-20-NC-288	2.88	10	43	
3ACI-20-NC-300	3	10	43	
3ACI-20-NC-350	3.5	10	44	
3ACI-20-NC-400	4	11	46	
3ACI-20-NC-450	4.5	11	49	
3ACI-20-NC-500	5	12	60	
3ACI-20-NC-556	5.56	12	61	
3ACI-20-NC-600	6	13	69	
3ACI-20-NC-663	6.63	13	70	
3ACI-20-NC-800	8	15	84	
3ACI-20-NC-863	8.63	15	86	
3ACI-20-NC-1000	10	17	104	
3ACI-20-NC-1075	10.75	17	108	
3ACI-20-NC-1200	12	19	117	
3ACI-20-NC-1275	12.75	19	121	
3ACI-20-NC-1400	14	20	131	
3ACI-20-NC-1600	16	22	145	
3ACI-20-NC-1800	18	26	180	



OD Measurement of Standard Schedule Pipe	
Nominal Pipe Size	OD (Thimble "A" Dim)
2	2.38
2.5	2.88
3	3.50
4	4.50
5	5.56
6	6.63
8	8.63
10	10.75
12	12.75
14	14.00

"A" Dimension measures the outside diameter of the exhaust tube or pipe. See chart above for outside diameter of standard pipe.

All dimensions are in inches. All weights are in pounds. Weights are approximate. Carbon steel construction. Available in stainless steel. Call Product Specialist for details.

When calculating height thimble must have a 9" clearance on each side of the wall or roof. To prevent warping, outer flashing is not welded 100%.

Be sure to include correct roof pitch on all roof applications. There is an additional charge for non-flat roof applications.

Conforms to NFPA 37 and 110. The above thimbles have been sized for standard [8"] thick walls and roofs.

Thermal barrier used within the thimbles is composed of high density, type "E" fibers, fibrous glass heavy-duty insulation. Apply high-temp Mil-A-46106B 100 Series Silicon RTV where needed.

Pest Control Screen adds 2"-3" to exterior height. Consult Product Specialist for specifics. All Carbon Steel Thimbles will come with High Heat Black Paint non-standard.

[For further information on quotes, please contact a Product Specialist](#)



Silex: 1-800-387-7818  
 Sales/Quote Email: [Silex.Sales@nelsingp.com](mailto:Silex.Sales@nelsingp.com)  
 Order Email: [Silex.Orders@nelsingp.com](mailto:Silex.Orders@nelsingp.com)

silex.com

GT Phone: 1-888-894-3726  
 Sales/Quote Email: [GTExhaust.Sales@nelsingp.com](mailto:GTExhaust.Sales@nelsingp.com)  
 Order Email: [GTExhaust.Orders@nelsingp.com](mailto:GTExhaust.Orders@nelsingp.com)

gtexhaust.com



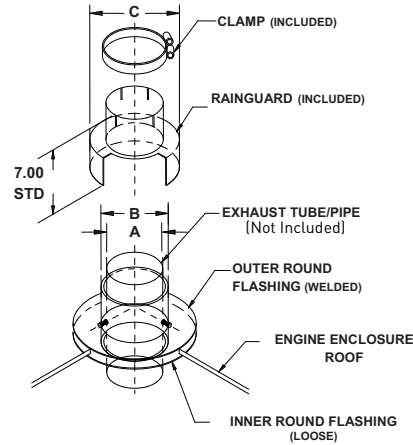
# 21—Roof Jacks

## Roof Jacks

Part Number	A	B	C
3ACI-21-C-400	4	5	15
3ACI-21-C-450	4.5	5.5	15
3ACI-21-C-500	5	6	15
3ACI-21-C-556	5.56	6.5	15
3ACI-21-C-600	6	7	15
3ACI-21-C-663	6.63	7.8	15
3ACI-21-C-800	8	9	18
3ACI-21-C-863	8.63	9.8	18
3ACI-21-C-1000	10	11	20
3ACI-21-C-1075	10.75	12	20
3ACI-21-C-1200	12	13	24
3ACI-21-C-1275	12.75	14	24

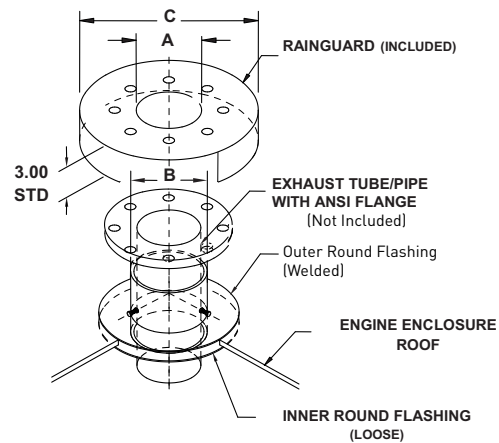
Clamp included.

Roof jacks are designed for non-combustible gauge metal enclosures only.



Part Number	A	B	C
3ACI-21-F-400	4	5	15
3ACI-21-F-450	4.5	5.5	15
3ACI-21-F-500	5	6	15
3ACI-21-F-556	5.56	6.5	15
3ACI-21-F-600	6	7	15
3ACI-21-F-663	6.63	7.8	15
3ACI-21-F-800	8	9	18
3ACI-21-F-863	8.63	9.8	18
3ACI-21-F-1000	10	11	20
3ACI-21-F-1075	10.75	12	20
3ACI-21-F-1200	12	13	24
3ACI-21-F-1275	12.75	14	24

Roof jacks are designed for non-combustible gauge metal enclosures only.



CAUTION: Roof jacks are designed for non-combustible metal enclosures only. Avoid potential fire hazard. Product should never be exposed to combustible material. DO NOT USE if combustible materials are present. Refer to Wall and Roof Thimbles (page 15) for applications where combustible materials will come in contact with the product. All dimensions are in inches. Larger sizes available. Call Product Specialist for details. Available in stainless steel. Call Product Specialist for details.

World Headquarters  
Stoughton Wisconsin  
United States



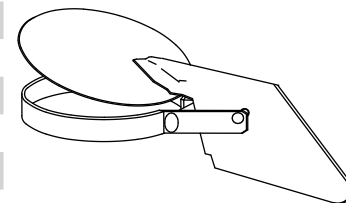
1560 Williams Drive  
Stoughton, WI 53589  
Tel: 608-719-1800  
nelsonglobalproducts.com

GT Exhaust and Silex are divisions of Nelson Global Products

## 22—Rain Caps

### Standard and Heavy Duty Rain Caps

Standard	Carbon Steel	
Part Number	ID (Collar)	
3ACI-22-150	1.5	
3ACI-22-200	2	
3ACI-22-238	2.38	
3ACI-22-250	2.5	
3ACI-22-288	2.88	
3ACI-22-300	3	
3ACI-22-350	3.5	
3ACI-22-400	4	
3ACI-22-450	4.5	
3ACI-22-500	5	
3ACI-22-556	5.56	
3ACI-22-600	6	
3ACI-22-663	6.63	



Zinc Plated

Recommended for both horizontal and vertical installation.

Heavy Duty	Carbon Steel	
Part Number	ID (Collar)	Weight
3ACI-22-700-HD	7	5
3ACI-22-800-HD	8	5
3ACI-22-863-HD	8.63	6
3ACI-22-900-HD	9	6
3ACI-22-1000-HD	10	7
3ACI-22-1075-HD	10.75	8
3ACI-22-1200-HD	12	9
3ACI-22-1275-HD	12.75	10
3ACI-22-1400-HD	14	26
3ACI-22-1600-HD	16	29
3ACI-22-1800-HD	18	43
3ACI-22-2000-HD	20	64
3ACI-22-2200-HD	22	72
3ACI-22-2400-HD	24	84
3ACI-22-2600-HD	26	88
3ACI-22-2800-HD	28	94
3ACI-22-3000-HD	30	99



High Heat Black

Recommended for vertical installation only.

All dimensions are in inches. All weights are in pounds. Weights are approximate. Other sizes available. Call Product Specialist for details.

[For further information on quotes, please contact a Product Specialist](#)



Silex: 1-800-387-7818  
 Sales/Quote Email: [Silex.Sales@nelsongp.com](mailto:Silex.Sales@nelsongp.com)  
 Order Email: [Silex.Orders@nelsongp.com](mailto:Silex.Orders@nelsongp.com)

[silex.com](http://silex.com)

GT Phone: 1-888-894-3726  
 Sales/Quote Email: [GTExhaust.Sales@nelsongp.com](mailto:GTExhaust.Sales@nelsongp.com)  
 Order Email: [GTExhaust.Orders@nelsongp.com](mailto:GTExhaust.Orders@nelsongp.com)

[gtexhaust.com](http://gtexhaust.com)



## 22—Rain Caps

### Stainless Steel Rain Caps

Standard		304 Stainless Steel
Part Number	ID (Collar)	
3ACI-22-200-S304	2	
3ACI-22-238-S304	2.38	
3ACI-22-250-S304	2.5	
3ACI-22-288-S304	2.88	
3ACI-22-300-S304	3	
3ACI-22-350-S304	3.5	
3ACI-22-400-S304	4	
3ACI-22-450-S304	4.5	
3ACI-22-500-S304	5	
3ACI-22-556-S304	5.56	
3ACI-22-600-S304	6	
3ACI-22-663-S304	6.63	



Recommended for vertical installation only.

Heavy Duty		304 Stainless Steel
Part Number	ID (Collar)	Weight
3ACI-22-800-S304	8	5
3ACI-22-863-S304	8.63	6
3ACI-22-1000-S304	10	7
3ACI-22-1075-S304	10.75	8
3ACI-22-1200-S304	12	9
3ACI-22-1275-S304	12.75	10
3ACI-22-1400-S304	14	26
3ACI-22-1600-S304	16	29
3ACI-22-1800-S304	18	43
3ACI-22-2000-S304	20	64
3ACI-22-2200-S304	22	72
3ACI-22-2400-S304	24	84



Recommended for vertical installation only.

All dimensions are in inches. All weights are in pounds. Weights are approximate. Other sizes available. Call Product Specialist for details.

**World Headquarters**  
Stoughton Wisconsin  
United States



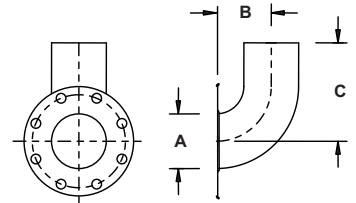
1560 Williams Drive  
Stoughton, WI 53589  
Tel: 608-719-1800  
nelsonglobalproducts.com

*GT Exhaust and Silex are divisions of Nelson Global Products*

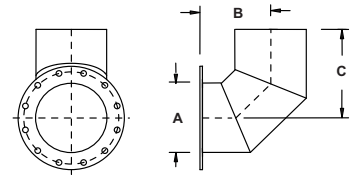
## 23-24—Elbows

### 90° Elbows: Flanged One End

90° Tube Elbow (Short Radius)			Flanged One End	
Part Number	A	B	C	WT
3ACI-23-400	4	4.38	7.5	9
3ACI-23-500	5	5.25	9	11
3ACI-23-600	6	6.25	11	14
3ACI-23-800	8	10	12	26
3ACI-23-1000	10	11	14	35
3ACI-23-1200	12	12	16	48



90° Mitred Elbow (Short Radius)			Flanged One End	
Part Number	A	B	C	WT
3ACI-24-800	8	8	8	22
3ACI-24-1000	10	10	10	31
3ACI-24-1200	12	12	12	45
3ACI-24-1400	14	14	14	55
3ACI-24-1600	16	16	16	81
3ACI-24-1800	18	18	18	94
3ACI-24-2000	20	20	20	114
3ACI-24-2200	22	22	22	133
3ACI-24-2400	24	24	24	158
3ACI-24-2600	26	26	26	183
3ACI-24-2800	28	28	28	208
3ACI-24-3000	30	30	30	387



Available in stainless steel. Call Product Specialist for details. Connection(s) are ANSI steel plate flanges unless otherwise specified.

[For further information on quotes, please contact a Product Specialist](#)



Silex: 1-800-387-7818  
 Sales/Quote Email: [Silex.Sales@nelsongp.com](mailto:Silex.Sales@nelsongp.com)  
 Order Email: [Silex.Orders@nelsongp.com](mailto:Silex.Orders@nelsongp.com)

[silex.com](http://silex.com)

GT Phone: 1-888-894-3726  
 Sales/Quote Email: [GTExhaust.Sales@nelsongp.com](mailto:GTExhaust.Sales@nelsongp.com)  
 Order Email: [GTExhaust.Orders@nelsongp.com](mailto:GTExhaust.Orders@nelsongp.com)

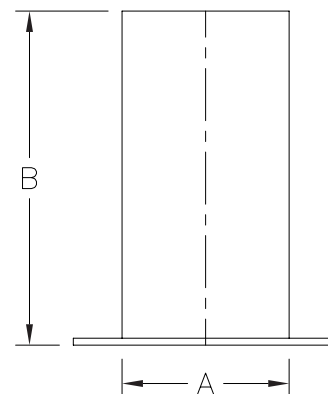
[gtexhaust.com](http://gtexhaust.com)



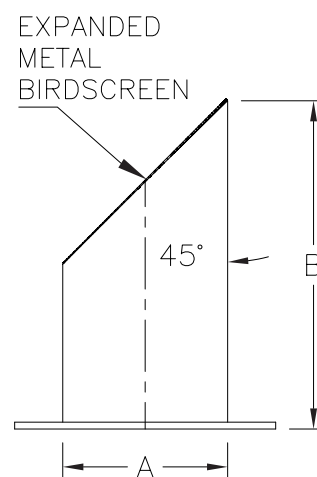
## 25—Outlet Extensions

### Assembled Tubing

Straight Tube (Stacks)		Flanged One End
Part Number	A (OD)	B
3ACI-25-400-1	4	12
3ACI-25-450-1	4.5	12
3ACI-25-500-1	5	15
3ACI-25-600-1	6	18
3ACI-25-800-1	8	18
3ACI-25-1000-1	10	20
3ACI-25-1200-1	12	24
3ACI-25-1400-1	14	28
3ACI-25-1600-1	16	32
3ACI-25-1800-1	18	36
3ACI-25-2000-1	20	40
3ACI-25-2200-1	22	44
3ACI-25-2400-1	24	48
3ACI-25-2600-1	26	48
3ACI-25-2800-1	28	48
3ACI-25-3000-1	30	48



Straight Tube	45° Cut with Bird Screen	
Part Number	A (OD)	B
3ACI-25-400-2	4	12
3ACI-25-450-2	4.5	12
3ACI-25-500-2	5	15
3ACI-25-600-2	6	18
3ACI-25-800-2	8	18
3ACI-25-1000-2	10	20
3ACI-25-1200-2	12	24
3ACI-25-1400-2	14	28
3ACI-25-1600-2	16	32
3ACI-25-1800-2	18	36
3ACI-25-2000-2	20	40
3ACI-25-2200-2	22	44
3ACI-25-2400-2	24	48
3ACI-25-2600-2	26	48
3ACI-25-2800-2	28	48
3ACI-25-3000-2	30	48



All dimensions are in inches. Larger sizes available. Call Product Specialist for details.  
 Available in stainless steel. Call Product Specialist for details. Connection(s) are ANSI steel plate flanges unless otherwise specified.  
 See price sheet for optional lengths.

World Headquarters  
 Stoughton Wisconsin  
 United States



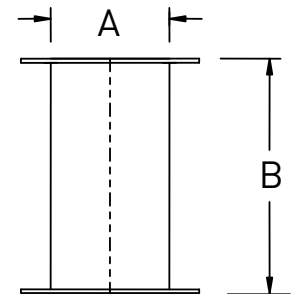
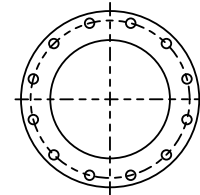
1560 Williams Drive  
 Stoughton, WI 53589  
 Tel: 608-719-1800  
 nelsonglobalproducts.com

GT Exhaust and Silex are divisions of Nelson Global Products

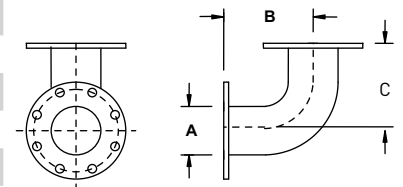
## 25-26—Outlet Extensions

Assembled Tubing & 90° Elbows

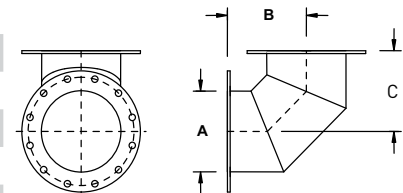
Straight Tube		Flanged Both Ends		
Part Number	Std. Length	A (OD)	B	WT
3ACI-25-11-400-12	12	4	12	16
3ACI-25-11-450-12	12	4.5	12	16
3ACI-25-11-500-15	15	5	15	23
3ACI-25-11-600-18	18	6	18	25
3ACI-25-11-800-18	18	8	18	38
3ACI-25-11-1000-20	20	10	20	50
3ACI-25-11-1200-24	24	12	24	72
3ACI-25-11-1400-28	28	14	28	87
3ACI-25-11-1600-32	32	16	32	108
3ACI-25-11-1800-36	36	18	36	134
3ACI-25-11-2000-40	40	20	40	166
3ACI-25-11-2200-48	48	22	48	201
3ACI-25-11-2400-48	48	24	48	226
3ACI-25-11-2600-48	48	26	48	247
3ACI-25-11-2800-48	48	28	48	268
3ACI-25-11-3000-48	48	30	48	436



90° Elbow (Short Radius)		Flanged Both Ends			WT
Part Number	Tube / Mitred	A	B	C	WT
3ACI-26-400	Tube	4	7.5	7.5	16
3ACI-26-500	Tube	5	9	9	20
3ACI-26-600	Tube	6	11	11	24
3ACI-26-800	Tube	8	12	12	39
3ACI-26-1000	Tube	10	14	14	53
3ACI-26-1200	Tube	12	16	16	75
3ACI-26-M-800	Mitred	8	8	8	34
3ACI-26-M-1000	Mitred	10	10	10	47
3ACI-26-M-1200	Mitred	12	12	12	67
3ACI-26-M-1400	Mitred	14	14	14	80
3ACI-26-M-1600	Mitred	16	16	16	111
3ACI-26-M-1800	Mitred	18	18	18	124
3ACI-26-M-2000	Mitred	20	20	20	150
3ACI-26-M-2200	Mitred	22	22	22	171
3ACI-26-M-2400	Mitred	24	24	24	203
3ACI-26-M-2600	Mitred	26	26	26	232
3ACI-26-M-2800	Mitred	28	28	28	262
3ACI-26-M-3000	Mitred	30	30	30	447



Tube Elbow



Mitred Elbow

All dimensions are in inches. All weights are in pounds. Weights are approximate. Larger sizes available. Call Product Specialist for details. Available in stainless steel. Call Product Specialist for details. Connection(s) are ANSI steel plate flanges unless otherwise specified.

[For further information on quotes, please contact a Product Specialist](#)



Silex: 1-800-387-7818  
 Sales/Quote Email: [Silex.Sales@nelsongp.com](mailto:Silex.Sales@nelsongp.com)  
 Order Email: [Silex.Orders@nelsongp.com](mailto:Silex.Orders@nelsongp.com)

[silex.com](http://silex.com)

GT Phone: 1-888-894-3726  
 Sales/Quote Email: [GTExhaust.Sales@nelsongp.com](mailto:GTExhaust.Sales@nelsongp.com)  
 Order Email: [GTExhaust.Orders@nelsongp.com](mailto:GTExhaust.Orders@nelsongp.com)

[gtexhaust.com](http://gtexhaust.com)

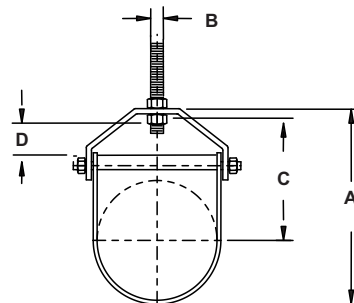


## 27—Pipe Hangers

### Clevis & Pear Shaped Pipe Hangers

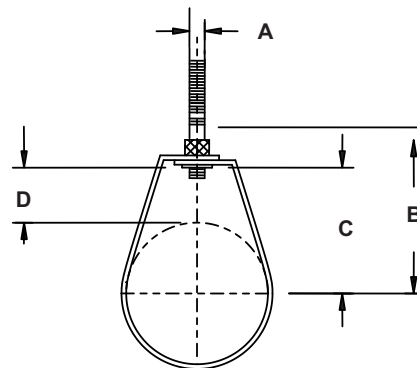
Pipe Hangers		Clevis					
Part Number	Pipe Size	A	B	C	D	Bolt Size	WT
3ACI-27-1-150	1.5	4.5	.38	3.0	1.63	.25	730
3ACI-27-1-200	2	4.63	.38	2.94	1.31	.25	730
3ACI-27-1-250	2.5	6	.50	3.88	1.75	.38	1,350
3ACI-27-1-300	3	6.69	.50	4.25	1.75	.38	1,350
3ACI-27-1-350	3.5	7.19	.50	4.56	1.75	.38	1,430
3ACI-27-1-400	4	8.19	.63	5.06	2.06	.38	1,430
3ACI-27-1-500	5	9.5	.63	5.88	2.06	.50	1,940
3ACI-27-1-600	6	10.69	.75	6.31	2.25	.50	2,000
3ACI-27-1-800	8	13.75	.88	8.38	2.50	.63	3,600
3ACI-27-1-1000	10	16.44	.88	9.88	2.50	.75	3,800
3ACI-27-1-1200	12	18.63	.88	11.06	2.94	.75	4,200
3ACI-27-1-1400	14	20.88	1.0	12.44	3.19	.88	4,600
3ACI-27-1-1600	16	23.31	1.0	13.88	3.19	.88	4,800
3ACI-27-1-1800	18	25.25	1.0	14.69	2.94	.88	4,800
3ACI-27-1-2000	20	29.31	1.25	17.38	4.19	1.0	4,800
3ACI-27-1-2400	24	33.19	1.5	19.63	3.75	1.0	4,800

Heavy plate steel construction.



Pipe Hangers		Pear Shaped				
Part Number	Pipe Size	A	B	C	D	WT
3ACI-27-2-150	1.5	.38	2.88	2.0	1.0	300
3ACI-27-2-200	2	.38	3.31	2.44	1.25	300
3ACI-27-2-250	2.5	.50	3.94	2.94	1.5	525
3ACI-27-2-300	3	.50	4.25	3.25	1.5	525
3ACI-27-2-400	4	.63	5.75	4.25	2.0	650
3ACI-27-2-500	5	.63	6.31	4.81	2.06	1,000
3ACI-27-2-600	6	.75	6.88	5.38	2.06	1,000
3ACI-27-2-800	8	.88	8.56	6.94	2.63	1,000

Adjustable



World Headquarters  
Stoughton Wisconsin  
United States



1560 Williams Drive  
Stoughton, WI 53589  
Tel: 608-719-1800  
nelsonglobalproducts.com

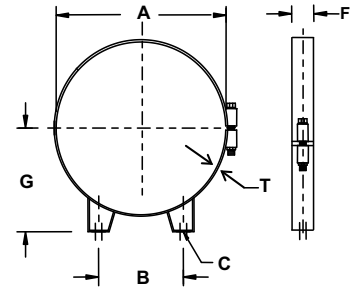
GT Exhaust and Silex are divisions of Nelson Global Products



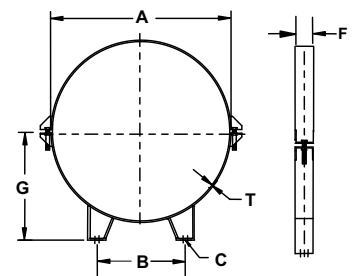
## 28—Brackets

### Round Mounting Brackets

Single Piece Construction**						Carbon Steel	
Part Number	A (ID)	B	C	F	G	T	WT
3ACI-28-400	4	2.25	.38	1.00	2.62	.125	0.5
3ACI-28-450	4.5	2.50	.38	1.00	2.86	.125	0.6
3ACI-28-500	5	3.50	.38	1.00	3.12	.125	0.7
3ACI-28-550	5.5	3.00	.38	1.00	3.33	.125	0.7
3ACI-28-600	6	3.00	.38	1.00	3.56	.125	0.8
3ACI-28-650	6.5	3.75	.38	1.00	3.83	.125	0.8
3ACI-28-700	7	4.50	.38	1.00	4.06	.125	1.0
3ACI-28-800	8	4.25	.38	1.25	5.00	.125	1.5
3ACI-28-850	8.5	4.25	.38	1.25	5.25	.125	1.5
3ACI-28-900	9	4.50	.38	1.25	5.50	.125	1.7
3ACI-28-1000	10	5.00	.38	1.25	6.00	.125	1.7
3ACI-28-1100	11	5.00	.38	1.25	6.50	.125	1.8
3ACI-28-1200	12	5.00	.38	1.25	7.00	.125	2.0
3ACI-28-1400	14	6.00	.41	1.25	8.12	.125	3.0



Two-Piece Split Design**						Carbon Steel	
Part Number	A (ID)	B	C	F	G	T	WT
3ACI-28-1600	16	8	.50	2.0	8.9	.134	5.5
3ACI-28-1800	18	9	.50	2.0	11.12	.134	6
3ACI-28-2000	20	10	.50	2.5	12.06	.134	9.5
3ACI-28-2200	22	11	.50	2.5	13.63	.134	10.5
3ACI-28-2400	24	12	.63	2.5	14.56	.134	11.5
3ACI-28-2600	26	13	.63	3.0	15.44	.190	17.5
3ACI-28-2800	28	14	.63	3.0	16.31	.190	24
3ACI-28-3000	30	15	.63	4.0	17.25	.190	27
3ACI-28-3600	36	18	.63	4.0	20.12	.190	33
3ACI-28-4200	42	21	.75	4.0	23.38	.190	44
3ACI-28-4500	45	22.5	1.0	4.0	25.19	.190	50
3ACI-28-4800	48	24	1.0	4.0	26.50	.250	63



All dimensions are in inches. All weights are in pounds. Weights are approximate. Larger sizes available. Call Product Specialist for details.  
Available in stainless steel. Call Product Specialist for details.

\*\*28 Series Brackets are not to be used for vertical installations. For vertical applications, we recommend the installation of 29 Series Brackets (found in the Silencer Catalog).  
We do not recommend using 28 Series Brackets to hang a pipe or silencer.

[For further information on quotes, please contact a Product Specialist](#)



Silex: 1-800-387-7818  
Sales/Quote Email: [Silex.Sales@nelsongp.com](mailto:Silex.Sales@nelsongp.com)  
Order Email: [Silex.Orders@nelsongp.com](mailto:Silex.Orders@nelsongp.com)

[silex.com](http://silex.com)

GT Phone: 1-888-894-3726  
Sales/Quote Email: [GTExhaust.Sales@nelsongp.com](mailto:GTExhaust.Sales@nelsongp.com)  
Order Email: [GTExhaust.Orders@nelsongp.com](mailto:GTExhaust.Orders@nelsongp.com)

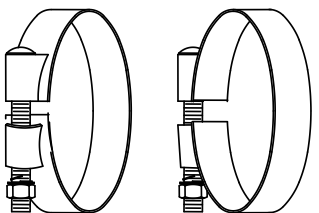
[gtexhaust.com](http://gtexhaust.com)



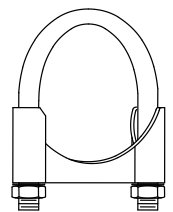
# 31-35—Clamps

Circle, Round Bolt, TruSeal, & V-Band Clamps

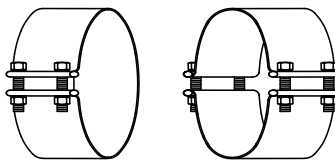
Full Circle		Carbon Steel			
Part Number	Size	Part Number	Size	Part Number	Size
3ACI-31-300	3	3ACI-31-600	6	3ACI-31-1200	12
3ACI-31-350	3.5	3ACI-31-663	6.63	3ACI-31-1275	12.75
3ACI-31-400	4	3ACI-31-800	8	3ACI-31-1400	14
3ACI-31-450	4.5	3ACI-31-863	8.63	3ACI-31-1600	16
3ACI-31-500	5	3ACI-31-1000	10		
3ACI-31-550	5.5	3ACI-31-1075	10.75		



Round Bolt			Carbon Steel		
Part Number	Size	Bolt Size	Part Number	Size	Bolt Size
3ACI-32-200	2	.31	3ACI-32-450	4.5	.38
3ACI-32-225	2.25	.31	3ACI-32-500	5	.38
3ACI-32-250	2.5	.31	3ACI-32-550	5.5	.38
3ACI-32-300	3	.31	3ACI-32-600	6	.38
3ACI-32-350	3.5	.38	3ACI-32-800	8	.50
3ACI-32-400	4	.38	3ACI-32-1000	10	.50



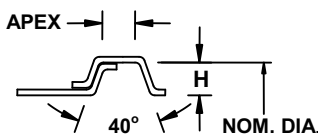
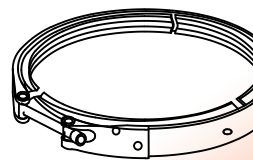
TruSeal Style		Stainless Steel	
Part Number	Size	Part Number	Size
3ACI-33-200	2	3ACI-33-450	4.5
3ACI-33-225	2.25	3ACI-33-500	5
3ACI-33-250	2.5	3ACI-33-600	6
3ACI-33-300	3	3ACI-33-800	8
3ACI-33-350	3.5	3ACI-33-1000	10
3ACI-33-400	4	3ACI-33-1200	12



**STYLE 1**  
Size 2 thru 6

**STYLE 2**  
Size 8 thru 12

Stainless V-Band Manifold					
Part Number	Tube Size	Apex	Diameter	H	Application
3ACI-35-JD-250	2.5	.345	3.13	.14	John Deere
3ACI-35-JD-400	4	.207	4.81	.28	John Deere
3ACI-35-400	4	.406	4.75	.28	Cummins L10
3ACI-35-401	4	.207	4.81	.28	Detroit 6-71, 12V71
3ACI-35-402	4	.156	4.61	.10	Airesearch TE0699
3ACI-35-450	4.5	.262	5.25	.14	AIR T7899, TH08A64
3ACI-35-500	5	.400	5.88	.28	Cummins VT50
3ACI-35-501	5	.262	5.65	.14	CAT Turbo
3ACI-35-502	5	.280	5.92	.30	Detroit Diesel
3ACI-35-550	5.5	.265	6.25	.15	16V-2000 (1000kW)

All dimensions are in inches. Larger sizes available. Call Product Specialist for details. Stainless steel available.

World Headquarters  
Stoughton Wisconsin  
United States



1560 Williams Drive  
Stoughton, WI 53589  
Tel: 608-719-1800  
nelsonglobalproducts.com

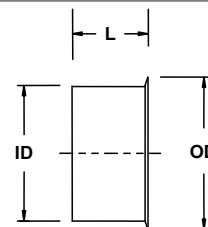
GT Exhaust and Silex are divisions of Nelson Global Products

## 36-40—Flanges

Flared, Machined Turbo, and Engine Flanges

### Flared

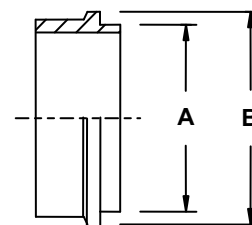
Part Number	Inner Dia	Outer Dia	Length	V-Band Clamp
3ACI-36-JD-250	2.5	3.13	3	35-JD-250
3ACI-36-300	3	3.63	1.5	Call Product Specialist
3ACI-36-350	3.5	4.25	1.5	Call Product Specialist
3ACI-36-JD-400	3.9	4.41	3	35-JD-400
3ACI-36-400	4	4.63	1.5	35-400
3ACI-36-500	5	5.75	3	35-500



### Machined Turbo

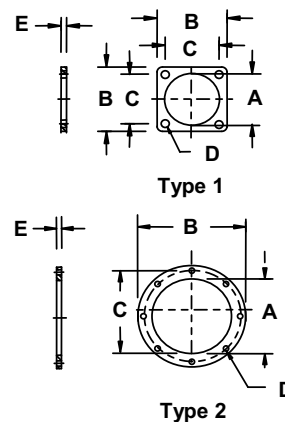
(From 1018 Heavy Wall Tubing)

Part Number	Nom. Size	A	B	Clamp	Application
3ACI-37-450	5	4.5	5	35-450	See Footnote†
3ACI-37-550	6	5.3	6.2	35-550	DA 16V2000



### Standard Engine (Caterpillar, MTU, Cummins)

Part Number	Engine	Type	A (ID)	B (OD)	C (BC)	D (Dia)	Holes	E (Thk)	WT
3ACI-38-340	CAT	1	3.0	5.5	4.13	.56	4	.5	3
3ACI-38-400	CAT	1	4.1	5.5	4.13	.56	4	.5	2
3ACI-38-500	CAT	1	5.1	6.5	5.00	.75	4	.5	3
3ACI-38-600	CAT	1	6.1	7.75	6.00	.75	4	.5	4
3ACI-38-800	CAT	2	8.1	11.0	9.88	.50	8	.5	6
3ACI-38-1000	CAT	2	10.1	13.5	12.44	.50	12	.5	9
3ACI-38-1200	CAT	2	12.1	16.0	14.80	.50	12	.5	12
3ACI-38-1400	CAT	2	14.2	18.5	16.93	.63	12	.5	15
3ACI-39-600	MTU	2	6.06	9.5	8.19	.44	6	.5	5
3ACI-39-800	MTU	2	8.1	11	9.88	.50	8	.5	6
3ACI-39-1000	MTU	2	10.0	13	11.88	.63	8	.5	7
3ACI-40-600	CUM	2	6.1	8.0	7.19	.44	8	.5	3



† 37-450 used on the following engines: Airesearch TV801, T1885, T18A40, All Schwitzer, DDA Turbo, and Cummins K.



Silex: 1-800-387-7818  
 Sales/Quote Email: [Silex.Sales@nelsongp.com](mailto:Silex.Sales@nelsongp.com)  
 Order Email: [Silex.Orders@nelsongp.com](mailto:Silex.Orders@nelsongp.com)

[silex.com](http://silex.com)

For further information on quotes, please contact a Product Specialist

GT Phone: 1-888-894-3726  
 Sales/Quote Email: [GTExhaust.Sales@nelsongp.com](mailto:GTExhaust.Sales@nelsongp.com)  
 Order Email: [GTExhaust.Orders@nelsongp.com](mailto:GTExhaust.Orders@nelsongp.com)

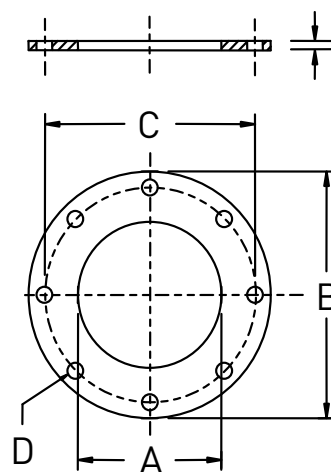
[gtexhaust.com](http://gtexhaust.com)



# 41—Flanges

## ANSI Pattern Flanges

ANSI Pattern Steel Plate		[Carbon Steel]						
Part Number	Pipe/Tube	A (D)	B (OD)	C (BC)	D (DIA)	Holes	E (THK)	WT
3ACI-41-T-200	Tube	2.00	6.0	4.75	.75	4	0.5	3.2
3ACI-41-P-200	Pipe	2.38	6.0	4.75	.75	4	0.5	3
3ACI-41-T-250	Tube	2.50	7.0	5.50	.75	4	0.5	4.2
3ACI-41-P-250	Pipe	2.88	7.0	5.50	.75	4	0.5	4
3ACI-41-T-300	Tube	3.00	7.5	6.00	.75	4	0.5	4.7
3ACI-41-P-300	Pipe	3.50	7.5	6.00	.75	4	0.5	5.2
3ACI-41-T-350	Tube	3.50	8.5	7.00	.75	8	0.5	5.5
3ACI-41-P-350	Pipe	4.00	8.5	7.00	.75	8	0.5	5.5
3ACI-41-400	Tube	4.00	9.0	7.50	.75	8	0.5	7
3ACI-41-450	Tube	4.50	9.0	7.50	.75	8	0.5	6
3ACI-41-500	Tube	5.00	10.0	8.50	.88	8	0.5	7.5
3ACI-41-556	Tube	5.56	10.0	8.50	.88	8	0.5	7
3ACI-41-600	Tube	6.00	11.0	9.50	.88	8	0.5	8.5
3ACI-41-663	Tube	6.63	11.0	9.50	.88	8	0.5	7.5
3ACI-41-800	Tube	8.00	13.5	11.75	.88	8	0.5	12.5
3ACI-41-863	Tube	8.63	13.5	11.75	.88	8	0.5	11
3ACI-41-1000	Tube	10.00	16.0	14.25	1.0	12	0.5	18
3ACI-41-1075	Tube	10.75	16.0	14.25	1.0	12	0.5	17
3ACI-41-1200	Tube	12.00	19.0	17.00	1.0	12	0.5	21
3ACI-41-1275	Tube	12.75	19.0	17.00	1.0	12	0.5	20
3ACI-41-1400	Tube	14.10	21.0	18.75	1.13	12	0.5	24
3ACI-41-1600	Tube	16.10	23.5	21.25	1.13	16	0.5	28
3ACI-41-1800	Tube	18.10	25.0	22.75	1.25	16	0.5	30
3ACI-41-2000	Tube	20.10	27.5	25.00	1.25	20	0.5	34
3ACI-41-2200	Tube	22.10	29.5	27.25	1.38	20	0.5	36
3ACI-41-2400	Tube	24.10	32.0	29.50	1.38	20	0.5	38
3ACI-41-2600	Tube	26.10	34.3	31.75	1.38	24	0.5	43
3ACI-41-2800	Tube	28.10	36.5	34.00	1.38	28	0.5	49
3ACI-41-3000	Tube	30.10	38.8	36.00	1.38	28	0.5	55



All dimensions are in inches. All weights are in pounds. Weights are approximate. Larger sizes available. Call Product Specialist for details.

World Headquarters  
Stoughton Wisconsin  
United States



1560 Williams Drive  
Stoughton, WI 53589  
Tel: 608-719-1800  
nelsonglobalproducts.com

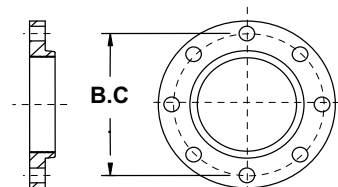
GT Exhaust and Silex are divisions of Nelson Global Products

## 45-46—Flanges

### ANSI Threaded Raised

Part Number	Thread Size	BC Diameter
3ACI-45-150	1.5	3.88
3ACI-45-200	2	4.75
3ACI-45-250	2.5	5.5
3ACI-45-300	3	6
3ACI-45-350	3.5	7
3ACI-45-400	4	7.5
3ACI-45-500	5	8.5
3ACI-45-600	6	9.5
3ACI-45-800	8	11.75

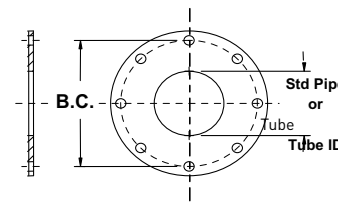
NPT Standard Pipe Threads.



### ANSI Reducing / Increasing

Part Number (Pipe)	Part Number (Tube)	Reducing Size	IPS Size	BC Diameter	WT
3ACI-46-P-430	46-T-430	4 x 3	3	7.5	8
3ACI-46-P-435	46-T-435	4 x 3.5	3.5	7.5	8
3ACI-46-P-535	46-T-535	5 x 3.5	3.5	8.5	9
3ACI-46-P-540	46-T-540	5 x 4	4	8.5	9
3ACI-46-P-640	46-T-640	6 x 4	4	9.5	11
3ACI-46-P-650	46-T-650	6 x 5	5	9.5	10
3ACI-46-P-850	46-T-850	8 x 5	5	11.75	17
3ACI-46-P-860	46-T-860	8 x 6	6	11.75	16
3ACI-46-P-1060	46-T-1060	10 x 6	6	14.25	23
3ACI-46-P-1080	46-T-1080	10 x 8	8	14.25	19
3ACI-46-P-1280	46-T-1280	12 x 8	8	17	32
3ACI-46-P-1210	46-T-1210	12 x 10	10	17	28
3ACI-46-P-1410	46-T-1410	14 x 10	10	18.75	36
3ACI-46-P-1412	46-T-1412	14 x 12	12	18.75	31

Flanges (.50") thick carbon steel plate.



All dimensions are in inches. All weights are in pounds. Weights are approximate. Larger sizes available. Call Product Specialist for details.  
Available in stainless steel. Call Product Specialist for details.

[For further information on quotes, please contact a Product Specialist](#)



Silex: 1-800-387-7818  
Sales/Quote Email: [Silex.Sales@nelsongp.com](mailto:Silex.Sales@nelsongp.com)  
Order Email: [Silex.Orders@nelsongp.com](mailto:Silex.Orders@nelsongp.com)

[silex.com](http://silex.com)

GT Phone: 1-888-894-3726  
Sales/Quote Email: [GTExhaust.Sales@nelsongp.com](mailto:GTExhaust.Sales@nelsongp.com)  
Order Email: [GTExhaust.Orders@nelsongp.com](mailto:GTExhaust.Orders@nelsongp.com)

[gtexhaust.com](http://gtexhaust.com)



## 47-48—Gasket Specifications

### Gaskets - Technical Specifications

Fiber Full Face Gaskets			Temperature Rating: 1800° F
Physical Test Properties	Specification Range	Nominal Test Values	Test Method
Compression @ 34.5 MPa (5000psi)	25-40%	35%	ASTM F-806
Recovery @ 34.5 MPa (5000 psi)	30% Min	34%	ASTM F-806
Ignition Loss (1 hour @ 1500° F)	30% Max	27%	ASTM F-495
Air Aging 70 hrs @ 540° C (1000° F) Thickness Loss	0-10%	6%	ASTM D-573
Air Aging 70 hrs @ 540° C (1000° F) Weight Loss	20% Max	11%	
Fluid Immersions (22 hours @ 78° - 85° F)			
Fluid Resistance ASTM IRM903 Oil - Thickness Change	12-20%	12%	ASTM F-146
Fluid Resistance ASTM IRM903 Oil - Weight Change	70% Max.	58%	ASTM F-146
Fluid Resistance ASTM Fuel B - Thickness Change	10-20%	15%	ASTM F-146
Fluid Resistance ASTM Fuel B - Weight Change	50% Max.	45%	ASTM F-146

GTE/SILEX full face gaskets use a 0.008" ETP (electrolytic tin plate) low carbon steel core. The core is then laminated on two sides with a facing composed of heat resistant vermiculite and ceramic fibers chemically bonded with an NBR binder. This gasket is designed for hot gas applications where extreme heat is present. The fiber facings are mechanically bonded without the use of any adhesives, providing stability and integrity even when exposed to high heat, scrubbing, and vibration. Gasket is asbestos-free. Its color is light brown.

**World Headquarters**  
Stoughton Wisconsin  
United States



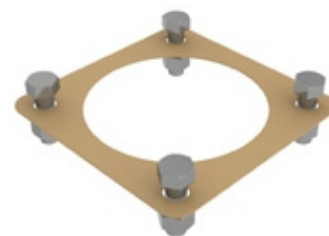
1560 Williams Drive  
Stoughton, WI 53589  
Tel: 608-719-1800  
nelsonglobalproducts.com

*GT Exhaust and Silex are divisions of Nelson Global Products*

## 47—NBG Kits

### Fiber Full Face Engine Gasket

Part Number	Engine	Size	Bolt Diameter	Bolt Length	Bolts/Nuts per Set	Gasket per Set
3ACI-47-CAT-400-FF	CAT	4	.50	2	4	1
3ACI-47-CAT-500-FF	CAT	5	.63	2	4	1
3ACI-47-CAT-600-FF	CAT	6	.63	2	4	1
3ACI-47-CAT-800-FF	CAT	8	.38	2.5	8	1
3ACI-47-CAT-1000-FF	CAT	10	.38	2.5	12	1
3ACI-47-CAT-1200-FF	CAT	12	.38	2.5	12	1
3ACI-47-CAT-1400-FF	CAT	14	.50	2	12	1
3ACI-47-CUM-600-FF	CUM	6	.38	2.5	8	1
3ACI-47-MTU-600-FF	MTU	6	.38	2.5	6	1
3ACI-47-MTU-1000-FF	MTU	10	.50	2	8	1

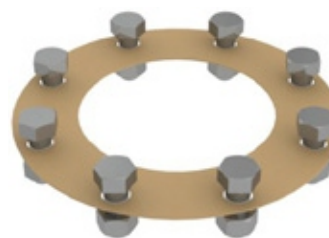


6" CAT flange shown

Grade 2 Zinc plated nuts/bolts. Available in 304 and 316 stainless steel consult Product Specialist for details. Fiber gasket rated up to 1,800° F for continuous use, 2,300° F maximum temperature.

### Fiber Full Face ANSI Gasket

Part Number	Size	Bolt Diameter	Bolt Length	Bolts/Nuts per Set	Gasket per Set
3ACI-47-FF-200	2	.62	2	4	1
3ACI-47-FF-250	2.5	.62	2	4	1
3ACI-47-FF-300	3	.62	2	4	1
3ACI-47-FF-350	3.5	.62	2	8	1
3ACI-47-FF-400	4	.62	2	8	1
3ACI-47-FF-500	5	.75	2	8	1
3ACI-47-FF-600	6	.75	2	8	1
3ACI-47-FF-800	8	.75	2	8	1
3ACI-47-FF-1000	10	.88	2.5	12	1
3ACI-47-FF-1200	12	.88	2.5	12	1
3ACI-47-FF-1400	14	1.0	2.5	12	1
3ACI-47-FF-1600	16	1.0	2.5	16	1
3ACI-47-FF-1800	18	1.13	3	16	1
3ACI-47-FF-2000	20	1.13	3	20	1
3ACI-47-FF-2200	22	1.25	3	20	1
3ACI-47-FF-2400	24	1.25	3	20	1
3ACI-47-FF-2600	26	1.25	3	24	1
3ACI-47-FF-2800	28	1.25	3	28	1
3ACI-47-FF-3000	30	1.25	3	28	1
3ACI-47-FF-3400	34	1.50	3.75	32	1
3ACI-47-FF-3600	36	1.50	3.75	32	1



Grade 2 Zinc plated nuts/bolts. Available in 304 and 316 stainless steel consult Product Specialist for details. Fiber gasket rated up to 1,800° F for continuous use, 2,300° F maximum temperature. Sizes 26" and up gaskets will come in two pieces.

All dimensions are in inches. Larger sizes available. Call Product Specialist for details.  
Available in stainless steel. Call Product Specialist for details.

[For further information on quotes, please contact a Product Specialist](#)



Silex: 1-800-387-7818  
Sales/Quote Email: [Silex.Sales@nelsongp.com](mailto:Silex.Sales@nelsongp.com)  
Order Email: [Silex.Orders@nelsongp.com](mailto:Silex.Orders@nelsongp.com)

[silex.com](http://silex.com)

GT Phone: 1-888-894-3726  
Sales/Quote Email: [GTExhaust.Sales@nelsongp.com](mailto:GTExhaust.Sales@nelsongp.com)  
Order Email: [GTExhaust.Orders@nelsongp.com](mailto:GTExhaust.Orders@nelsongp.com)

[gtexhaust.com](http://gtexhaust.com)

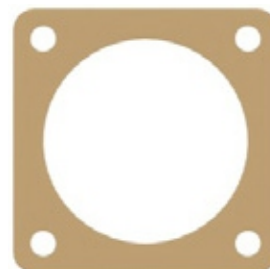


## 48—Gaskets

### Fiber Full Face Engine Gasket

Part Number	Engine	Size	ID	OD	THK
3ACI-48-CAT-400-FF	CAT	4	4.1	5.5	0.0625
3ACI-48-CAT-500-FF	CAT	5	5.1	6.5	0.0625
3ACI-48-CAT-600-FF	CAT	6	6.1	7.8	0.0625
3ACI-48-CAT-800-FF	CAT	8	8.1	11	0.0625
3ACI-48-CAT-1000-FF	CAT	10	10.1	13.5	0.0625
3ACI-48-CAT-1200-FF	CAT	12	12.1	16	0.0625
3ACI-48-CAT-1400-FF	CAT	14	16.93	18.5	0.0625
3ACI-48-CUM-600-FF	CUM	6	6	8	0.0625
3ACI-48-MTU-600-FF	MTU	6	6.1	10.5	0.0625
3ACI-48-MTU-1000-FF	MTU	10	10	13	0.0625

Fiber gasket rated up to 1,800° F for continuous use, 2,300° F maximum temperature.



6" CAT flange shown

### Fiber Full Face ANSI Gasket

Part Number	Size	ID	OD	THK
3ACI-48-FF-400	4	4.5	9	0.0625
3ACI-48-FF-500	5	5.6	10	0.0625
3ACI-48-FF-600	6	6.6	11	0.0625
3ACI-48-FF-800	8	8.6	13.5	0.0625
3ACI-48-FF-1000	10	10.8	16	0.0625
3ACI-48-FF-1200	12	12.8	19	0.0625
3ACI-48-FF-1400	14	14	21	0.0625
3ACI-48-FF-1600	16	16	23.5	0.0625
3ACI-48-FF-1800	18	18	25	0.0625
3ACI-48-FF-2000	20	20	27.5	0.0625
3ACI-48-FF-2200	22	22	29.5	0.0625
3ACI-48-FF-2400	24	24	32	0.0625
3ACI-48-FF-2600	26	26	34.5	0.0625
3ACI-48-FF-2800	28	28	36.5	0.0625
3ACI-48-FF-3000	30	30	38.8	0.0625
3ACI-48-FF-3400	34	34	43.8	0.0625
3ACI-48-FF-3600	36	36	46	0.0625

Fiber gasket rated up to 1,800° F for continuous use, 2,300° F maximum temperature.



All dimensions are in inches. Larger sizes available. Call Product Specialist for details.

**World Headquarters**  
Stoughton Wisconsin  
United States



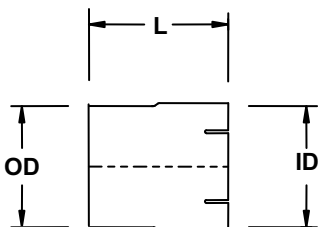
1560 Williams Drive  
Stoughton, WI 53589  
Tel: 608-719-1800  
nelsonglobalproducts.com

GT Exhaust and Silex are divisions of Nelson Global Products

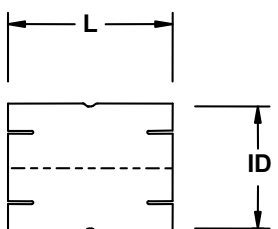


## 49-51—Tube Fittings

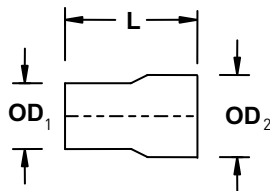
Cuffed One End				(Flex Hose Couplers / Stacks)			
Part Number	Tube Size	L	WT	Part Number	Tube Size	L	WT
3ACI-49-200	2	4.5	.46	3ACI-49-500	5	6	1.58
3ACI-49-250	2.5	4.5	.57	3ACI-49-600	6	6	1.89
3ACI-49-300	3	5	.77	3ACI-49-800	8	8	2.33
3ACI-49-350	3.5	5.5	1.00	3ACI-49-1000	10	8	7
3ACI-49-400	4	6	1.25	3ACI-49-1200	12	10	10



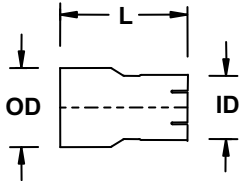
Cuffed Both Ends				(Straight Tube Couplers)			
Part Number	Tube Size	L	WT	Part Number	Tube Size	L	WT
3ACI-50-200	2	4.5	.47	3ACI-50-500	5	6.5	1.69
3ACI-50-250	2.5	4.5	.58	3ACI-50-600	6	6.5	2.02
3ACI-50-300	3	5	.77	3ACI-50-800	8	8.5	4
3ACI-50-350	3.5	5.5	1.01	3ACI-50-1000	10	8.5	5
3ACI-50-400	4	6.5	1.36	3ACI-50-1200	12	8.5	7
3ACI-50-450	4.5	6.5	1.55				



Reducer / Expander				Style 1			
Part Number	Tube Size	L	WT	Part Number	Tube Size	L	WT
3ACI-51-2-225-1	2 X 2.25	6	.65	3ACI-51-35-450-1	3.5 X 4.5	7	1.45
3ACI-51-2-250-1	2 X 2.5	6	.70	3ACI-51-35-500-1	3.5 X 5	8	1.68
3ACI-51-25-300-1	2.5 X 3	6	.86	3ACI-51-4-450-1	4 X 4.5	6.5	1.41
3ACI-51-3-350-1	3 X 3.5	6	1.05	3ACI-51-4-500-1	4 X 5	8	1.88
3ACI-51-3-400-1	3 X 4	6.5	1.17	3ACI-51-5-550-1	5 X 5.5	6.5	1.79
3ACI-51-35-400-1	3.5 X 4	6	1.17	3ACI-51-5-600-1	5 X 6	8	2.29



Reducer / Expander				Style 2			
Part Number	Tube Size	L	WT	Part Number	Tube Size	L	WT
3ACI-51-2-225-2	2 X 2.25	6	.67	3ACI-51-35-450-2	3.5 X 4.5	7	1.49
3ACI-51-2-250-2	2 X 2.5	6	.71	3ACI-51-35-500-2	3.5 X 5	8	1.64
3ACI-51-25-300-2	2.5 X 3	6	.85	3ACI-51-4-450-2	4 X 4.5	6.5	1.50
3ACI-51-3-350-2	3 X 3.5	6	1.00	3ACI-51-4-500-2	4 X 5	8	1.88
3ACI-51-3-400-2	3 X 4	6.5	1.28	3ACI-51-5-550-2	5 X 5.5	6.5	1.90
3ACI-51-35-400-2	3.5 X 4	6	1.17	3ACI-51-5-600-2	5 X 6	8	2.46



Available in stainless steel. Call Product Specialist for details.

For further information on quotes, please contact a Product Specialist



Silex: 1-800-387-7818  
 Sales/Quote Email: [Silex.Sales@nelsongp.com](mailto:Silex.Sales@nelsongp.com)  
 Order Email: [Silex.Orders@nelsongp.com](mailto:Silex.Orders@nelsongp.com)

[silex.com](http://silex.com)

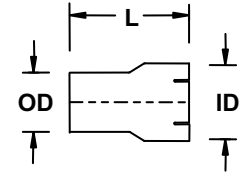
GT Phone: 1-888-894-3726  
 Sales/Quote Email: [GTExhaust.Sales@nelsongp.com](mailto:GTExhaust.Sales@nelsongp.com)  
 Order Email: [GTExhaust.Orders@nelsongp.com](mailto:GTExhaust.Orders@nelsongp.com)

[gtexhaust.com](http://gtexhaust.com)

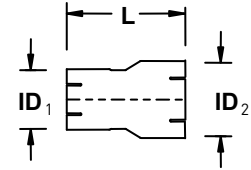


## 51-52—Tube Fittings

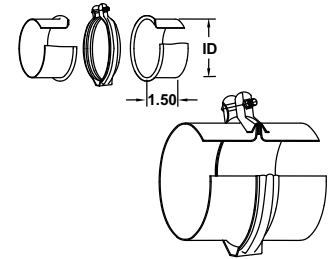
Reducer / Expander				Style 3			
Part Number	Tube Size	L	WT	Part Number	Tube Size	L	WT
3ACI-51-2-225-3	2 X 2.25	6	.66	3ACI-51-35-450-3	3.5 X 4.5	7	1.42
3ACI-51-2-250-3	2 X 2.5	6	.69	3ACI-51-35-500-3	3.5 X 5	8	1.79
3ACI-51-25-300-3	2.5 X 3	6	.84	3ACI-51-4-450-3	4 X 4.5	6.5	1.46
3ACI-51-3-350-3	3 X 3.5	6	10.9	3ACI-51-4-500-3	4 X 5	8	1.93
3ACI-51-3-400-3	3 X 4	6.5	1.18	3ACI-51-5-550-3	5 X 5.5	6.5	1.82
3ACI-51-35-400-3	3.5 X 4	6	1.18	3ACI-51-5-600-3	5 X 6	8	2.69



Reducer / Expander				Style 4			
Part Number	Tube Size	L	WT	Part Number	Tube Size	L	WT
3ACI-51-2-225-4	2 X 2.25	6	.66	3ACI-51-35-450-4	3.5 X 4.5	7	1.46
3ACI-51-2-250-4	2 X 2.5	6	.72	3ACI-51-35-500-4	3.5 X 5	8	1.71
3ACI-51-25-300-4	2.5 X 3	6	.88	3ACI-51-4-450-4	4 X 4.5	6.5	1.48
3ACI-51-3-350-4	3 X 3.5	6	1.03	3ACI-51-4-500-4	4 X 5	8	1.89
3ACI-51-3-400-4	3 X 4	6.5	1.18	3ACI-51-5-550-4	5 X 5.5	6.5	1.79
3ACI-51-35-400-4	3.5 X 4	6	1.19	3ACI-51-5-600-4	5 X 6	8	2.12

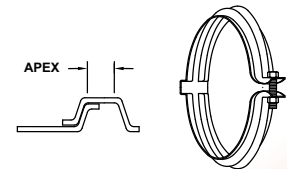


Stack Breaker			(Includes 2 Flanges and Clamp)			
Flange Number	WT	Clamp Number	WT	Set Number (Flanges & Clamps)	WT	ID
3ACI-52-200	.23	52C-200	.17	3ACI-52E-200	.64	2
3ACI-52-250	.29	52C-250	.20	3ACI-52E-250	.77	2.5
3ACI-52-300	.34	52C-300	.22	3ACI-52E-300	.90	3
3ACI-52-350	.40	52C-350	.25	3ACI-52E-350	1.0	3.5
3ACI-52-400	.45	52C-400	.28	3ACI-52E-400	1.2	4
3ACI-52-500	.56	52C-500	.33	3ACI-52E-500	1.5	5
3ACI-52-600	.66	52C-600	.39	3ACI-52E-600	1.7	6



Stack breakers are leak tight. No gaskets are required.

V-Clamp With Hinge				Open Ear Style			
Part Number	Tube Size	Apex	WT	Part Number	Tube Size	Apex	WT
3ACI-52C-200	2.0	.207	.17	3ACI-52C-450	4.5	.207	
3ACI-52C-250	2.5	.207	.20	3ACI-52C-500	5.0	.207	.33
3ACI-52C-300	3.0	.207	.22	3ACI-52C-550	5.5	.207	
3ACI-52C-350	3.5	.207	.25	3ACI-52C-600	6.0	.207	.39
3ACI-52C-400	4.0	.207	.28				



All dimensions are in inches. All weights are in pounds. Weights are approximate. Larger sizes available. Call Product Specialist for details. Available in 304 stainless steel. Call Product Specialist for details.

World Headquarters  
Stoughton Wisconsin  
United States



1560 Williams Drive  
Stoughton, WI 53589  
Tel: 608-719-1800  
nelsonglobalproducts.com

GT Exhaust and Silex are divisions of Nelson Global Products

# 53-55—Elbows

## 90° Elbows

90° Tube Elbow (Long Radius)					Cuffed One End				
Part Number	Size	B/C	R	WT	Part Number	Size	B/C	R	WT
3ACI-53-200	2	6	4	1	3ACI-53-350	3.5	10	7	3.3
3ACI-53-225	2.25	6.5	4.5	1.5	3ACI-53-400	4	11.5	8	4
3ACI-53-250	2.5	7	5	1.5	3ACI-53-450	4.5	13	9	5.5
3ACI-53-275	2.75	8	5.5	1.7	3ACI-53-500	5	14	10	6.5
3ACI-53-300	3	8.5	6	2.3	3ACI-53-600	6	17	12	9.5

90° Tube Elbow (Long Radius)					OD Tube Both Ends				
Part Number	Size	B/C	R	WT	Part Number	Size	B/C	R	WT
3ACI-54-200	2	6	4	1	3ACI-54-350	3.5	10	7	3.3
3ACI-54-225	2.25	6.5	4.5	1.5	3ACI-54-400	4	11.5	8	4
3ACI-54-250	2.5	7	5	1.5	3ACI-54-450	4.5	13	9	5.5
3ACI-54-275	2.75	8	5.5	1.7	3ACI-54-500	5	14	10	6.5
3ACI-54-300	3	8.5	6	2.3	3ACI-54-600	6	17	12	9.5

90° Tube Elbow (Short Radius)					Tangent Cut				
Part Number	Size	B/C	R	WT	Part Number	Size	B/C	R	WT
3ACI-55-200	2	2	2	0.3	3ACI-55-450	4.5	4.5	4.5	1.8
3ACI-55-225	2.25	2.25	2.25	0.4	3ACI-55-500	5	5	5	2
3ACI-55-250	2.5	2.5	2.5	0.5	3ACI-55-600	6	6	6	6
3ACI-55-275	2.75	2.75	2.75	0.6	3ACI-55-800	8	10	10	10
3ACI-55-300	3	3	3	0.7	3ACI-55-1000	10	11	11	12
3ACI-55-350	3.5	3.5	3.5	1	3ACI-55-1200	12	12	12	16
3ACI-55-400	4	4	4	1.3					

90° Mitred Elbow (Short Radius)					Tangent Cut				
Part Number	A	B	C	WT	Part Number	A	B	C	WT
3ACI-55-M-800	8	8	8	10	3ACI-55-M-2000	20	20	20	79
3ACI-55-M-1000	10	10	10	16	3ACI-55-M-2200	22	22	22	95
3ACI-55-M-1200	12	12	12	22	3ACI-55-M-2400	24	24	24	113
3ACI-55-M-1400	14	14	14	30	3ACI-55-M-2600	26	26	26	133
3ACI-55-M-1600	16	16	16	50	3ACI-55-M-2800	28	28	28	154
3ACI-55-M-1800	18	18	18	64	3ACI-55-M-3000	30	30	30	327

All dimensions are in inches. All weights are in pounds. Weights are approximate. Larger sizes available. Call Product Specialist for details.  
Available in stainless steel. Call Product Specialist for details.



Silex: 1-800-387-7818  
Sales/Quote Email: [Silex.Sales@nelsongp.com](mailto:Silex.Sales@nelsongp.com)  
Order Email: [Silex.Orders@nelsongp.com](mailto:Silex.Orders@nelsongp.com)

[silex.com](http://silex.com)

[For further information on quotes, please contact a Product Specialist](#)

GT Phone: 1-888-894-3726  
Sales/Quote Email: [GTExhaust.Sales@nelsongp.com](mailto:GTExhaust.Sales@nelsongp.com)  
Order Email: [GTExhaust.Orders@nelsongp.com](mailto:GTExhaust.Orders@nelsongp.com)

[gtexhaust.com](http://gtexhaust.com)



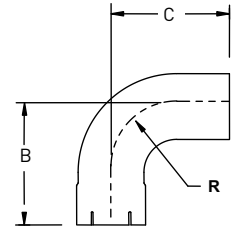
## 56-59—Elbows

### 90° Tube Elbow (Short Radius)

Part Number	Size	B/C	R	WT
3ACI-56-200	2	4	2	0.6
3ACI-56-225	2.25	4	2.25	0.8
3ACI-56-250	2.5	4.5	2.5	1
3ACI-56-275	2.75	5	2.75	1.4
3ACI-56-300	3	5.5	3	1.6
3ACI-56-350	3.5	6.5	3.5	2.2
3ACI-56-400	4	7.5	4	2.8

### Cuffed One End

Part Number	Size	B/C	R	WT
3ACI-56-450	4.5	8	4.5	3.4
3ACI-56-500	5	9	5	4.3
3ACI-56-600	6	11	6	6.3
3ACI-56-800	8	15	10	11.5
3ACI-56-1000	10	19	11	14.5
3ACI-56-1200	12	23	12	18

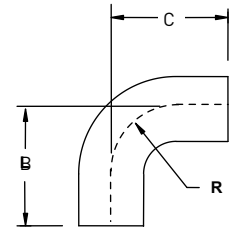


### 90° Tube Elbow (Short Radius)

Part Number	Size	B/C	R	WT
3ACI-57-200	2	4	2	0.7
3ACI-57-225	2.25	4	2.25	0.8
3ACI-57-250	2.5	4.5	2.5	1
3ACI-57-275	2.75	5	2.75	1.3
3ACI-57-300	3	5.5	3	1.5
3ACI-57-350	3.5	6.5	3.5	2.2
3ACI-57-400	4	7.5	4	2.7

### OD Tube Both Ends

Part Number	Size	B/C	R	WT
3ACI-57-450	4.5	8	4.5	3.3
3ACI-57-500	5	9	5	4.3
3ACI-57-600	6	11	6	6.5
3ACI-57-800	8	15	10	12
3ACI-57-1000	10	19	11	15
3ACI-57-1200	12	23	12	19

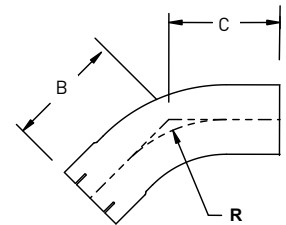


### 45° Tube Elbow (Long Radius)

Part Number	Size	B/C	R	WT
3ACI-58-200	2	4	4	0.8
3ACI-58-225	2.25	4.5	4.5	1
3ACI-58-250	2.5	5	5	1.4
3ACI-58-275	2.75	5.5	5.5	1.6
3ACI-58-300	3	5.5	6	1.7

### Cuffed One End

Part Number	Size	B/C	R	WT
3ACI-58-350	3.5	6.5	7	2.5
3ACI-58-400	4	7	8	2.8
3ACI-58-450	4.5	7.5	9	3.6
3ACI-58-500	5	8	10	4.3
3ACI-58-600	6	10	12	6.7

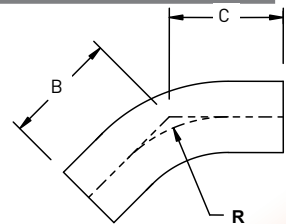


### 45° Tube Elbow (Long Radius)

Part Number	Size	B/C	R	WT
3ACI-59-200	2	4	4	0.8
3ACI-59-225	2.25	4.5	4.5	1.1
3ACI-59-250	2.5	5	5	1.2
3ACI-59-275	2.75	5.5	5.5	1.5
3ACI-59-300	3	5.5	6	1.8

### OD Tube Both Ends

Part Number	Size	B/C	R	WT
3ACI-59-350	3.5	6.5	7	2.3
3ACI-59-400	4	7	8	2.8
3ACI-59-450	4.5	7.5	9	3.6
3ACI-59-500	5	8	10	4.2
3ACI-59-600	6	10	12	6.6



All dimensions are in inches. All weights are in pounds. Weights are approximate. Larger sizes available. Call Product Specialist for details.  
 Available in 304 stainless steel. Call Product Specialist for details.  
 Size 2.75" elbows are non-stock items. Call Product Specialist for details.

World Headquarters  
 Stoughton Wisconsin  
 United States



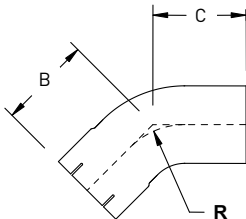
1560 Williams Drive  
 Stoughton, WI 53589  
 Tel: 608-719-1800  
 nelsonglobalproducts.com

GT Exhaust and Silex are divisions of Nelson Global Products

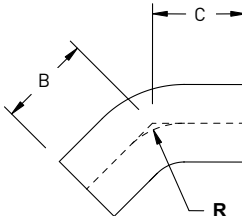
## 60-62—Elbows

### 45° Elbows

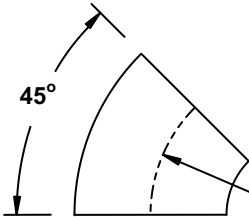
45° Tube Elbow (Short Radius)					Cuffed One End				
Part Number	Size	B/C	R	WT	Part Number	Size	B/C	R	WT
3ACI-60-200	2	3	2	0.6	3ACI-60-350	3.5	4.5	3.5	1.6
3ACI-60-225	2.25	3	2.25	0.7	3ACI-60-400	4	5	4	2.0
3ACI-60-250	2.5	3.5	2.5	0.9	3ACI-60-450	4.5	5.5	4.5	2.7
3ACI-60-275	2.75	3.75	2.75	1.1	3ACI-60-500	5	6	5	3.2
3ACI-60-300	3	4	3	1.2	3ACI-60-600	6	7	6	4.7



45° Tube Elbow (Short Radius)					OD Tube Both Ends				
Part Number	Size	B/C	R	WT	Part Number	Size	B/C	R	WT
3ACI-61-200	2	3	2	0.6	3ACI-61-350	3.5	4.5	3.5	1.7
3ACI-61-225	2.25	3	2.25	0.7	3ACI-61-400	4	5	4	2.1
3ACI-61-250	2.5	3.5	2.5	0.9	3ACI-61-450	4.5	5.5	4.5	2.7
3ACI-61-275	2.75	3.75	2.75	1.1	3ACI-61-500	5	6	5	3.2
3ACI-61-300	3	4	3	1.2	3ACI-61-600	6	7	6	4.6



45° Tube Elbow (Short Radius)				Tangent Cut			
Part Number	Size	R	WT	Part Number	Size	R	WT
3ACI-62-200	2	2	.2	3ACI-62-450	4.5	4.5	.8
3ACI-62-225	2.25	2.25	.2	3ACI-62-500	5	5	1.0
3ACI-62-250	2.5	2.5	.3	3ACI-62-600	6	6	1.5
3ACI-62-275	2.75	2.75	.3	3ACI-62-800	8	10	2.6
3ACI-62-300	3	3	.4	3ACI-62-1000	10	11	4.1
3ACI-62-350	3.5	3.5	.5	3ACI-62-1200	12	12	6.0
3ACI-62-400	4	4	.7				



All dimensions are in inches. All weights are in pounds. Weights are approximate. Larger sizes available. Call Product Specialist for details.  
 Available in 304 stainless steel. Call Product Specialist for details.  
 Size 2.75" elbows are non-stock items. Call Product Specialist for details.

[For further information on quotes, please contact a Product Specialist](#)



Silex: 1-800-387-7818  
 Sales/Quote Email: [Silex.Sales@nelsongp.com](mailto:Silex.Sales@nelsongp.com)  
 Order Email: [Silex.Orders@nelsongp.com](mailto:Silex.Orders@nelsongp.com)

[silex.com](http://silex.com)

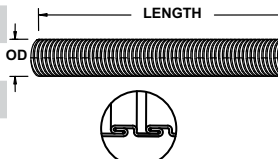
GT Phone: 1-888-894-3726  
 Sales/Quote Email: [GTExhaust.Sales@nelsongp.com](mailto:GTExhaust.Sales@nelsongp.com)  
 Order Email: [GTExhaust.Orders@nelsongp.com](mailto:GTExhaust.Orders@nelsongp.com)

[gtexhaust.com](http://gtexhaust.com)

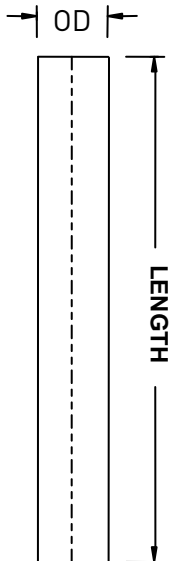


## 63-65—Flex to Tubing

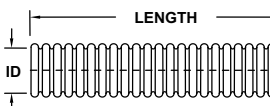
Interlocking Flex Hose				304 Stainless Steel			
Part Number	ID	OD	WT / FT	Part Number	ID	OD	WT / FT
3ACI-63-200-S	2	2.16	1.5	3ACI-63-500-S	5	5.16	3.1
3ACI-63-250-S	2.5	2.66	1.6	3ACI-63-600-S	6	6.16	3.7
3ACI-63-300-S	3	3.16	1.8	3ACI-63-800-S	8	8.16	4.6
3ACI-63-350-S	3.5	3.66	1.9	3ACI-63-1000-S	10	10.16	6.2
3ACI-63-400-S	4	4.16	2.5				



Tubing				Carbon Steel			
Part Number	OD	Wall Thk	WT / FT	Part Number	OD	Wall Thk	WT / FT
3ACI-64-150	1.5	.065	1	3ACI-64-800	8	.104	9
3ACI-64-200	2	.065	1.3	3ACI-64-1000	10	.104	14.3
3ACI-64-225	2.25	.065	1.5	3ACI-64-1200	12	.104	15
3ACI-64-250	2.5	.065	1.7	3ACI-64-1400	14	.104	16.2
3ACI-64-275	2.75	.065	1.9	3ACI-64-1600	16	.104	18.5
3ACI-64-300	3	.065	2	3ACI-64-1800	18	.1345	Call
3ACI-64-350	3.5	.065	2.4	3ACI-64-2000	20	.1345	Call
3ACI-64-400	4	.065	2.7	3ACI-64-2200	22	.1345	Call
3ACI-64-450	4.5	.065	3.1	3ACI-64-2400	24	.1345	Call
3ACI-64-500	5	.065	3.4	3ACI-64-2600	26	.1345	Call
3ACI-64-550	5.5	.065	3.4	3ACI-64-2800	28	.1345	Call
3ACI-64-600	6	.083	5	3ACI-64-3000	30	.1345	Call



Corrugated Flex Hose			321 Stainless Steel		
Part Number	ID	OD	Part Number	ID	OD
3ACI-65-150-S	1.5	2.19	3ACI-65-500-S	5	5.87
3ACI-65-200-S	2	2.75	3ACI-65-600-S	6	6.94
3ACI-65-250-S	2.5	3.17	3ACI-65-800-S	8	9
3ACI-65-300-S	3	3.75	3ACI-65-1000-S	10	11
3ACI-65-350-S	3.5	4.38	3ACI-65-1200-S	12	13
3ACI-65-400-S	4	4.82			



All dimensions are in inches. All weights are in pounds. Weights are approximate. Larger sizes available. Call Product Specialist for details.  
Available in stainless steel. Call Product Specialist for details.

World Headquarters  
Stoughton Wisconsin  
United States



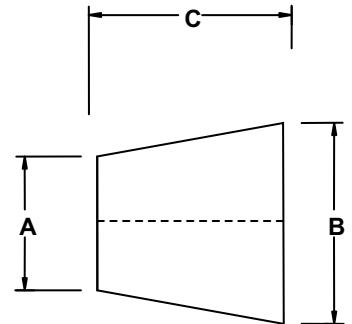
1560 Williams Drive  
Stoughton, WI 53589  
Tel: 608-719-1800  
nelsonglobalproducts.com

GT Exhaust and Silex are divisions of Nelson Global Products

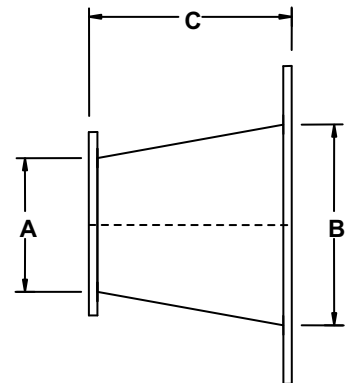
## 67—Cones

### Concentric Expansion Connectors

No Flanges			
Part Number	A	B	C
3ACI-67-00-6080	6	8	9.5
3ACI-67-00-6010	6	10	11.5
3ACI-67-00-8010	8	10	11.5
3ACI-67-00-8012	8	12	11.5
3ACI-67-00-1012	10	12	11.5
3ACI-67-00-1014	10	14	11.5
3ACI-67-00-1214	12	14	11.5
3ACI-67-00-1216	12	16	11.5
3ACI-67-00-1416	14	16	13.5
3ACI-67-00-1418	14	18	13.5
3ACI-67-00-1618	16	18	15.5
3ACI-67-00-1620	16	20	15.5
3ACI-67-00-1820	18	20	15.5
3ACI-67-00-1822	18	22	15.5
3ACI-67-00-2022	20	22	15.5
3ACI-67-00-2024	20	24	15.5
3ACI-67-00-2224	22	24	15.5
3ACI-67-00-2226	22	26	15.5



Flanged Both Ends			
Part Number	A	B	C
3ACI-67-11-6080	6	8	10
3ACI-67-11-6010	6	10	12
3ACI-67-11-8010	8	10	12
3ACI-67-11-8012	8	12	12
3ACI-67-11-1012	10	12	12
3ACI-67-11-1014	10	14	12
3ACI-67-11-1214	12	14	12
3ACI-67-11-1216	12	16	12
3ACI-67-11-1416	14	16	14
3ACI-67-11-1418	14	18	14
3ACI-67-11-1618	16	18	16
3ACI-67-11-1620	16	20	16
3ACI-67-11-1820	18	20	16
3ACI-67-11-1822	18	22	16
3ACI-67-11-2022	20	22	16
3ACI-67-11-2024	20	24	16
3ACI-67-11-2224	22	24	16
3ACI-67-11-2226	22	26	16



All ANSI flanges may be replaced with a standard Caterpillar, Cummins, or MTU engine flanges.

[For further information on quotes, please contact a Product Specialist](#)



Silex: 1-800-387-7818  
 Sales/Quote Email: [Silex.Sales@nelsongp.com](mailto:Silex.Sales@nelsongp.com)  
 Order Email: [Silex.Orders@nelsongp.com](mailto:Silex.Orders@nelsongp.com)

[silex.com](http://silex.com)

GT Phone: 1-888-894-3726  
 Sales/Quote Email: [GTExhaust.Sales@nelsongp.com](mailto:GTExhaust.Sales@nelsongp.com)  
 Order Email: [GTExhaust.Orders@nelsongp.com](mailto:GTExhaust.Orders@nelsongp.com)

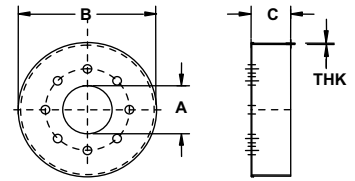
[gtexhaust.com](http://gtexhaust.com)



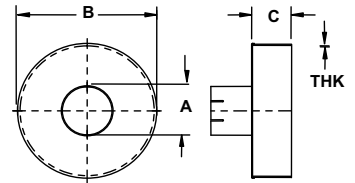
## 80-82—Rainguards to Drain Cocks

### Rain Guards & Drain Cocks

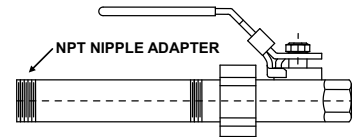
Rain Guards		ANSI Flange Style		
Part Number	A	B	C	THK
3ACI-80-400	4	15	4	.083
3ACI-80-500	5	15	4	.083
3ACI-80-600	6	15	4	.083
3ACI-80-800	8	18	4	.083
3ACI-80-1000	10	20	4	.083
3ACI-80-1200	12	24	4	.083
3ACI-80-1400	14	24	4	.083



Rain Guards		ID Cuff Style		
Part Number	A	B	C	THK
3ACI-81-400	4	15	4	.083
3ACI-81-450	4.5	15	4	.083
3ACI-81-500	5	15	4	.083
3ACI-81-556	5.56	15	4	.083
3ACI-81-600	6	15	4	.083
3ACI-81-663	6.63	15	4	.083
3ACI-81-800	8	18	4	.083
3ACI-81-863	8.63	18	4	.083
3ACI-81-1000	10	20	4	.083
3ACI-81-1075	10.75	20	4	.083
3ACI-81-1200	12	24	4	.083
3ACI-81-1275	12.75	24	4	.083
3ACI-81-1400	14	24	4	.083



Drain Cocks		
Part Number	Port	Pipe Size
3ACI-82-0500	Full	0.50
3ACI-82-0750	Standard	0.75
3ACI-82-0100	Standard	1.00
3ACI-82-0150	Standard	1.50



Bronze ball valve (union x NPT female). Ball is chrome plated brass.

Latch lock handle allows padlock.

Includes 4" long NPT male nipple adapter.

World Headquarters  
Stoughton Wisconsin  
United States



1560 Williams Drive  
Stoughton, WI 53589  
Tel: 608-719-1800  
nelsonglobalproducts.com

GT Exhaust and Silex are divisions of Nelson Global Products



# 103-106—Wrap Specifications

## Velcro Thermal Insulation Wrap-Technical Specifications

<b>Custom Designed Flexible, Removable Insulation Blankets</b>		<b>Temperature Rating: 1100° F (593° C)</b>
<b>Properties</b>		
Temperature Range	20° F - 1100° F process temperatures	
Thickness	Approximately 1.00"	
Insulation	1" thick, 9 lb. density insulation composed of 100% Type "E" fibers	
Inner Jacket	20 oz. vermiculite coated thermal cloth	
Outer Jacket	17 oz. gray or blue Teflon coated thermal cloth	
Construction	10-ply 304 stainless steel thread	
Attachments	High-temp Velcro strips and belts with stainless steel double D-Rings	
Tags	Stainless Steel	
<b>Physical Properties</b>		
Surface Temperature	Used on surfaces up to 1100° F	
Fire Resistance	Incombustible	
Density (approximate)	9 lbs. / cubic ft.	
Loss in Weight @ 1200° F	Up to 2%	
Moisture Absorption	Negligible	
Softening Point	1500° F	
Strain Point	1100° F	
Annealing Point	1200° F	
<b>Thermal Conductivity - K value at 11 lbs. / cubic ft. (per ASTM C 177)</b>		
<b>Mean Temperature</b>	<b>K btu-in / sq ft / hr / ° F</b>	
300° F	0.40	
500° F	0.50	
700° F	0.65	
<b>Specification Compliance</b>		
MIL-1-24244		
NRC-136		
NFPA 255 & 110		
UL 492 (Self Extinguishing)		
US Coast Guard Certificate 164.009/94/0		

Thermal wrap provides a tough, durable exterior that can be custom fitted for nearly any product or accessory. The wrap is composed of 1" thick, 9 pound insulation composed of 100% Type "E" fibers, fabricated in a mat form free of asbestos. The wrap is easy to install, and significantly reduces surface temperature. The color is typically gray.

Custom sizes and applications available. Call Product Specialist for details.  
 Wrap available for all GTE and Silex silencers. Refer to silencer section of catalog for information and pricing.  
 Velcro Thermal wraps can be used outside. Contact Product Specialist for details.

[For further information on quotes, please contact a Product Specialist](#)



Silex: 1-800-387-7818  
 Sales/Quote Email: [Silex.Sales@nelsongp.com](mailto:Silex.Sales@nelsongp.com)  
 Order Email: [Silex.Orders@nelsongp.com](mailto:Silex.Orders@nelsongp.com)

**silex.com**

GT Phone: 1-888-894-3726  
 Sales/Quote Email: [GTExhaust.Sales@nelsongp.com](mailto:GTExhaust.Sales@nelsongp.com)  
 Order Email: [GTExhaust.Orders@nelsongp.com](mailto:GTExhaust.Orders@nelsongp.com)

**gtexhaust.com**



## 103-104—Accessory Wrap

Tubing			Wrap		
Part Number	Tube/Pipe Size	Application	Part Number	Tube/Pipe Size	Application
3ACI-103-300-WV	3	Tube	3ACI-103-1200-WV	12	Tube
3ACI-103-350-WV	3.5	Tube & 3" Pipe	3ACI-103-1275-WV	12.75	Pipe
3ACI-103-400-WV	4	Tube & 3.5" Pipe	3ACI-103-1400-WV	14	Pipe
3ACI-103-450-WV	4.5	Pipe	3ACI-103-1600-WV	16	Pipe
3ACI-103-500-WV	5	Tube	3ACI-103-1800-WV	18	Pipe
3ACI-103-556-WV	5.56	Pipe	3ACI-103-2000-WV	20	Pipe
3ACI-103-600-WV	6	Tube	3ACI-103-2200-WV	22	Pipe
3ACI-103-663-WV	6.63	Pipe	3ACI-103-2400-WV	24	Pipe
3ACI-103-800-WV	8	Tube	3ACI-103-2600-WV	26	Pipe
3ACI-103-863-WV	8.63	Pipe	3ACI-103-2800-WV	28	Pipe
3ACI-103-1000-WV	10	Tube	3ACI-103-3000-WV	30	Pipe
3ACI-103-1075-WV	10.75	Pipe	3ACI-103-3600-WV	36	Pipe

Flex		Wrap	
Part Number	Size ID	Part Number	Size ID
3ACI-104-F-300-WV	3	3ACI-104-F-600-WV	6
3ACI-104-F-350-WV	3.5	3ACI-104-F-800-WV	8
3ACI-104-F-400-WV	4	3ACI-104-F-1000-WV	10
3ACI-104-F-500-WV	5	3ACI-104-F-1200-WV	12

Bellows		Wrap	
Part Number	Size ID	Part Number	Size ID
3ACI-104-B-300-WV	3	3ACI-104-B-1600-WV	16
3ACI-104-B-350-WV	3.5	3ACI-104-B-1800-WV	18
3ACI-104-B-400-WV	4	3ACI-104-B-2000-WV	20
3ACI-104-B-500-WV	5	3ACI-104-B-2200-WV	22
3ACI-104-B-600-WV	6	3ACI-104-B-2400-WV	24
3ACI-104-B-800-WV	8	3ACI-104-B-2600-WV	26
3ACI-104-B-1000-WV	10	3ACI-104-B-2800-WV	28
3ACI-104-B-1200-WV	12	3ACI-104-B-3000-WV	30
3ACI-104-B-1400-WV	14	3ACI-104-B-3600-WV	36

WV = Wrap, Velcro and Straps  
 All dimensions are in inches. Larger sizes available. Call Product Specialist for details.

World Headquarters  
 Stoughton Wisconsin  
 United States



1560 Williams Drive  
 Stoughton, WI 53589  
 Tel: 608-719-1800  
 nelsonglobalproducts.com

GT Exhaust and Silex are divisions of Nelson Global Products

## 105—Accessory Wrap

### 45° Tube Elbow (Long Radius)

### Wrap

Part Number	Size	Application	Part Number	Size	Application
3ACI-105-45-300-LRV	3	Tube	3ACI-105-45-500-LRV	5	Tube
3ACI-105-45-350-LRV	3.5	Tube & Pipe	3ACI-105-45-556-LRV	5.56	Pipe
3ACI-105-45-400-LRV	4	Tube	3ACI-105-45-600-LRV	6	Tube
3ACI-105-45-450-LRV	4.5	Pipe			

### 45° Tube Elbow (Short Radius- Tangent Cut)

### Wrap

Part Number	Size	Application	Part Number	Size	Application
3ACI-105-45-300-SRV	3	Tube	3ACI-105-45-663-SRV	6.63	Pipe
3ACI-105-45-350-SRV	3.5	Tube & Pipe	3ACI-105-45-800-SRV	8	Tube
3ACI-105-45-400-SRV	4	Tube	3ACI-105-45-863-SRV	8.63	Pipe
3ACI-105-45-450-SRV	4.5	Pipe	3ACI-105-45-1000-SRV	10	Tube
3ACI-105-45-500-SRV	5	Tube	3ACI-105-45-1075-SRV	10.75	Pipe
3ACI-105-45-556-SRV	5.56	Pipe	3ACI-105-45-1200-SRV	12	Tube
3ACI-105-45-600-SRV	6	Tube	3ACI-105-45-1275-SRV	12.75	Pipe

### 90° Tube Elbow (Long Radius)

### Wrap

Part Number	Size	Application	Part Number	Size	Application
3ACI-105-300-LRV	3	Tube	3ACI-105-500-LRV	5	Tube
3ACI-105-350-LRV	3.5	Tube & Pipe	3ACI-105-556-LRV	5.56	Pipe
3ACI-105-400-LRV	4	Tube	3ACI-105-600-LRV	6	Tube
3ACI-105-450-LRV	4.5	Pipe			

### 90° Tube Elbow (Short Radius- Tangent Cut)

### Wrap

Part Number	Size	Application	Part Number	Size	Application
3ACI-105-300-SRV	3	Tube	3ACI-105-663-SRV	6.63	Pipe
3ACI-105-350-SRV	3.5	Tube & Pipe	3ACI-105-800-SRV	8	Tube
3ACI-105-400-SRV	4	Tube	3ACI-105-863-SRV	8.63	Pipe
3ACI-105-450-SRV	4.5	Pipe	3ACI-105-1000-SRV	10	Tube
3ACI-105-500-SRV	5	Tube	3ACI-105-1075-SRV	10.75	Pipe
3ACI-105-556-SRV	5.56	Pipe	3ACI-105-1200-SRV	12	Tube
3ACI-105-600-SRV	6	Tube	3ACI-105-1275-SRV	12.75	Pipe

All dimensions are in inches. Larger sizes available. Call Product Specialist for details.  
All Elbow wraps are for tangent cut elbows. Consult with Product Specialist for elbow wraps with extended legs.

[For further information on quotes, please contact a Product Specialist](#)



Silex: 1-800-387-7818  
Sales/Quote Email: [Silex.Sales@nelsongp.com](mailto:Silex.Sales@nelsongp.com)  
Order Email: [Silex.Orders@nelsongp.com](mailto:Silex.Orders@nelsongp.com)

[silex.com](http://silex.com)

GT Phone: 1-888-894-3726  
Sales/Quote Email: [GTExhaust.Sales@nelsongp.com](mailto:GTExhaust.Sales@nelsongp.com)  
Order Email: [GTExhaust.Orders@nelsongp.com](mailto:GTExhaust.Orders@nelsongp.com)

[gtexhaust.com](http://gtexhaust.com)



## 106—Accessory Wrap

### Mitred Elbow & Flange Thermal Wrap

90° Mitred Elbow (Short Radius)			Wrap		
Part Number	Size	Application	Part Number	Size	Application
3ACI-105-M-800-SRV	8	Tube	3ACI-105-M-2000-SRV	20	Tube
3ACI-105-M-1000-SRV	10	Tube	3ACI-105-M-2200-SRV	22	Tube
3ACI-105-M-1200-SRV	12	Tube	3ACI-105-M-2400-SRV	24	Tube
3ACI-105-M-1400-SRV	14	Tube	3ACI-105-M-2600-SRV	26	Tube
3ACI-105-M-1600-SRV	16	Tube	3ACI-105-M-2800-SRV	28	Tube
3ACI-105-M-1800-SRV	18	Tube	3ACI-105-M-3000-SRV	30	Tube

ANSI Flange		Wrap	
Part Number	Nominal Size	Part Number	Nominal Size
3ACI-106-300-WV	3	3ACI-106-1800-WV	18
3ACI-106-350-WV	3.5	3ACI-106-2000-WV	20
3ACI-106-400-WV	4	3ACI-106-2200-WV	22
3ACI-106-500-WV	5	3ACI-106-2400-WV	24
3ACI-106-600-WV	6	3ACI-106-2600-WV	26
3ACI-106-800-WV	8	3ACI-106-2800-WV	28
3ACI-106-1000-WV	10	3ACI-106-3000-WV	30
3ACI-106-1200-WV	12	3ACI-106-3200-WV	32
3ACI-106-1400-WV	14	3ACI-106-3400-WV	34
3ACI-106-1600-WV	16	3ACI-106-3600-WV	36

The wrap will cover 2 flanges bolted together.

All dimensions are in inches. Larger sizes available. Call Product Specialist for details.

**World Headquarters**  
Stoughton Wisconsin  
United States



1560 Williams Drive  
Stoughton, WI 53589  
Tel: 608-719-1800  
nelsonglobalproducts.com

GT Exhaust and Silex are divisions of Nelson Global Products

## Accessory Part Number Assignments

### Understanding Flex/Bellows part number structure

- A. Standard part numbering scheme
- B. Creating flex/bellows part number with engine flange O/E
- C. Creating flex/bellows part number with Reducing/Increasing ANSI flange O/E
- D. Creating flex/bellows part number with engine flange O/E and Reducing/Increasing ANSI flange O/E
- E. Creating flex/bellows part number that is stainless steel.
- F. Creating a flex/bellows part number when part is custom

### A. Standard part numbering scheme

Example:

You need a 5" Flex connector with 5" ANSI flanges both ends, 18" overall length, or a 10-11-518

Part number = 3ACI-10-11-518

#### First set of Numbers:

Indicates what the part is. In this case "10" is a flex connector. All other accessories follow suit.

Example:

09=Braided flex connector

10=Flex connector

11=Bellows connector

#### Third Number(s):

Reflects Nominal size of flex and the size of the connections on each end for standard parts. Does not necessarily reflect the connection size for custom flexes. For this case 5" would have 5" flex and 5" ANSI flanges both ends since the part is standard.

3ACI-10-11-518

#### Second set of Numbers:

Indicates the connection type at each end of the flex. Each number has a corresponding connection type.

1=Flange

1F=Floating flange o/e

2=Male pipe thread

2P=Plain pipe end

3=Female pipe thread

4=Slotted I.D. cuff

4P=Plain O.D. tube

6=Elbow (not a connection but part of the second set of numbers.)

7=Flared flange

8=Machined turbo flange

If you need one end floating it would be: 3ACI-10-1F1-518

\*These numbers start with the inlet connection first. i.e.

10-41...

10-31...

10-43...

#### Fourth Number:

Overall length in inches. For this application the flex would be 18" in length. Use decimal places on custom length flexes.



Silex: 1-800-387-7818  
 Sales/Quote Email: [Silex.Sales@nelsongp.com](mailto:Silex.Sales@nelsongp.com)  
 Order Email: [Silex.Orders@nelsongp.com](mailto:Silex.Orders@nelsongp.com)

[silex.com](http://silex.com)

[For further information on quotes, please contact a Product Specialist](#)

GT Phone: 1-888-894-3726  
 Sales/Quote Email: [GTExhaust.Sales@nelsongp.com](mailto:GTExhaust.Sales@nelsongp.com)  
 Order Email: [GTExhaust.Orders@nelsongp.com](mailto:GTExhaust.Orders@nelsongp.com)

[gtexhaust.com](http://gtexhaust.com)



# Accessory Part Number Assignments

## Understanding Flex/Bellows Part Numbers

### B. Creating flex/bellows Part number with Engine flange O/E

Example:

You need a 8" Flex connector with floating 8" Caterpillar flange one end and 8" ANSI flange one end, 18" overall length.  
Part number = 3ACI-10-1F1-818-CAT

**First set of Numbers:**

Indicates the part is a flex connector.  
See "A" for more info.

**Third Number(s):**

Indicates 8" nominal size of flex.

**Fourth Number:**

Indicates overall length requested.  
In this case, 18" OAL.



**Second set of Numbers:**

Connections—First number implies floating flange because it has an "F" attached to it.  
Second number implies the flange.

**Last set of Letters:**

Engine flange designator. Three letter indicators will be added to end of flex/bellows part number when there is an engine flange o/e.

**Engine designations:**

- CAT=Caterpillar flange
- CUM=Cummins flange
- MTU=MTU flange
- DET=Detroit diesel flange

Note: When engine flanges are on both ends add 2x to the three letter designation.

Example: 3ACI-10-1F1-818-CAT2X

Note: If engine flange is same size as nominal flex size then no drawing number is needed. If engine flange is different size than nominal size of flex then drawing number will be required at end of part number.

## Accessory Part Number Assignments

### Understanding Flex/Bellows Part Numbers

#### C. Creating flex/bellows part number with Reducing/Increasing ANSI flange O/E

Example:

You need a 8" Flex connector with floating 8" ANSI flange one end and 10" x 8" ANSI flange one end, 18" overall length.  
Part number = 3ACI-10-1F1-818-1080

**First set of Numbers:**

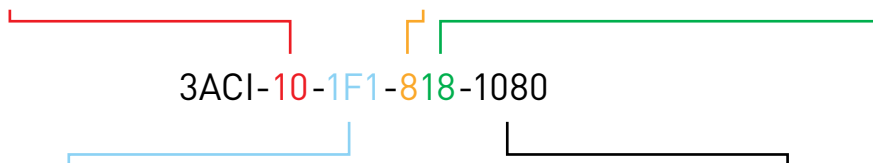
Indicates the part is a flex connector.  
See "A" for more info.

**Third Number(s):**

Indicates 8" nominal size of flex.

**Fourth Number:**

Indicates overall length requested.  
In this case, 18" OAL.



3ACI-10-1F1-818-1080

**Second set of Numbers:**

Connections—First number implies floating flange because it has an "F" attached to it.  
Second number implies the flange.

**Last set of Numbers:**

Reducing Increasing flange indicator. When reducing increasing flange is needed on one end, add reducing increasing flange indicator to end of flex part number. Larger number leads and smaller number follows. This number follows the pattern of the reducing increase flange part numbers in the catalog.

Example:

14"x10" increasing flange=1410  
6"x5" increasing flange=650

[For further information on quotes, please contact a Product Specialist](#)



Silex: 1-800-387-7818  
Sales/Quote Email: [Silex.Sales@nelsongp.com](mailto:Silex.Sales@nelsongp.com)  
Order Email: [Silex.Orders@nelsongp.com](mailto:Silex.Orders@nelsongp.com)

[silex.com](http://silex.com)

GT Phone: 1-888-894-3726  
Sales/Quote Email: [GTExhaust.Sales@nelsongp.com](mailto:GTExhaust.Sales@nelsongp.com)  
Order Email: [GTExhaust.Orders@nelsongp.com](mailto:GTExhaust.Orders@nelsongp.com)

[gtexhaust.com](http://gtexhaust.com)



## Accessory Part Number Assignments

Understanding Flex/Bellows Part Numbers

### D. Creating flex/bellows part number with engine flange O/E and Reducing/Increasing ANSI flange o/e

Example:

You need a 8" Flex connector with floating 8" CAT flange one end and 10" x 8" ANSI flange one end, 18" overall length.  
Part number = 3ACI-10-1F1-818-CAT1080

**First set of Numbers:**

Indicates the part is a flex connector.  
See "A" for more info.

**Third Number(s):**

Indicates 8" nominal size of flex.

**Fourth Number:**

Indicates overall length requested.  
In this case, 18" OAL.



**Second set of Numbers:**

Connections—First number implies floating flange because it has an "F" attached to it. Second number implies the flange.

**Fifth set of Letters:**

Engine flange designator. When Engine flange and reducing increasing flange are part of the same part number the engine flange designator always comes first. See Section B for more information on Engine flange designators.

**Last set of Numbers:**

Reducing Increasing flange indicator. Reducing/Increasing flange Indicator always follows engine flange designation. See Section C for more information on reducing increasing flange indicators.



# Accessory Part Number Assignments

## Understanding Flex/Bellows Part Numbers

### E. Creating flex/bellows part number that is stainless steel

Example:

You need a 8" Flex connector with floating 8" CAT flange one end and 10" x 8" ANSI flange one end, 18" overall length and the unit needs to be 304 stainless steel.

Part number = 3ACI-10-1F1-818-CAT1080-S304

**First set of Numbers:**

Indicates the part is a flex connector. See "A" for more info.

**Third Number(s):**

Indicates 8" nominal size of flex.

**Fourth Number:**

Indicates overall length requested. In this case, 18" OAL.

**Last set of Numbers:**

Indicates that the part is 100% 304 stainless steel. Indicating stainless steel in the part number means that all other parts other than the flex hose will be stainless steel. Flex hose will always be stainless steel, typically 321 stainless steel.



**Second set of Numbers:**

Connections—First number implies floating flange because it has an "F" attached to it. Second number implies the flange.

**Fifth set of Letters:**

Engine flange designator. When Engine flange and reducing increasing flange are part of the same part number the engine flange designator always comes first. See Section B for more information on Engine flange designators.

**Sixth set of Numbers:**

Reducing Increasing flange indicator. Reducing/Increasing flange Indicator always follows engine flange designation. See Section C for more information on reducing increasing flange indicators.

[For further information on quotes, please contact a Product Specialist](#)



Silex: 1-800-387-7818  
Sales/Quote Email: [Silex.Sales@nelsongp.com](mailto:Silex.Sales@nelsongp.com)  
Order Email: [Silex.Orders@nelsongp.com](mailto:Silex.Orders@nelsongp.com)

[silex.com](http://silex.com)

GT Phone: 1-888-894-3726  
Sales/Quote Email: [GTExhaust.Sales@nelsongp.com](mailto:GTExhaust.Sales@nelsongp.com)  
Order Email: [GTExhaust.Orders@nelsongp.com](mailto:GTExhaust.Orders@nelsongp.com)

[gtexhaust.com](http://gtexhaust.com)



# Accessory Part Number Assignments

## Pricing a Custom Flex Connector

### Pricing a custom flex connector.\*

\*Note: These examples should cover most situations you come across. If in doubt consult Product Specialist.

- A. Substituting Reducing/Increasing flange one end.
- B. Substituting a Standard Engine plate flange for an ANSI flange, one end of a flex connector.
- C. Adding/subtracting length to flex connector
- D. 100% Stainless steel flex connector.
- E. Plain tube or Plain Pipe ends
- F. Adding length to a leg of a flex connector with an elbow.
- G. Pricing flex pieces that have a transition in size. Cones and Donuts

### A. Substituting Reducing/Increasing flange one end.

Problem/Need: You need to price a 10" flex with flanges both ends but instead of having the standard 10" ANSI flanges both ends, one end floating, you need a 12" x 10" increasing flange o/e, 18" long. How do I price that?

(Henceforth, all pricing is not actual pricing from catalog but is strictly for illustration purposes. Please consult most current version of GTE or Silex pricing guide.)

To solve: In essence we are removing a standard flange from one end, in this case a 10" ANSI flange, (3ACI-41-1000) and substituting it with a 12" x 10" increasing flange (3ACI-46-T-1210). To solve we need to have the pricing for all three pieces.

- (1) The base flex price : 3ACI-10-1F1-1018 = \$536 LIST
- (2) The 10" ANSI flange price: 3ACI-41-1000 = \$134 LIST
- (3) The 12" x 10" Increasing ANSI flange price : 3ACI-46-T-1210 = \$196 LIST

Second, take the base price of the flex and subtract the 10" ANSI flange price from the price of the flex.

\$536	(Standard 3ACI-10-1F1-1018)
<u>- \$134</u>	<u>(3ACI-41-1000)</u>
\$402	Subtotal

Next, take the subtotal and add the 12" x 10" increasing flange price to the subtotal.

\$402	Subtotal
<u>+ \$196</u>	<u>3ACI-46-T-1210</u>
\$598	New price of flex

This technique will work whenever you need a reducing /increasing flange on one end of a flex connector. If the desired reducing/increasing flange price is not in the catalog please contact the Product Specialist for pricing.

## Accessory Part Number Assignments

### Understanding Flex/Bellows Part Numbers

#### F. Creating a flex/bellows part number when part is custom

Example:

You need a 6" flex connector with a floating 5" NPT one end and a 6" ANSI flange o/e, 15.38" in length.

Part number = 3ACI-10-21-615.38-xxxxx

Drawing number that is assigned by Product Specialist.

**First set of Numbers:**

Indicates the part is a flex connector. See "A" for more info.

**Third Number(s):**

Indicates 6" nominal size of flex.

**Fourth Number:**

Indicates overall length requested. In this case, 15.38" OAL.



**Second set of Numbers:**

Connections—First number implies the NPT. Second number implies flange.

**Last set of Numbers:**

Drawing number will be inserted here to indicate the custom nature of the part. A Product Specialist will assign this number if part is new or it will have been assigned if part has been requested before.

\*Other options specified by the drawing number.

- Special Engine flange o/e
- Custom flange o/e
- Any connector that is different than nominal size.

Example:

3ACI-10-44-618 w/5: I.D. cuff o/e

- The use of any piece to transition from one size to another, i.e. the use of cones or donuts in a flex or bellows connector
- Extra sensor ports added to flex or bellows
- Multiple elbows in part
- Offset in flex or bellows
- Anything custom about a flex or bellows

If no drawing number is indicated in part number the rule is that the connection type on both ends will come standard in the nominal size of the flex bellows. If something is custom contact a Product Specialist for a correct part number that includes a drawing number.

For this example the drawing number would indicate the flex has the following custom feature:

5" NPT O/E. 5" NPT is smaller than nominal size of flex connector so drawing number is required.

Note: If no drawing number is used and a 3ACI-10-1F1-615.38 part is ordered the connections would both be 6" in size to match the nominal size of the flex.

Rule: ANSI flanges are the default flange for flex and bellows connectors and they default to the nominal size of the flex.

[For further information on quotes, please contact a Product Specialist](#)



Silex: 1-800-387-7818  
Sales/Quote Email: [Silex.Sales@nelsongp.com](mailto:Silex.Sales@nelsongp.com)  
Order Email: [Silex.Orders@nelsongp.com](mailto:Silex.Orders@nelsongp.com)

[silex.com](http://silex.com)

GT Phone: 1-888-894-3726  
Sales/Quote Email: [GTExhaust.Sales@nelsongp.com](mailto:GTExhaust.Sales@nelsongp.com)  
Order Email: [GTExhaust.Orders@nelsongp.com](mailto:GTExhaust.Orders@nelsongp.com)

[gtexhaust.com](http://gtexhaust.com)



## Accessory Part Number Assignments

### Pricing a Custom Flex Connector

#### B. Substituting a Standard engine plate flange for an ANSI flange, one end of a flex connector.

**Problem/Need:** You need to price a flex connector with a standard engine flange one end and an ANSI flange one end but the catalog either does not contain an entry for the standard engine plate flange flex connector you need, or does not have the size flex you need or both are missing.

**To solve:** Most flex connectors with an engine plate flanges one end, are now priced in our catalog (see page #24). If the flex connector you are looking for in the catalog does not have the standard engine flange pattern on one end or the size flex you are looking for, and the engine flange needed is of equal or lesser size to an ANSI flange of the same nominal size, you may use the price of the standard flex connector (ANSI X ANSI) of the same nominal size.

**For example:** You need a 4" flex connector with a 4" caterpillar flange one end and a 4" ANSI flange the other end. This price is not in the catalog. The 4" Caterpillar flange is similar in size to a 4" ANSI flange, if not smaller and it is in the catalog so it would be considered a "standard" engine flange. So you can use the 3ACI-10-1F1-418 price in the catalog. You would still need to request a drawing and correct part number from a Product Specialist but can use this to price your connector.

**Note:** If you need a price on flex with a reducing/increasing flange on one end and an engine plate flange one end, combine what you've learned from both "A" and "B" of this document to get your price. Consult Product Specialist with questions.

#### C. Adding/Subtract length to a flex connector

- Flex connectors that are shorter than standard length will be same price as standard length flex.
- Use flex and tube adders to when adding flex or tube length to flex connector
- For flex connectors that have multiple pieces of flex or tube in part consult factor for pricing

#### D. 100% Stainless steel flex connector

Consult Product Specialist for 100% stainless steel flex connector pricing.

#### E. Plain tube or Plain Pipe ends

**There is no specific pricing for plain tube or plain pipe ends on flex connectors. This is how you would price these plain ends.**

**Example:** You need to price a 4" flex connector that has a 4" I.D. cuff one end and a 4" O.D. tube on the other end, 18" overall length. The part # would be 3ACI-10-44P\*-418. Use the standard price of the equivalent flex connector that contains a 4 in the part number (for more information on flex connector part numbering scheme see part #1 - A). In this case: 3ACI-10-44P-418 = 3ACI-10-44-418 in price. The same holds true in the case of a plain pipe end. 3ACI-10-22P-418 = 3ACI-10-22-418 price.

Other examples:

3ACI-10-2P2P-418 = 3ACI-10-22-418

3ACI-10-2P3-318 = 3ACI-10-23-318

3ACI-10-4P4P-518 = 3ACI-10-44-518

All the preceding are examples of flex connectors that have plain ends, tubing or pipe, and how they are equivalent in price to an I.D. cuff end for plain tube end or a male pipe thread for a plain pipe end. Use rules from Part #2, section C when adding/subtracting length.

\*See Part #1, Section A for more information on connections numbers.

**World Headquarters**  
Stoughton Wisconsin  
United States



1560 Williams Drive  
Stoughton, WI 53589  
Tel: 608-719-1800  
nelsonglobalproducts.com

*GT Exhaust and Silex are divisions of Nelson Global Products*

## Accessory Part Number Assignments

### Pricing a Custom Flex Connector

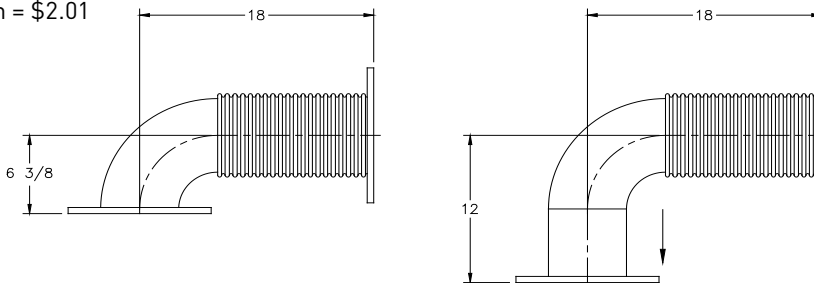
#### F. Adding length to a leg of a flex connector with an elbow.

Pricing flex connectors that have an elbow in the flex piece and one, or both legs need to be extended.

Example:

You need to price a 3ACI-10-1F61F-618 but the leg with no flex needs to be extended from 6.38" (standard dimension) to 12". We need to figure out how much extra tubing we'll need to add into our standard price. To start we'll need the standard flex price:

3ACI-10-1F61F-618 = \$362, 6" tube price per inch = \$2.01



We need to solve for how much extra tube we need to add to the price of our standard flex connector we take the desired leg length and subtract our original leg length.

$$\begin{array}{r}
 12" \text{ (desired leg length)} \\
 - 6.38" \text{ (standard leg length)} \\
 \hline
 5.62" \text{ of extra tubing we need to add to our standard flex price.}
 \end{array}$$

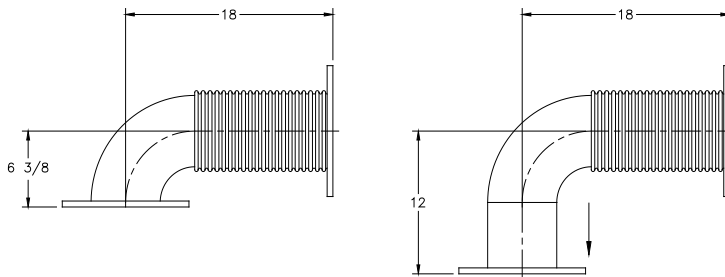
5.62" x \$2.01 = \$11.30 of tubing

$$\begin{array}{r}
 \$362.00 \text{ (Standard 3ACI-10-1F61F-618)} \\
 + \$11.30 \text{ (extra tubing to meet 12" leg length)} \\
 \hline
 \$373.30 \text{ Final price for a 3ACI-10-1F61F-618-xxxxx*}
 \end{array}$$

\*Note: A new drawing number will need to be assigned to the piece if a leg is extended.

#### G. Pricing flex pieces that have a transition in size. (Expansion Cones and Donuts)

When you need one or both ends of a flex connector to step up or down in size by using an expansion cone or a donut in a flex connector.



Consult Product Specialist for drawings and pricing on flex connectors with donuts or expansion cones.



Silex: 1-800-387-7818  
 Sales/Quote Email: [Silex.Sales@nelsongp.com](mailto:Silex.Sales@nelsongp.com)  
 Order Email: [Silex.Orders@nelsongp.com](mailto:Silex.Orders@nelsongp.com)

[silex.com](http://silex.com)

For further information on quotes, please contact a Product Specialist

GT Phone: 1-888-894-3726  
 Sales/Quote Email: [GTExhaust.Sales@nelsongp.com](mailto:GTExhaust.Sales@nelsongp.com)  
 Order Email: [GTExhaust.Orders@nelsongp.com](mailto:GTExhaust.Orders@nelsongp.com)

[gtexhaust.com](http://gtexhaust.com)



# Silex

**INNOVATIONS**

[silex.com](http://silex.com)

Accessory Catalog and Specifications

[gtexhaust.com](http://gtexhaust.com)



**GT**<sup>TM</sup>  
**EXHAUST**

For further information on quotes, please contact a Product Specialist  
Tel: 608-719-1800 | email: [gtexhaust.orders@nelsongp.com](mailto:gtexhaust.orders@nelsongp.com)