



ML SERIES

RECIPROCATING AIR COMPRESSORS



**MASTERLINE PRESSURE
LUBRICATED AIR COMPRESSORS
5-30HP**



**SOME COMPANIES ARE FOUNDED ON HARD WORK.
OTHERS ARE FOUNDED ON IDEALS.**

FS-CURTIS WAS FOUNDED ON BOTH.

A HISTORY OF

1854

Curtis & Co. –
Empire Saw founded
in St. Louis, MO, USA

1857

Earned Agricultural
and Mechanical Fair
award for excellence
and quality

1876

Named Curtis
and Co.
Manufacturing

1897

Built first
reciprocating
air compressor
that later evolved
into the Master
Line Series

1914

Supported U.S.
Government efforts
by producing more
than 2 million Howitzer
shell forgings

1940

Designed and
developed
mobile oxygen
compressors to be
used in Aerospace
applications

1955

Merged with U.S.
Air Compressor
Company, Central
Petroleum Company,
Lewis Machine
Company



REAL-WORLD PEOPLE

When you're successful, we're successful.
That's why FS-Curtis listens.

Trust and dependability are the foundations of our past
and the fabric of our future, so you can count on being
treated with the personal touch you deserve.

More than 150 years ago, the FS-Curtis way of doing business was established through two key commitments: a dedication to building quality products and a dedication to responsive customer service.

Over the decades, the company and its products have evolved through innovation and new technologies. But those commitments to quality and service remain unchanged. Today, just as in 1854, FS-Curtis customers can depend on our products for reliable, long-term service. Equally as important, they can depend on getting the same from our people.

EXCELLENCE

1976

Merged with Toledo Tools as Curtis-Toledo Inc.

1979

Introduction of Challenge Air Series reciprocating air compressors

1995

Began manufacturing and assembling Rotary Screw compressors

2005

Expanded global market reach by joining forces with Fusheng Industrial

2006

U.S. Headquarters certified as ISO9001:2000 and ISO14001:2004

2010

Introduced next generation GSV Variable Speed Rotary Screw compressors



REAL-WORLD PRODUCTS

Take more than a century of experience building quality compressors, add in a staff that's listening to the needs of the market, and the result is a product lineup that's built for tough working conditions. No wonder so many customers around the world depend on FS-Curtis compressors day in and day out.

SETTING THE NEW STANDARD

HEAVY-DUTY PERFORMANCE

Masterline is the most robust, heavy-duty reciprocating air compressor lineup available. The perfect combination of quality components and efficient design make the ML Series rugged, affordable and smart. Because every model is built tough to last a lifetime in demanding working conditions, the ML Series is an outstanding alternative to splash-lubricated reciprocating compressors and small rotary compressors. Choose higher quality. Choose superior durability. Choose ML Series pressure lubricated air compressors.



Masterline is the most robust, heavy-duty reciprocating air compressor lineup available.



ML SERIES FEATURES AT A GLANCE

CENTRO-RING PRESSURE LUBRICATION

Patented FS-Curtis design.

- Proprietary technology is an FS-Curtis exclusive
- Supplies pressurized oil internally to all bearings and critical wear surfaces through the rifle-drilled crankshaft and connecting rods
- Helps ensure maximum uptime and increase service life

100% CAST-IRON CYLINDERS, CYLINDER HEADS, CONNECTING RODS, AND CRANKSHAFT

All cast-iron where it counts for longer life with less maintenance.

- Some pumps claim 100% cast-iron yet still have aluminum cylinders, cylinder heads, connecting rods and crankshafts — not FS-Curtis
- Ductile cast-iron crankshaft and connecting rods are stronger, more corrosion-resistant and less likely to break
- Slow-turning pump increases pump life
- Rugged parts and construction for industrial performance

QUALITY COMPONENTS

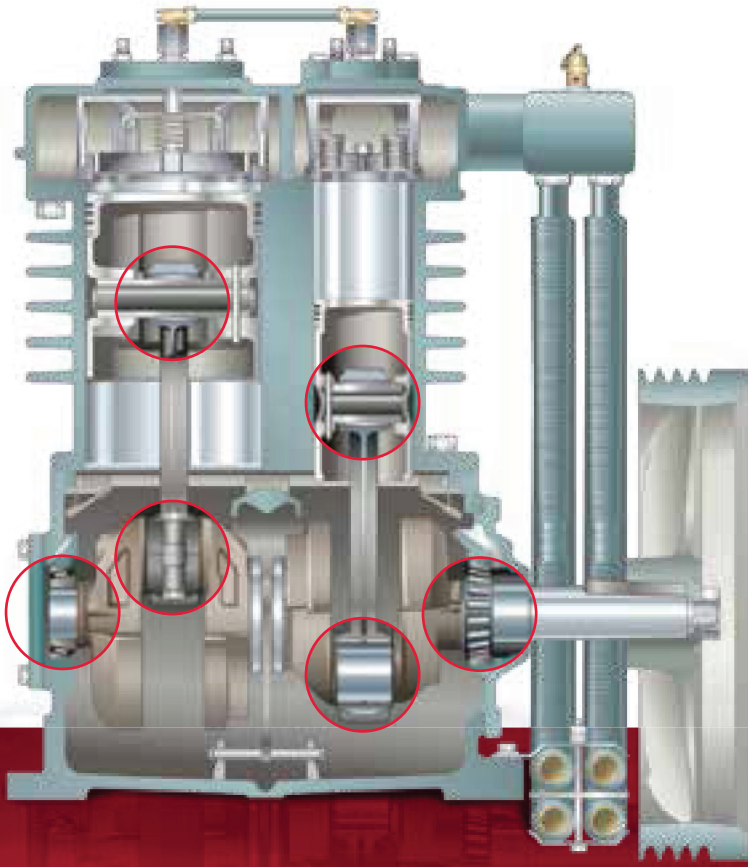
Built for 100% continuous duty.

- Industry-leading stainless-steel valve assemblies for increased airflow and reliability
- Oversized tapered main roller bearings to ensure long life
- Premium finned intercooler maximizes heat dissipation
- Metal intake filter/silencer is superior to plastic
- Heavy-duty stamped-steel belt guard
- Suction valve head unloaders for continuous running air compressors



AMERICAN CRAFTSMANSHIP
ST. LOUIS, MO USA

Choose higher quality. Choose superior durability. Choose ML Series pressure-lubricated air compressors.



SUPERIOR CENTRO-RING PRESSURE LUBRICATION TO ALL CRITICAL WEAR POINTS FOR EXTENDED LIFE SERVICE.

LONG-TERM RELIABILITY

ML Series compressors feature FS-Curtis' patented Centro-Ring lubrication for extended service life. This unique pressure-lubrication system ensures that oil is delivered directly to all critical wear points and bearings, including the crankshaft, connecting rod, and wrist pins. The cast-iron design further ensures that you'll get the performance and durability you desire without the repair and maintenance bills you don't.

THE CENTRO-RING PRESSURE LUBRICATION ADVANTAGE

When you need continuous duty, the ML Series delivers. Only FS-Curtis offers the unique Centro-Ring lubrication system that extends the life of the compressor. Centro-Ring lubrication is superior to splash-lubricated systems because it supplies pressurized oil internally to all bearings and critical wear surfaces through the rifle-drilled crankshaft and connecting rods, ensuring that all critical components are properly lubricated. That means an air compressor with Centro-Ring lubrication will last significantly longer than a similar splash-lubricated compressor. It's just another reason why the FS-Curtis ML Series is the most trusted and dependable line available.

THE PERFECT ALTERNATIVE TO SMALL ROTARY AIR COMPRESSORS

Unlike rotary screw air compressors, ML Series models can run intermittently AND 100% continuous duty. They're an ideal alternative to rotary screw air compressors in environments where a constant load isn't needed. By design, rotary screw air compressors are intended to run 100% loaded, and when they don't, moisture can build up and cause a catastrophic failure. There's no such worry with ML Series compressors. Plus, ML Series compressors can handle more rugged, hot or dirty ambient conditions that can put a rotary screw air compressor at risk of failure and expensive repairs.

THE CONFIGURATION YOU NEED

ML Series compressors aren't just durable. They're also versatile, with a wide range of available configurations. No matter what your application, there's a Masterline compressor just right for your needs. Be sure to speak with your FS-Curtis distributor to learn about the many Masterline options available to you.



SIMPLEX

Simplex compressors are well suited for common applications where only one compressor is needed.

- Magnetic motor starter
- Manual tank drain
- Oil sight glass
- Horizontal or vertical tank configurations available
- Factory oil filled

DUPLEX

Duplex compressors are ideal when there are varying demand levels during operation. By alternating demand across two pumps, a duplex compressor also delivers longer pump life. The redundant pumps ensure you'll always have air, eliminating maintenance downtime.

- Alternator control panel comes mounted with magnetic motor starters and thermal overload protection
- Compressors alternate during normal operation
- Both compressors run when system demands
- Duplex design reduces electrical cost and eliminates downtime
- Factory oil filled



ULTRA PACK

The ultimate value, an FS-Curtis Ultra Pack gives you a Masterline Simplex or Duplex compressor fully packaged with the most common options and accessories. You'll save money and time by getting it all in one package, and you'll be assured of increasing air quality while reducing maintenance needs. Industry-leading five year bumper-to-bumper warranty available — talk to your FS-Curtis representative for more details.

- Air-cooled aftercooler
- Magnetic motor starter (Simplex)
- Alternator panel (Duplex)
- Dual control (10-30HP Simplex)
- Low oil level shutdown
- Automatic tank drain
- Tank isolator pads
- Factory oil filled



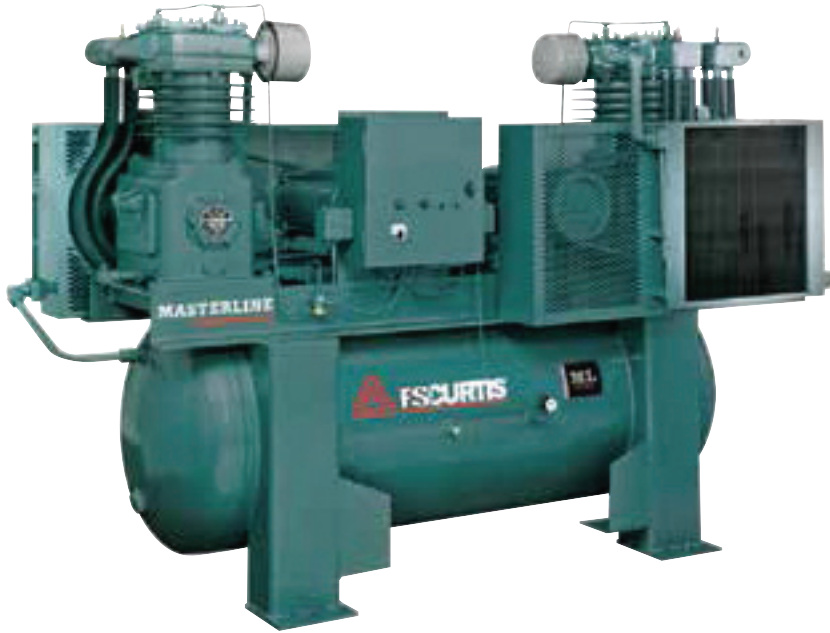
TECHNICAL DATA

STANDARD FEATURES	STANDARD (Simplex/Duplex)	ULTRA PACK (Simplex/Duplex)
Patented Centro-Ring pressure lubrication system	•	•
100% cast-iron—Cylinders, cylinder heads, connecting rods	•	•
Factory oil filled	•	•
Magnetic motor starter (Simplex)	•	•
Alternator control panel complete with magnetic starters (Duplex)	•	•
NEMA-designed electric motor	•	•
Automatic start/stop controls	•	•
ASME-approved air receiver	•	•
Manual condensate tank drain valve	•	•
Dial read-out pressure gauge	•	•
U.L. -approved pressure switch	•	•
ASME-approved safety valve	•	•
ASME-approved discharge valve	•	•
Metal intake filter/silencers	•	•
Dynamically balanced flywheel	•	•
OSHA-approved totally enclosed metal belt guard	•	•
Dual control (10-30HP Simplex)	o	•
Air-cooled aftercooler	o	•
Low oil level shutdown	o	•
Automatic tank drain	o	•
Tank isolator pads	o	•

o Optional Feature • Standard Feature ■ Ultra Pack Features

ULTRA PACK DELIVERS

There's no better compressor value than an FS-Curtis Ultra Pack. As you can see, you'll get every top-quality FS-Curtis feature. Plus, only Ultra Pack purchases come with a 5-year "bumper-to-bumper" warranty.



No matter where you look, the FS-Curtis commitment to quality stands out. From the patented Centro-Ring lubrication to cast-iron components, it's easy to see why the ML Series outlasts others in its class.

ELECTRIC MODELS

MODELS	HP	PUMP	CFM (@175psi)	CONFIGURATION	STANDARD PACKAGE			ULTRA PACK*		
					TANK (Gal.)	DIMENSIONS (LxWxH-In.)	WEIGHT (Lbs.)	TANK (Gal.)	DIMENSIONS (LxWxH-In.)	WEIGHT (Lbs.)
ML5	5	D96	19.1 Simplex	Horizontal	80	64 x 23 x 53	550	80	64 x 31 x 54	625
			38.2 Duplex	Vertical		36 x 25 x 76			39 x 36 x 76	
ML7.5	7.5	C79	28.7 Simplex	Horizontal	80	74 x 28 x 56	1300	120	80 x 31 x 58	1450
			57.4 Duplex	Vertical		36 x 25 x 76			39 x 36 x 76	
ML10	10	D97	39.8 Simplex	Horizontal	120	74 x 28 x 56	1055	120	73 x 36 x 57	1141
			79.6 Duplex			84 x 34 x 66			2600	
ML15	15	C89	49.5 Simplex		120	72 x 28 x 58	1075	120	73 x 36 x 57	1161
ML15+	15		55.8 Simplex		120	72 x 28 x 58	1075	-	-	-
ML20	20	C89	111.6 Duplex		200	84 x 34 x 66	2700	200	90 x 37 x 64	2870
			65.1 Simplex		120	72 x 28 x 58	1095	-	-	-
ML20+	20	C98	76.5 Simplex		200	74 x 43 x 74	2200	200	75 x 51 x 74	2315
			153 Duplex		240	87 x 52 x 74	3500	240	93 x 55 x 74	3625
ML25	25	C98	91.4 Simplex		200	74 x 43 x 74	2300	200	75 x 51 x 74	2415
			182.8 Duplex		240	87 x 52 x 74	3750	240	93 x 55 x 74	3975
ML30	30	C98	102.2 Simplex	200	74 x 43 x 74	2350	200	75 x 51 x 74	2465	
			204.4 Duplex	240	87 x 52 x 74	3850	240	93 x 55 x 74	4075	

*View features chart for Ultra Pack features.

THE IDEAL CHOICE

SUPERIOR CONSTRUCTION FOR DEMANDING ENVIRONMENTS.

Every FS-Curtis compressor is manufactured for heavy-duty, durable, long-term service, even in harsh conditions. From the superior cast-iron build to best-in-class features, you can count on FS-Curtis to deliver quality and performance.



STANDARD



PREMIUM



ELITE

Overview	Industry-leading entry level features	Robust construction and enhanced features for demanding applications	The most rugged reciprocating compressor on the market
Horsepower (HP)	5-10HP	5-15HP	5-30HP
Lubrication Technology	Splash	Splash	Pressure
Recommended Use	Intermittent	Intermittent and Continuous Run	Intermittent and Continuous Run
Applications	Light Industrial, DIY, Commercial, Automotive	Light Industrial, Industrial, Commercial, Automotive	Light Industrial, Industrial, Commercial, Heavy-Use Automotive
Ultra Pack Available	No	Yes	Yes
Warranty	Standard 12-Month Factory Warranty; 2-Year Extended Available	Standard 12-Month Factory Warranty; 5-Year Extended or 5-Year Bumper-To-Bumper with Ultra Pack Available	Standard 12-Month Factory Warranty; 5-Year Extended or 5-Year Bumper-To-Bumper with Ultra Pack Available

THERE'S AN FS-CURTIS COMPRESSOR THAT IS RIGHT FOR EVERY NEED!

Work with your FS-Curtis distributor to select from a full range of rotary and reciprocating compressors as well as air treatment products to best meet your application.



EASY TO WORK WITH

Just as you get personal attention from FS-Curtis when selecting equipment, you're also supported worldwide by great people. You can count on the global FS-Curtis staff and representatives to listen to your needs and work with you to develop the solution that's best for your situation. Our people are committed to serving you well and FS-Curtis provides extensive training in the field and at our St. Louis headquarters to ensure that you have the support you need.

In addition, authorized FS-Curtis distributors use genuine FS-Curtis parts, lubricants and filter kits to maximize the service life of your equipment. And with a nationwide network of service centers, you don't need to worry about added downtime waiting for parts.

QUALITY PARTS MATTER

At FS-Curtis, quality is never compromised. That's why we control production using ISO 9001:2008 and ISO 14001:2004 standards, and it's also why we maintain a large inventory of replacement parts.

Using only genuine FS-Curtis replacement parts not only helps ensure continued reliable service of your equipment, but the large inventory also helps keep parts affordable and available. We're dedicated to maximizing your productivity, and that includes maximizing your uptime.

Through the dependability of our people and our quality-focused manufacturing, FS-Curtis will continue to be a trusted name serving even more markets through our ever-growing global presence.