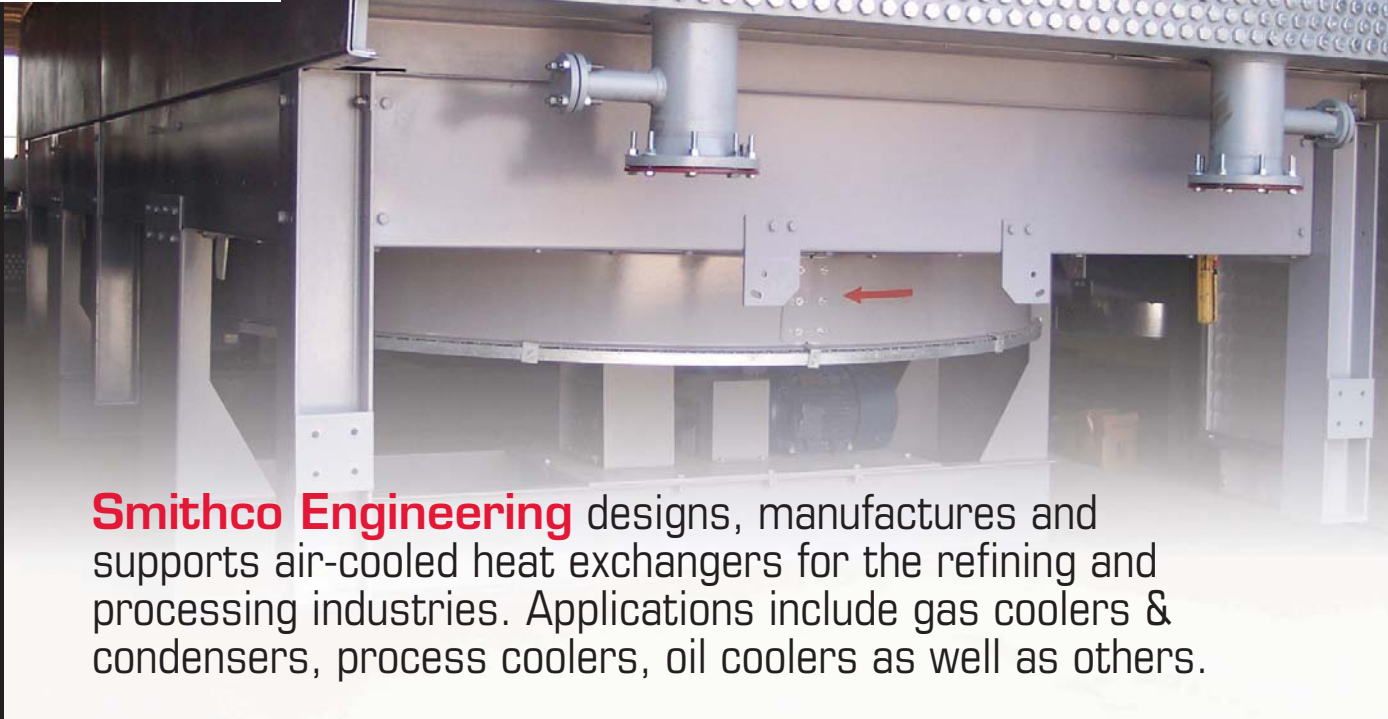




**THERMAL
PRODUCTS** INC.
Engineered Solutions To
Industrial Applications

REFINING & PROCESSING

6312 S. 39th West Avenue • Tulsa, Oklahoma 74132 • Phone: 918.446.4406 • Fax: 918.445.2857 • www.smithco-eng.com • email: info@smithco-eng.com



Smithco Engineering designs, manufactures and supports air-cooled heat exchangers for the refining and processing industries. Applications include gas coolers & condensers, process coolers, oil coolers as well as others.

For a quote or more information about our design and manufacturing capabilities, please contact your local Smithco Engineering sales representative or email us at info@smithco-eng.com.



Key Features:

- Custom thermal and mechanical designs
- Rugged construction from heavy gauge steel for equipment longevity
- Outline drawings available with quote
- Various materials of construction available – Carbon and Low Alloy Steels, Stainless Steel, Duplex as well as other Alloy Materials
- Cooling sections from 3' to 60' long
- Galvanized structural finish and metallized headers standard, suitable for off-shore applications and other harsh environments
- Low noise designs available
- Induced and forced draft designs

Optional Auxiliary Components:

- Louvers (manual or automatic)
- Warm air recirculation system
- Steam coil
- Walkways and maintenance platforms
- Project and/or customer specific requirements

Maintenance & Support:

- Customer support during critical maintenance schedules
- Replacement finned tubes
- Replacement bundles
- Mechanical components
- Technical field service support





6312 S. 39th West Avenue • Tulsa, Oklahoma 74132 • Phone: 918.446.4406 • Fax: 918.445.2857 • www.smithco-eng.com • email: info@smithco-eng.com



Smithco's Amercool Division designs, manufactures and supports air-cooled heat exchangers for the gas compression industry. Applications include gas coolers & condensers, engine coolers, process coolers, oil coolers as well as others.

For a quote or more information about our design and manufacturing capabilities, please contact your local Smithco Engineering sales representative or email us at info@smithco-eng.com.



Features of Amercool Coolers:

- Heavy duty "Oil Field" construction
- Header construction per ASME Code 150—11,150 psig design pressure
- Rugged construction from heavy gauge steel for equipment longevity
- Galvanized finish standard—suitable for off-shore applications and other harsh environments
- Heavy duty tapered roller bearings
- Shoulder-type access plugs for ease of maintenance
- Low noise, high efficiency fans
- Extensive experience in rating coolers for gas compression packages
- Custom engineered and built
- Outline drawings available with quote

Configurations Available:

- VCI Models: 48" – 168" (vertical, engine driven, induced draft)
- VCF Models: 48" – 168" (vertical, engine driven, forced draft)
- ST Models: 30" – 60" (vertical, motor driven, forced/induced draft)
- HF Models: horizontal coils, vertical fans, engine driven, forced draft, up to 60' long sections
- Horizontal (electric motor drive, forced/induced draft, up to 60' long sections)

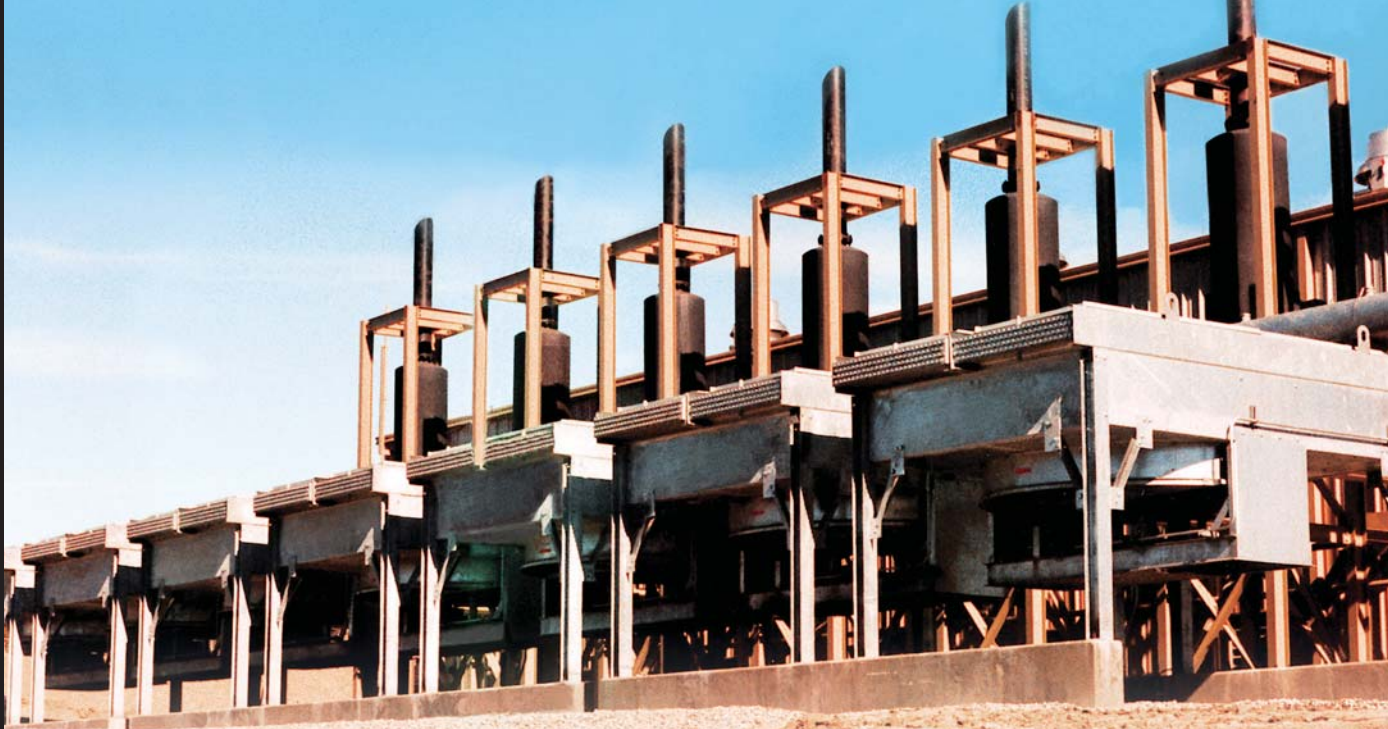
Maintenance & Support:

- Customer support during critical maintenance schedules
- Replacement finned tubes
- Replacement bundles
- Mechanical components
- Technical field service support





6312 S. 39th West Avenue • Tulsa, Oklahoma 74132 • Phone: 918.446.4406 • Fax: 918.445.2857 • www.smithco-eng.com • email: info@smithco-eng.com



Smithco's Amercool Division designs, manufactures and supports air-cooled heat exchangers for the power generation industry. Applications include radiators, generator sets, landfill gas cooling as well as others.

For a quote or more information about our design and manufacturing capabilities, please contact your local Smithco Engineering sales representative or email us at info@smithco-eng.com.



Features of Amercool Coolers:

- Rugged construction from heavy gauge steel for equipment longevity
- Galvanized finish standard—suitable for off-shore applications and other harsh environments
- Low noise designs available
- Outline drawings available with quote
- Cooling sections from 3' to 60' long
- Round finned tubes 5/8" to 1 1/4"
- Low pressure drop design
- Various materials of construction available including 304, 316 stainless
- Surge tanks available

Configurations Available:

- Horizontal (electric motor drive, forced/induced draft, up to 60' long sections)
- VCI Models: 48" – 168" (vertical, engine driven, induced draft)
- ST Models: 30" – 60" (vertical, motor driven, forced/induced draft)
- HF Models: horizontal coils, vertical fans, engine driven, forced draft, up to 60' long sections

Maintenance & Support:

- Customer support during critical maintenance schedules
- Replacement finned tubes
- Replacement bundles
- Mechanical components
- Technical field service support



CORPORATE PROFILE

Profile:

Ownership:	Privately Owned Company
Products:	Air-Cooled Heat Exchangers
Sales Representation:	Most Major U.S. Cities, Eastern & Western Canada, Mexico, Pacific Rim, Middle East, Trinidad & Tobago and United Kingdom (Refer to www.smithco-eng.com for rep list)
Office/Mailing Address:	6312 South 39th West Avenue Tulsa, OK 74132
Telephone:	918.446.4406
Fax:	918.445.2857
E-mail:	info@smithco-eng.com

Key Personnel:

Scott Edwards	Vice President & General Manager	Tom Montgomery	Parts & Service Manager
Kendal Barber	Sales & Engineering Manager	Lloyd Hursh	Director of Manufacturing
Emily Snyder	Controller	Jo Admire	Safety Director
Matt Fadenrecht	Quality Control	Jim Matthews	Sales

Qualifications:

Engineering:	Complete thermal, hydraulic, and mechanical design of air-cooled heat exchangers and atmospheric sections
Materials of Construction:	Carbon Steel, Stainless Steel, Monel™, Copper-Nickel, Duplex, Incoloy®, Titanium, and Hastelloy®
Codes and Standards of Construction:	ASME, Section VIII, Division I; TEMA R-B-C; API 661; AISC; AWS
Non-Destructive Examination:	By Smithco: Magnetic Particle Examination, Dye Penetrant Examination, Brinnell Hardness Tests Subcontracted at Smithco Facilities: Radiography, Ultrasonic Testing Subcontracted: All Physical Testing
ASME Code Inspections:	OneCIS Insurance Company A Bureau Veritas Company



Please contact your Smithco Engineering sales representative for quotes or for more information.

* All trademarks and registered trademarks are the property of their respective owners.

RECENT INSTALLATIONS - GENERAL

Year	Company	Locations	Service
2015	AOT Pipeline	Mexico	Interstage Gas Cooler
2014	Arizona LNG	Arizona	Hot Oil Trim Cooler
2013	Aschem Petrochemical	Turkey	Glycol Cooler
2012	Cameron LNG	Louisiana	Refrigerant Cooler
2012	Chevron	Alabama	Sweet Gas Overhead Cooler
2015	Citgo Petroleum	Louisiana	Blowdown Vapor Cooler
2014	Clariant Corporation	Texas	Reactor Cooler
2014	Corval Constructors	Minnesota	Dry Cooler
2012	Cummins Power Generation	Pennsylvania	Power Generation Engine Cooler
2011	EP Petroecuador	Ecuador	Jacket Water Cooler
2012	Frontier Refining	Wyoming	Heavy Naptha Cooler
2012	Genesis Solar	California	Product Cooler
2012	Groupement Berkine	Algeria	Hydrocarbon Gas Injection Cooler
2012	Holly Refining	Oklahoma	Diesel Product Cooler
2015	Husky Oil Operations	Alberta	Glycol Aerial Cooler
2010	John Zink	Oklahoma	Service Liquid Cooler
2014	Juniper GTL	Louisiana	Reformed Gas Cooler
2012	LFG Specialties	Florida	Landfill Gas Cooler
2015	Northern Tier Energy	Minnesota	Preflash Overhead Condenser
2012	Patten Power Systems	Illinois	Power Generation Engine Cooler
2013	Phillips 66	Louisiana	Gas Oil Air Cooler
2011	Suncor Energy	Canada	Pretreater Effluent Cooler
2012	Tecna South America	Brazil	Debutanizer Condenser
2012	Tesoro Hawaii	Hawaii	Crude Tower Overhead Condenser
2013	Toray Plastics	Rhode Island	Water Cooler
2012	TMF Biofuels	Oregon	Power Generation Engine Cooler
2015	Valero Refining	Louisiana	Diesel Product Cooler
2011	Western Energy Systems	Alaska	Power Generation Engine Cooler



SMITHCO

Please contact your Smithco Engineering sales representative for quotes or for more information.

ENGINEERING & CONSTRUCTION INSTALLATIONS

Year	Company	Locations	Service
2011	Audubon Engineering	Texas	NGL Product Cooler
2012	BCKK Engineering	Texas	Inlet Compressor Discharge Cooler
2013	Burns & McDonnell	Oklahoma	Heavy Platformate Cooler
2011	Holloman Engineering	Texas	Refrigerant Condenser
2013	Jacobs Engineering	Texas	Product Cooler
2011	John Zink	Texas	Gas Cooler
2014	Linde Engineering	Peru	Naptha Cooler
2014	Optimized Process Design	North Dakota	Refrigerant Condenser
2015	Saulsbury Engineering	Oklahoma	Interstage Cooler
2012	Thermo Design Engineering	Canada	Steam Condenser
2012	Ventech Engineers	Yemen	Naptha Cooler
2011	Willbros Engineering	Texas	Gas Aftercooler

GAS PROCESSING, TRANSMISSION & COMPRESSION INSTALLATIONS

Year	Company	Locations	Service
2014	AG Equipment	Oklahoma	Antifreeze Cooler
2013	Atlas Copco	Algeria	Lube Oil Cooler
2012	Compressor Systems	Texas	Vertical Compressor Cooler
2014	Enerflex Energy Systems	Texas	Propane Condenser
2015	GEA Refrigeration	Oklahoma	Lube Oil Cooler
2011	Harmattan Gas Processing	Canada	Propane Condenser
2011	Kinder Morgan	Wyoming	Depropanizer
2013	Kobelco Compressors	Alberta	Glycol Cooler
2011	Southern California Gas	California	Natural Gas Compression Cooler
2013	Sundyne Corporation	Australia	Lube Oil Cooler
2011	Texas Eastern Transmission	Pennsylvania	Natural Gas Cooler
2014	Tryer Process Equipment	Texas	Lean Amine Cooler
2015	UOP Russell	Oklahoma	Lean Amine Cooler
2013	Williams Energy Canada	Alberta	Feed Gas Comp. Discharge Cooler



SMITHCO

Please contact your Smithco Engineering sales representative for quotes or for more information.

MAJOR SUBCONTRACTORS

MATERIALS

Subvendor	Material	Location
Webco	Tubes (C.S.)	Sand Springs, OK
Tubes, Inc.	Tubes (Import C.S., S.S., & Alloys)	Sand Springs, OK
Port City Plate/Metals USA	Plate (C.S. & C.S. with HIC testing)	Tulsa, OK
Metals, Inc.	Plate (S.S. & Alloys)	Tulsa, OK
Mattsco Supply	Flanges, Pipes, Fittings	Tulsa, OK

COMPONENTS

Subvendor	Component	Location
Reliance Baldor ABB	Motors	Tulsa, OK
Cofimco	Fans	Houston, TX
The Unlaub Co.	Drive Components (Dayco, Dodge)	Tulsa, OK
Airtech Products, Inc.	Louvers	Sand Springs, OK
Frank W. Murphy Mfg.	Vibration Switches	Tulsa, OK

FABRICATION ACTIVITIES

Subvendor	Fabrication	Location
Metal Services Inc.	Structural Fabrication & Assembly	Tulsa, OK
Professional Fabricators, Inc.	Nozzle Assembly Welding	Tulsa, OK
American Piping Inspections	RT	Tulsa, OK
Precision Heat Treating	PWHT	Tulsa, OK
Superior Sandblasting	Sandblasting, Painting & Zinc Metalizing	Sand Springs, OK
AZZ Galvanizing Services	Hot Dip Galvanizing	Chelsea, OK

SHIPPING

Truck	A Choice of Major Contract Freight Firms is Available	
	Width:	18' – 20' Surrounding States
	Length:	60'
	Weight:	Pre-assembled Units up to 30 Tons
Rail	Missouri-Pacific Spur into Facilities	
Water	Port of Catoosa (Barge to the Mississippi River)	
Air	Tulsa International Airport	



SMITHCO

Please contact your Smithco Engineering sales representative for quotes or for more information.